






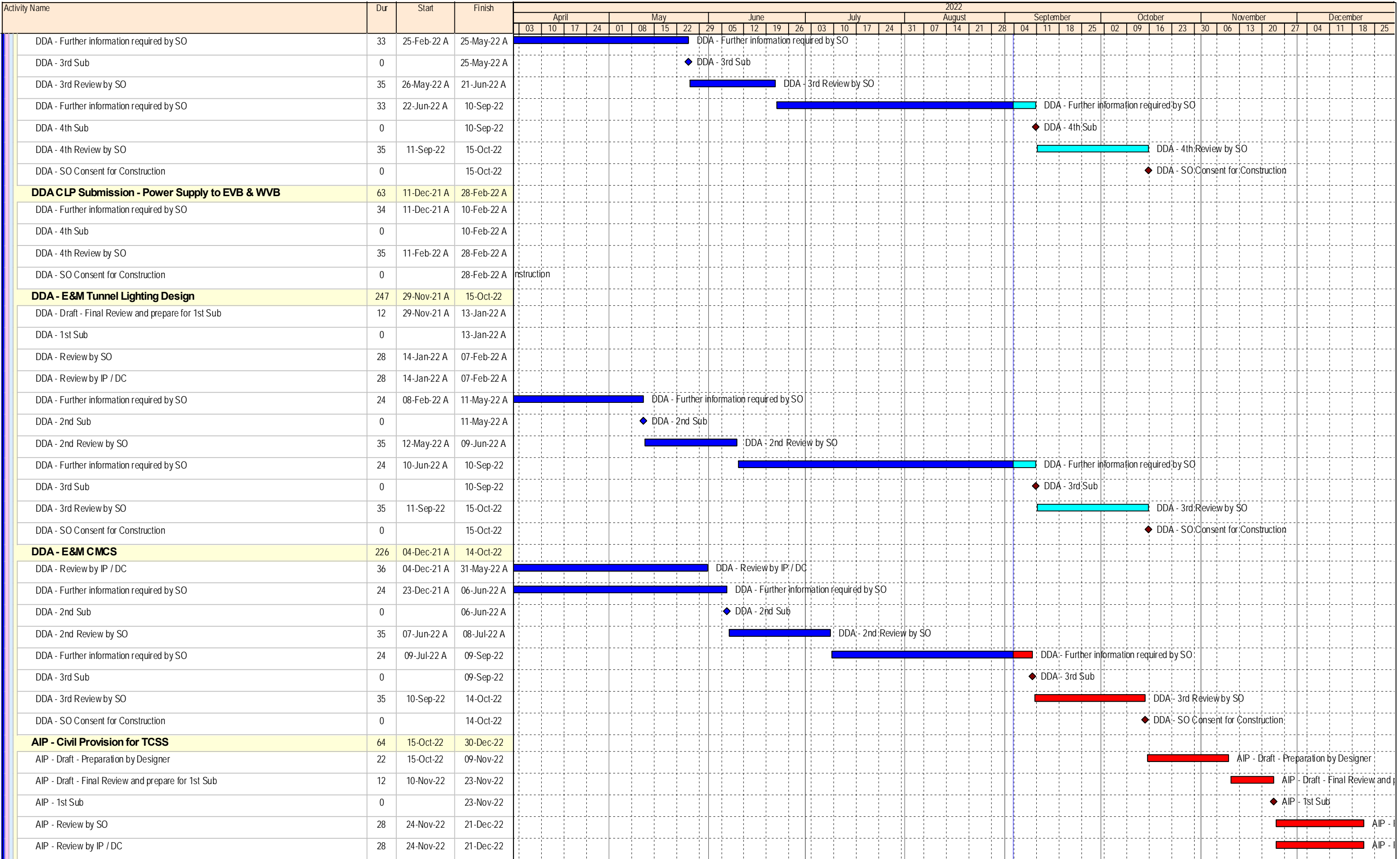
-  Milestone
-  Planned Bar
-  Critical Activity
-  Actual Milestone
-  Actual Work

ED/2018/04 Trunk Road T2 and Infrastructure Works for Developments at South Apron

Three Months Rolling Programme (Aug-22)



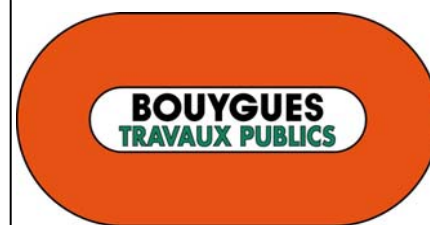
Date	Revision	Checked	Approved
18-Dec-19	00V1	WYu	
22-Feb-20	01V0	SPa/LLo	WYu
09-Apr-20	01V1	SPa/LLo	WYu
17-Jul-20	01V2	SPa/LLo	WYu
09-Oct-20	01V3	SPa/LLo	WYu
02-Jul-21	02V0	SPa/LLo	WYu



- ◆ Milestone
- Planned Bar
- Critical Activity
- ◆ Actual Milestone
- Actual Work

ED/2018/04 Trunk Road T2 and Infrastructure Works for Developments at South Apron

Three Months Rolling Programme (Aug-22)



Date	Revision	Checked	Approved
18-Dec-19	00V1	WYu	
22-Feb-20	01V0	SPa/LLo	WYu
09-Apr-20	01V1	SPa/LLo	WYu
17-Jul-20	01V2	SPa/LLo	WYu
09-Oct-20	01V3	SPa/LLo	WYu
02-Jul-21	02V0	SPa/LLo	WYu

Activity Name	Dur	Start	Finish	2022																																															
				April				May				June				July				August				September				October				November				December															
				03	10	17	24	01	08	15	22	29	05	12	19	26	03	10	17	24	31	07	14	21	28	04	11	18	25	02	09	16	23	30	06	13	20	27	04	11	18	25									
CUE L10(N) Watermain (100m, 30m/wk)	40	30-May-22 A	05-Jul-22 A	CUE L10(N) Watermain (100m, 30m/wk)																																															
Entrance	188	28-Dec-21 A	17-Aug-22 A																																																
Structure	30	28-Dec-21 A	11-Apr-22 A																																																
Entrance - Waterproofing, Backfill & Remove S1	9	28-Dec-21 A	07-Jan-22 A																																																
Entrance - Structure (Wall & Top Slab)	15	08-Jan-22 A	25-Jan-22 A																																																
Entrance - Strength & Falsework dismantle	6	26-Jan-22 A	11-Apr-22 A	Entrance - Strength & Falsework dismantle																																															
BS/E&M	72	11-Apr-22 A	17-Aug-22 A																																																
Entrance - E&M Installation	72	11-Apr-22 A	17-Aug-22 A	Entrance - E&M Installation																																															
Junction	194	28-Dec-21 A	23-Jul-22 A																																																
Structure	147	28-Dec-21 A	17-May-22 A																																																
Junction - Structure (Wall & Top Slab)	12	28-Dec-21 A	19-Apr-22 A	Junction - Structure (Wall & Top Slab)																																															
Junction - Waterproofing, Backfill & Remove S2	9	20-Apr-22 A	30-Apr-22 A	Junction - Waterproofing, Backfill & Remove S2																																															
Junction - Waterproofing, Backfill & Remove S1	9	30-Apr-22 A	10-May-22 A	Junction - Waterproofing, Backfill & Remove S1																																															
Junction - Strength & Falsework dismantle	6	11-May-22 A	17-May-22 A	Junction - Strength & Falsework dismantle																																															
BS/E&M	45	24-May-22 A	23-Jul-22 A																																																
Junction - E&M 1st Fix Installation	18	24-May-22 A	14-Jun-22 A	Junction - E&M 1st Fix Installation																																															
Junction - E&M Installation	24	15-Jun-22 A	12-Jul-22 A	Junction - E&M Installation																																															
Junction - Backfill	12	12-Jul-22 A	23-Jul-22 A	Junction - Backfill																																															
S20 (Section 6A)	708	21-Oct-21 A	11-Mar-24																																																
Future Carriageway - Stage 3	289	21-Oct-21 A	27-Aug-22 A																																																
S20 Stage 3 (Drainage & Watermain near CUE)	30	21-Oct-21 A	20-May-22 A	S20 Stage 3 (Drainage & Watermain near CUE)																																															
S20 Stage 3 (Catchpit, Gully)	24	24-May-22 A	21-Jun-22 A	S20 Stage 3 (Catchpit, Gully)																																															
S20 Stage 3 (Watermain)	36	22-Jun-22 A	30-Jul-22 A	S20 Stage 3 (Watermain)																																															
S20 Stage 3 (Roadworks)	24	01-Aug-22 A	27-Aug-22 A	S20 Stage 3 (Roadworks)																																															
Future Amenity Area (Gas Station Side)	331	21-Oct-21 A	30-Nov-22																																																
Gas Station Side (Gully & Planter)	36	21-Oct-21 A	07-Jan-22 A																																																
S20 Stage 2 (Roadworks) (Gas Station Side)	24	05-Sep-22	05-Oct-22	S20 Stage 2 (Roadworks) (Gas Station Side)																																															
Gas Station Side (Landscape)	48	06-Oct-22	30-Nov-22	Gas Station Side (Landscape)																																															
Future Footpath	650	18-Mar-22 A	11-Mar-24																																																
Watermain diversion (Part 1 - CKR side)	24	18-Mar-22 A	06-Aug-22 A	Watermain diversion (Part 1 - CKR side)																																															
Watermain diversion (Part 2 - AMAWBC side)	24	03-Apr-22 A	04-Jun-22 A	Watermain diversion (Part 2 - AMAWBC side)																																															
CLP 11kV diversion (Part 2 - AMAWBC side)	24	06-Jun-22 A	20-Jul-22 A	CLP 11kV diversion (Part 2 - AMAWBC side)																																															
Utilities undertaker for AMAWBC (Part 1 - CKR side)	24	21-Jul-22 A	07-Aug-22 A	Utilities undertaker for AMAWBC (Part 1 - CKR side)																																															
Utilities undertaker for AMAWBC (Part 2 - AMAWBC side)	24	08-Aug-22 A	20-Aug-22 A	Utilities undertaker for AMAWBC (Part 2 - AMAWBC side)																																															
Footpath / U channel / planter (Part 1 - CKR side)	36	22-Aug-22 A	05-Oct-22	Footpath / U channel / planter (Part 1 - CKR side)																																															
Footpath / U channel / planter (Part 2 - AMAWBC side)	36	05-Sep-22	19-Oct-22	Footpath / U channel / planter (Part 2 - AMAWBC side)																																															
Landscape softwork (Part 1 - CKR side)	48	06-Oct-22	30-Nov-22	Landscape softwork (Part 1 - CKR side)																																															
Landscape softwork (Part 2 - AMAWBC side)	48	20-Oct-22	14-Dec-22	Landscape softwork (Part 2 - AMAWBC side)																																															
Section 9A Completion	0		14-Dec-22	◆ Section 9A Completion																																															
Section 6A Completion	0		14-Dec-22	◆ Section 6A Completion																																															
Road S20 - Establishment Period	365	15-Dec-22	11-Mar-24	Road S20 - Establishment Period																																															

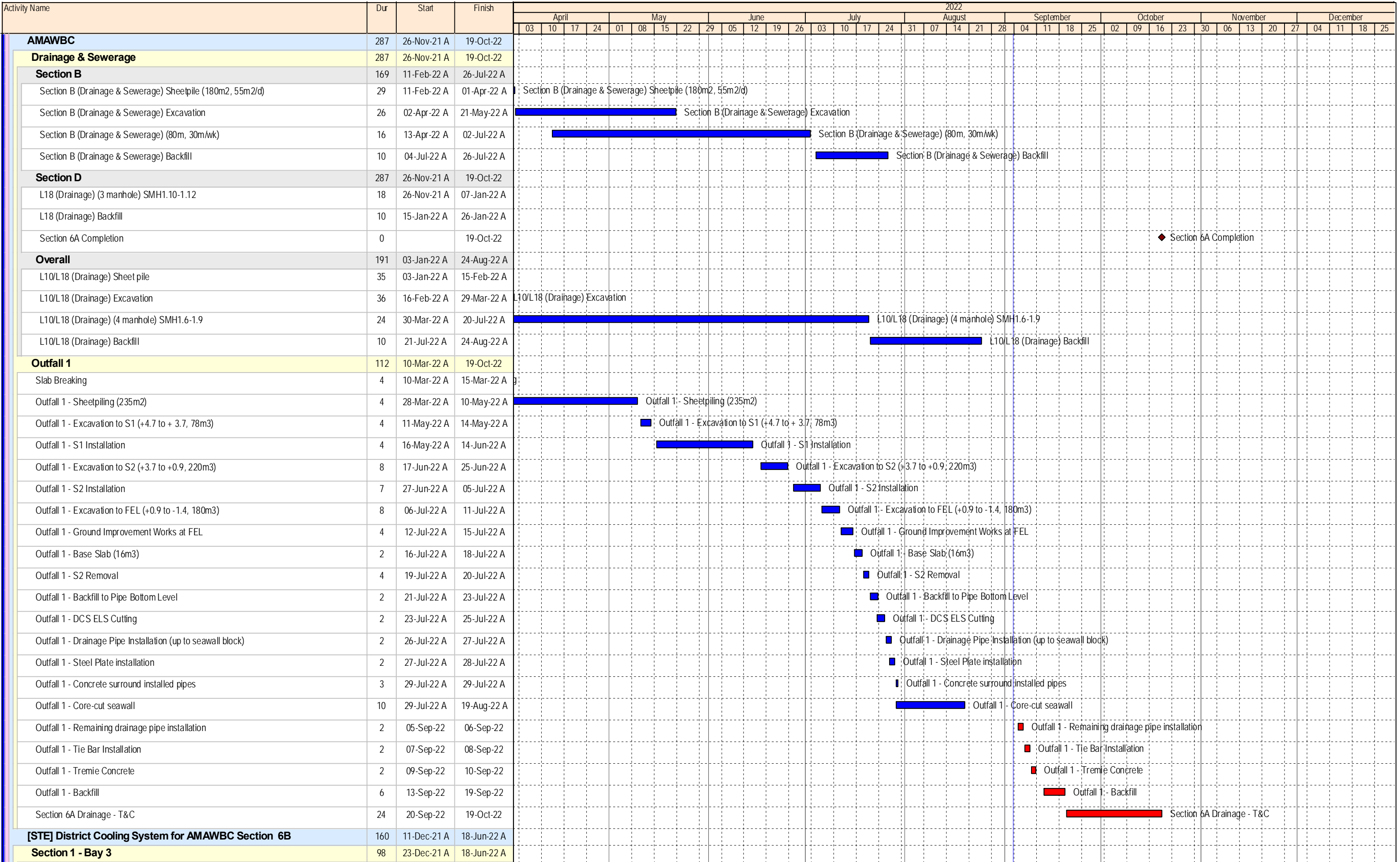
- ◆ Milestone
- Planned Bar
- Critical Activity
- ◆ Actual Milestone
- Actual Work

ED/2018/04 Trunk Road T2 and Infrastructure Works for Developments at South Apron

Three Months Rolling Programme (Aug-22)



Date	Revision	Checked	Approved
18-Dec-19	00V1	WYu	
22-Feb-20	01V0	SPa/LLo	WYu
09-Apr-20	01V1	SPa/LLo	WYu
17-Jul-20	01V2	SPa/LLo	WYu
09-Oct-20	01V3	SPa/LLo	WYu
02-Jul-21	02V0	SPa/LLo	WYu



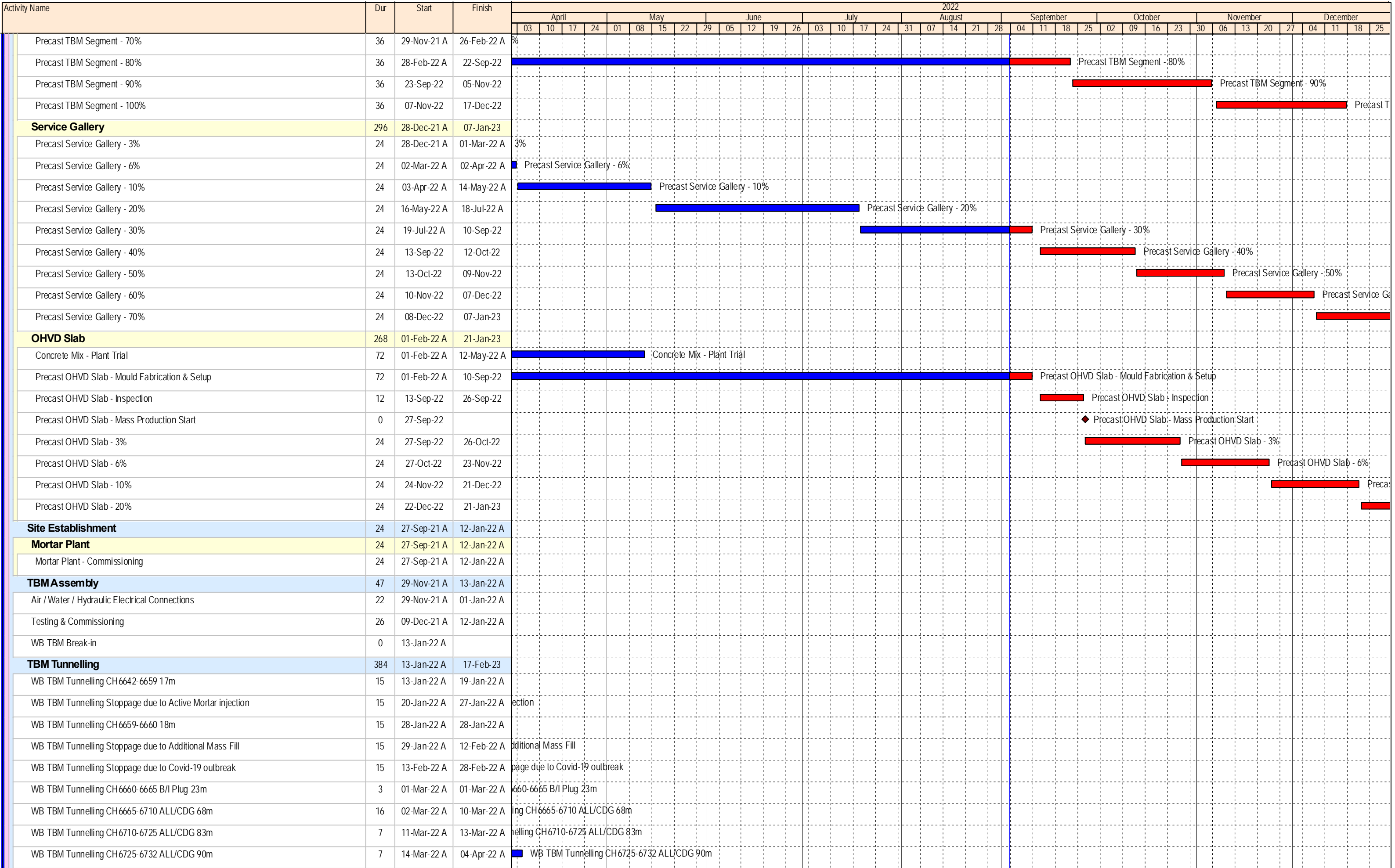
- ◆ Milestone
- ▬ Planned Bar
- ▬ Critical Activity
- ◆ Actual Milestone
- ▬ Actual Work

ED/2018/04 Trunk Road T2 and Infrastructure Works for Developments at South Apron

Three Months Rolling Programme (Aug-22)



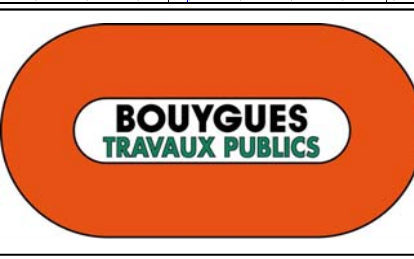
Date	Revision	Checked	Approved
18-Dec-19	00V1	WYu	
22-Feb-20	01V0	SPa/LLo	WYu
09-Apr-20	01V1	SPa/LLo	WYu
17-Jul-20	01V2	SPa/LLo	WYu
09-Oct-20	01V3	SPa/LLo	WYu
02-Jul-21	02V0	SPa/LLo	WYu



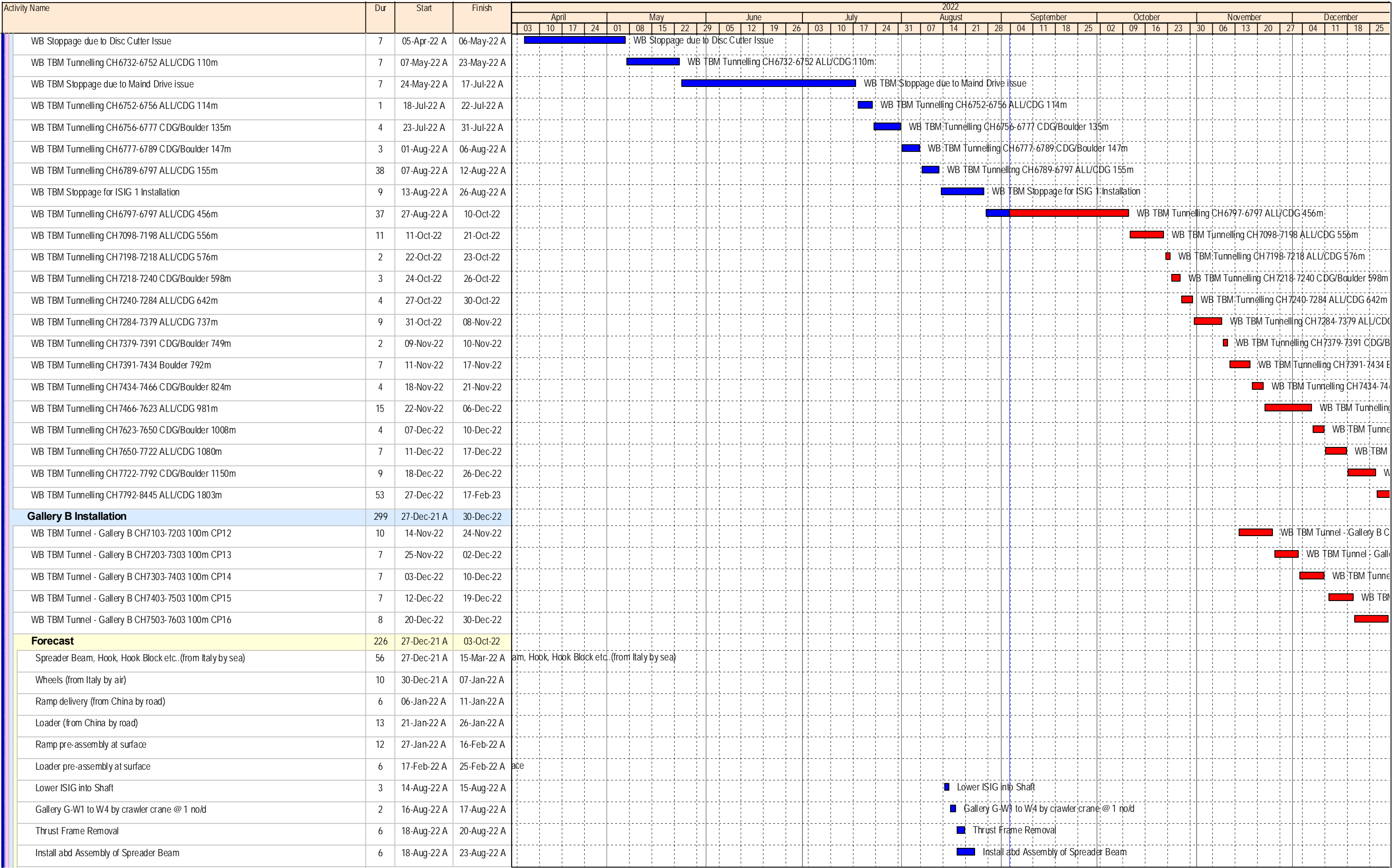
- ◆ Milestone
- Planned Bar
- Critical Activity
- ◆ Actual Milestone
- Actual Work

ED/2018/04 Trunk Road T2 and Infrastructure Works for Developments at South Apron

Three Months Rolling Programme (Aug-22)



Date	Revision	Checked	Approved
18-Dec-19	00V1	WYu	
22-Feb-20	01V0	SPa/LLo	WYu
09-Apr-20	01V1	SPa/LLo	WYu
17-Jul-20	01V2	SPa/LLo	WYu
09-Oct-20	01V3	SPa/LLo	WYu
02-Jul-21	02V0	SPa/LLo	WYu



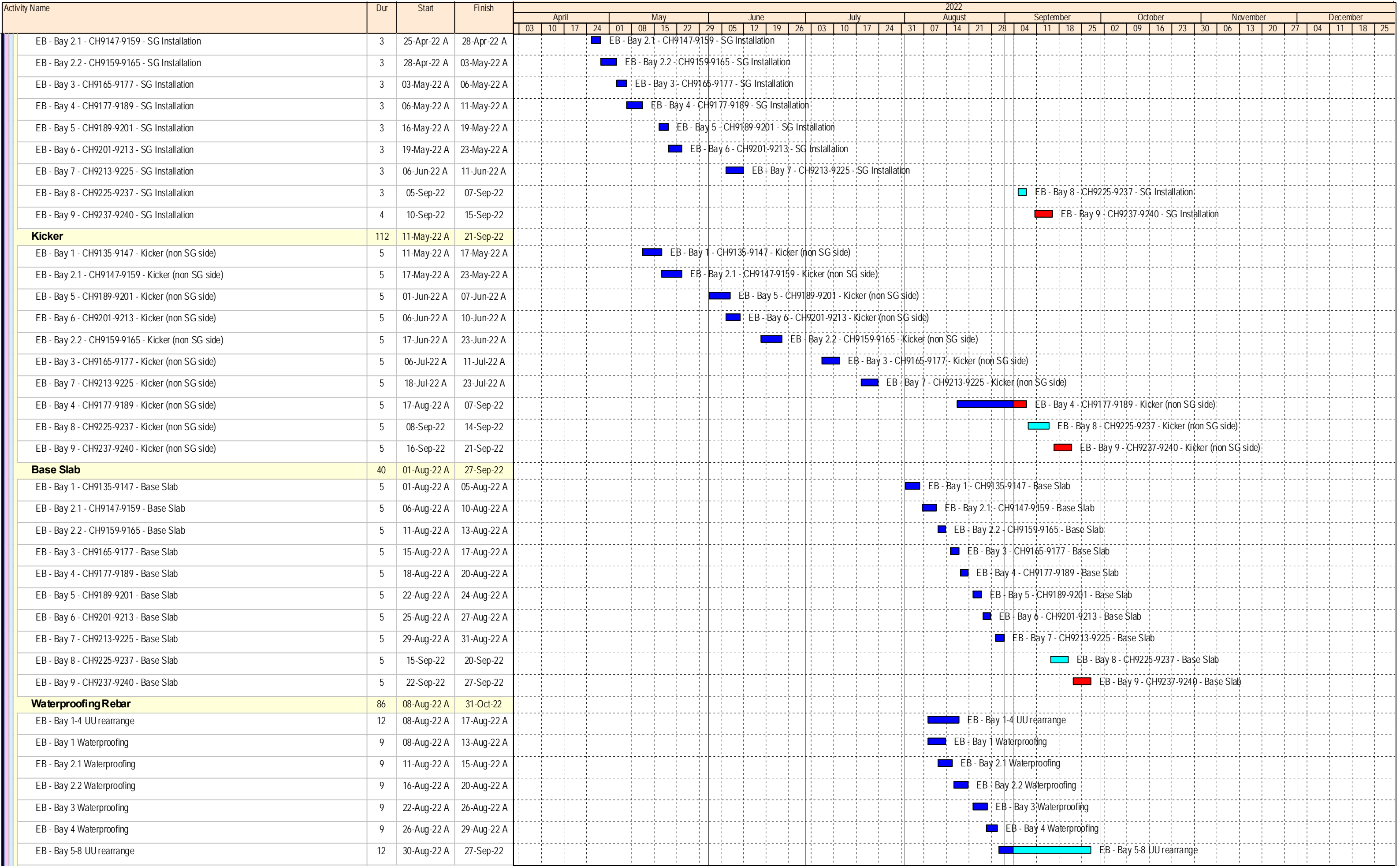
- ◆ Milestone
- Planned Bar
- Critical Activity
- ◆ Actual Milestone
- Actual Work

ED/2018/04 Trunk Road T2 and Infrastructure Works for Developments at South Apron

Three Months Rolling Programme (Aug-22)



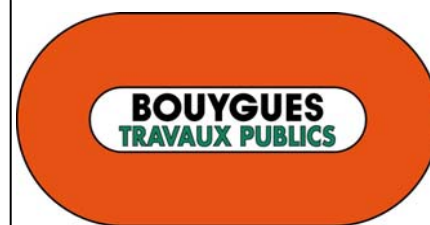
Date	Revision	Checked	Approved
18-Dec-19	00V1	WYu	
22-Feb-20	01V0	SPa/LLo	WYu
09-Apr-20	01V1	SPa/LLo	WYu
17-Jul-20	01V2	SPa/LLo	WYu
09-Oct-20	01V3	SPa/LLo	WYu
02-Jul-21	02V0	SPa/LLo	WYu



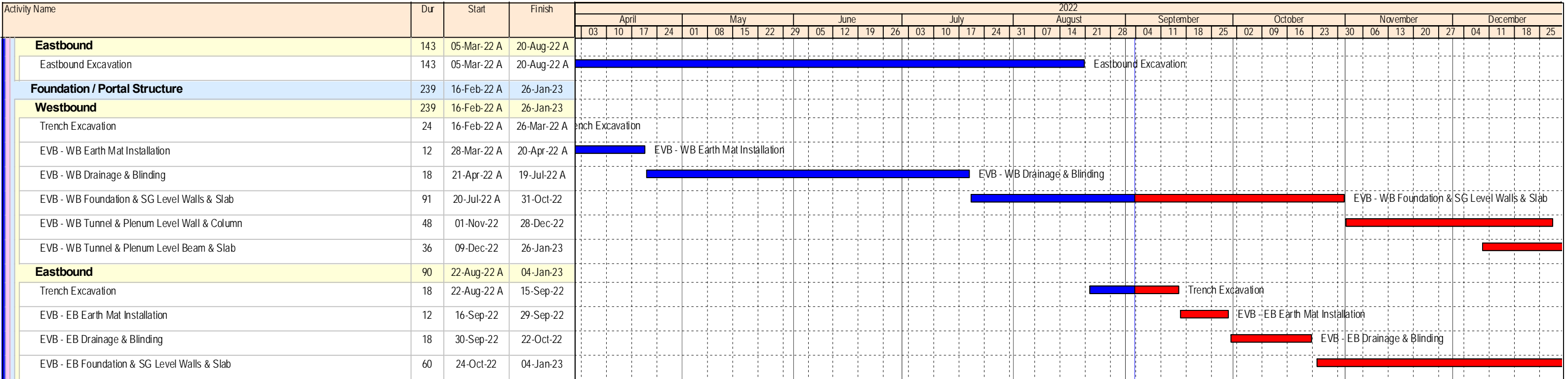
- ◆ Milestone
- Planned Bar
- Critical Activity
- ◆ Actual Milestone
- Actual Work

ED/2018/04 Trunk Road T2 and Infrastructure Works for Developments at South Apron

Three Months Rolling Programme (Aug-22)



Date	Revision	Checked	Approved
18-Dec-19	00V1	WYu	
22-Feb-20	01V0	SPa/LLo	WYu
09-Apr-20	01V1	SPa/LLo	WYu
17-Jul-20	01V2	SPa/LLo	WYu
09-Oct-20	01V3	SPa/LLo	WYu
02-Jul-21	02V0	SPa/LLo	WYu



- ◆ Milestone
- Planned Bar
- Critical Activity
- ◆ Actual Milestone
- Actual Work

**ED/2018/04 Trunk Road T2 and Infrastructure Works
for Developments at South Apron**

Three Months Rolling Programme (Aug-22)



Date	Revision	Checked	Approved
18-Dec-19	00V1	WYu	
22-Feb-20	01V0	SPa/LLo	WYu
09-Apr-20	01V1	SPa/LLo	WYu
17-Jul-20	01V2	SPa/LLo	WYu
09-Oct-20	01V3	SPa/LLo	WYu
02-Jul-21	02V0	SPa/LLo	WYu