

**24-hour TSP Monitoring Result for
Kai Tak Development - Stage 3 Infrastructure Works for
Developments at the Southern Part of the Former Runway**

KTD1a - Centre of Excellence in Paediatrics (Children's Hospital)

Start Date	Weather Condition	Air Temperature (K)	Atmospheric Pressure, Pa (mmHg)	Filter Weight (g)		Particulate weight (g)	Sampling Time(hrs)	Flow Rate (m ³ /min.)		Average flow (m ³ /min.)	Total volume (m ³)	Conc. (ug/m ³)	Action Level (ug/m ³)	Limit Level (ug/m ³)
				Initial	Final			Initial	Final					
3-Mar-17	Fine	290.4	762.8	2.8274	2.9982	0.1708	24	1.60	1.57	1.58	2279.9	75	177	260
9-Mar-17	Fine	290.0	761.8	2.8398	3.0531	0.2133	24	1.66	1.64	1.65	2373.6	90		
15-Mar-17	Cloudy	289.8	763.7	2.7812	2.9463	0.1651	24	1.53	1.51	1.52	2188.1	75		
21-Mar-17	Cloudy	295.9	761.3	2.8136	3.0769	0.2633	24	1.51	1.51	1.51	2536.3	104		
27-Mar-17	Cloudy	291.9	767.1	2.7432	3.1391	0.3959	24	1.69	1.67	1.68	2521.6	157		
												Min		
												Max	157	
												Average	100	

KTD2a - G/IC Zone next to Kwun Tong Bypass (Future Hospital at Site 3C1)

Start Date	Weather Condition	Air Temperature (K)	Atmospheric Pressure, Pa (mmHg)	Filter Weight (g)		Particulate weight (g)	Sampling Time(hrs)	Flow Rate (m ³ /min.)		Average flow (m ³ /min.)	Total volume (m ³)	Conc. (ug/m ³)	Action Level (ug/m ³)	Limit Level (ug/m ³)
				Initial	Final			Initial	Final					
3-Mar-17	Fine	290.4	762.8	2.8192	2.9003	0.0811	24	1.45	1.42	1.43	2064.8	39	157	260
9-Mar-17	Fine	290.0	761.8	2.8319	3.0200	0.1881	24	1.60	1.57	1.58	2277.8	83		
15-Mar-17	Cloudy	289.8	763.7	2.8127	2.9681	0.1554	24	1.67	1.64	1.66	2386.5	65		
21-Mar-17	Cloudy	295.9	761.3	2.8365	2.9413	0.1048	24	1.50	1.49	1.50	2158.0	49		
27-Mar-17	Cloudy	291.9	767.1	2.7722	2.8781	0.1059	24	1.67	1.57	1.62	2331.7	45		
												Min		
												Max	83	
												Average	56	

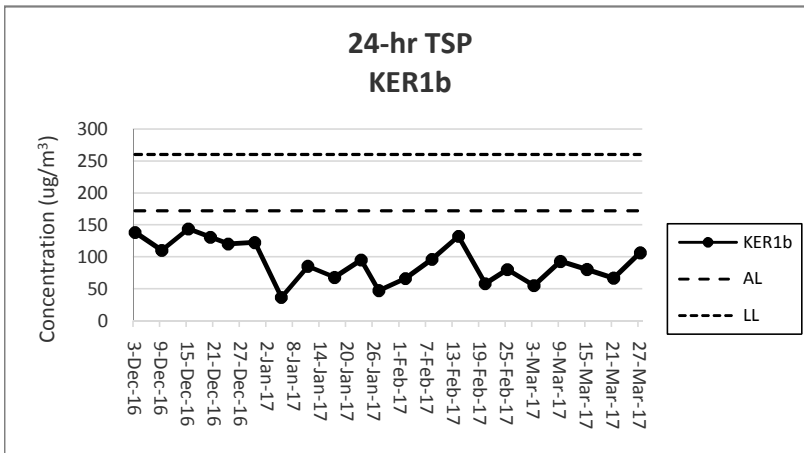
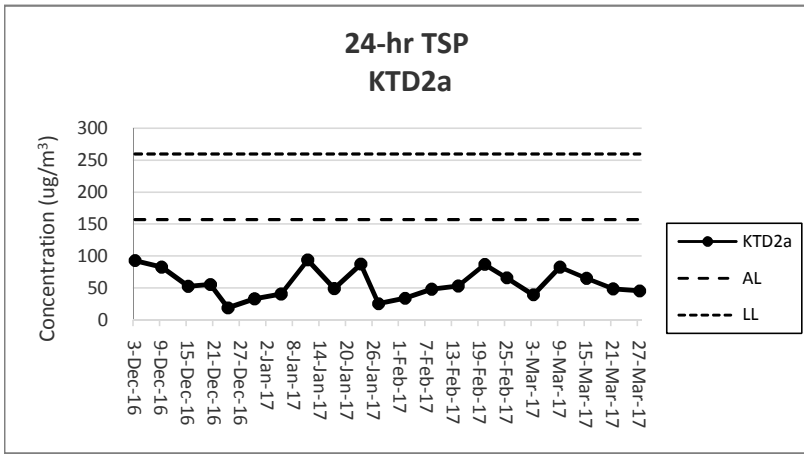
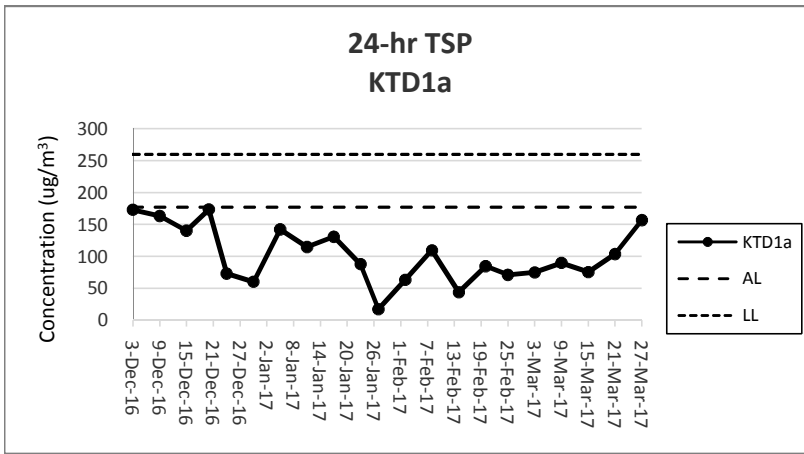
KER1b - Site Boundary at Cheung Yip Street

Start Date	Weather Condition	Air Temperature (K)	Atmospheric Pressure, Pa (mmHg)	Filter Weight (g)		Particulate weight (g)	Sampling Time(hrs)	Flow Rate (m ³ /min.)		Average flow (m ³ /min.)	Total volume (m ³)	Conc. (ug/m ³)	Action Level (ug/m ³)	Limit Level (ug/m ³)
				Initial	Final			Initial	Final					
3-Mar-17	Fine	290.4	762.8	2.8193	2.9318	0.1125	24	1.44	1.41	1.42	2049.5	55	172	260
9-Mar-17	Fine	290.0	761.8	2.8274	3.0259	0.1985	24	1.50	1.47	1.49	2139.2	93		
15-Mar-17	Cloudy	289.8	763.7	2.8199	2.9663	0.1464	24	1.28	1.26	1.27	1827.2	80		
21-Mar-17	Cloudy	295.9	761.3	2.8176	2.9593	0.1417	24	1.48	1.47	1.48	2126.1	67		
27-Mar-17	Cloudy	291.9	767.1	2.7588	2.9672	0.2084	24	1.40	1.32	1.36	1960.5	106		
												Min		
												Max	106	
												Average	80	

Note:

Underline: Exceedance of Action Level

Underline and Bold: Exceedance of Limit Level



Note:

- 1) The major activities being carried out on site during the reporting period can be referred to Section 1.3.2.
- 2) The weather conditions during the reporting period can be referred to Appendix K.
- 3) Any other factors which might affect the monitoring results can be referred to Section 2.6.4.
- 4) QA/QC results, calibration results and detection limits can be referred to Appendix D.