

**24-hour TSP Monitoring Result for
Kai Tak Development - Stage 3 Infrastructure Works for
Developments at the Southern Part of the Former Runway**

KTD1a - Centre of Excellence in Paediatrics (Children's Hospital)

Start Date	Weather Condition	Air Temperature (K)	Atmospheric Pressure, Pa (mmHg)	Filter Weight (g)		Particulate weight (g)	Sampling Time(hrs)	Flow Rate (m ³ /min.)		Average flow (m ³ /min.)	Total volume (m ³)	Conc. (ug/m ³)	Action Level (ug/m ³)	Limit Level (ug/m ³)	
				Initial	Final			Initial	Final						
5-May-17	Fine	299.1	760.3	2.8250	3.1880	0.3630	24	1.66	1.67	1.67	2499.3	145	177	260	
11-May-17	Fine	299.2	761.4	2.8038	2.9572	0.1534	24	1.50	1.51	1.51	2167.6	71			
17-May-17	Fine	299.0	757.3	2.8424	3.0438	0.2014	24	1.56	1.57	1.57	2257.7	89			
23-May-17	Cloudy	299.1	755.8	2.8494	3.2897	0.4403	24	1.69	1.67	1.68	2670.6	165			
31-May-17	Fine	299.6	757.5	2.8475	3.1919	0.3444	24	1.66	1.64	1.65	2471.5	139			
												Min	71		
												Max	165		
												Average	122		

KTD2a - G/IC Zone next to Kwun Tong Bypass (Future Hospital at Site 3C1)

Start Date	Weather Condition	Air Temperature (K)	Atmospheric Pressure, Pa (mmHg)	Filter Weight (g)		Particulate weight (g)	Sampling Time(hrs)	Flow Rate (m ³ /min.)		Average flow (m ³ /min.)	Total volume (m ³)	Conc. (ug/m ³)	Action Level (ug/m ³)	Limit Level (ug/m ³)	
				Initial	Final			Initial	Final						
5-May-17	Fine	299.1	760.3	2.8383	2.9831	0.1448	24	1.57	1.57	1.57	2255.9	64	157	260	
11-May-17	Fine	299.2	761.4	2.8241	2.9194	0.0953	24	1.42	1.42	1.42	2045.4	47			
17-May-17	Fine	299.0	757.3	2.8400	2.9929	0.1529	24	1.63	1.64	1.64	2359.1	65			
23-May-17	Cloudy	299.1	755.8	2.8298	2.9023	0.0725	24	1.56	1.57	1.56	2252.0	32			
29-May-17	Fine	299.6	757.5	2.8550	2.9399	0.0849	24	1.41	1.42	1.42	2041.4	42			
												Min	32		
												Max	65		
												Average	50		

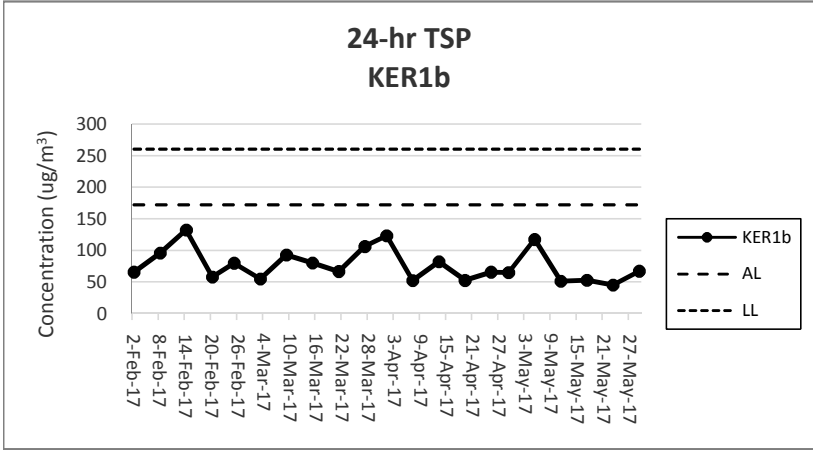
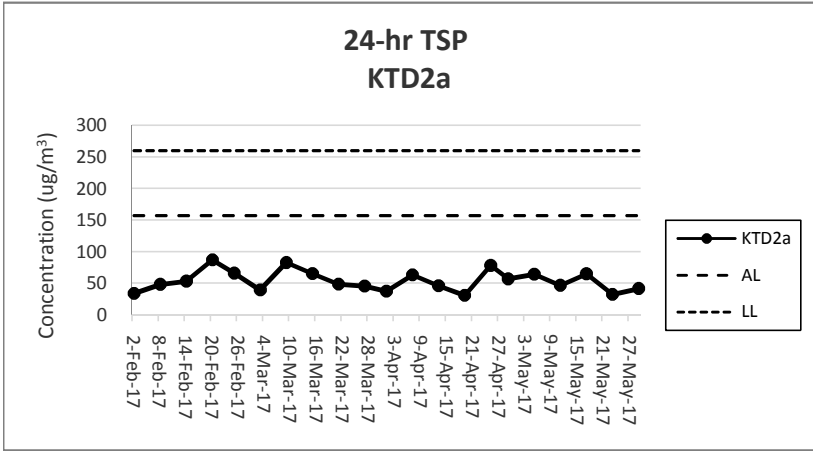
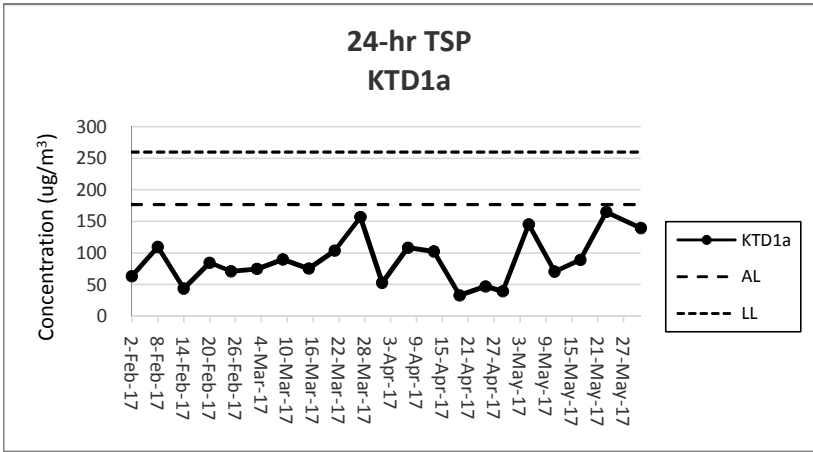
KER1b - Site Boundary at Cheung Yip Street

Start Date	Weather Condition	Air Temperature (K)	Atmospheric Pressure, Pa (mmHg)	Filter Weight (g)		Particulate weight (g)	Sampling Time(hrs)	Flow Rate (m ³ /min.)		Average flow (m ³ /min.)	Total volume (m ³)	Conc. (ug/m ³)	Action Level (ug/m ³)	Limit Level (ug/m ³)	
				Initial	Final			Initial	Final						
5-May-17	Fine	299.1	760.3	2.8593	3.1184	0.2591	24	1.47	1.47	1.47	2206.9	117	172	260	
11-May-17	Fine	299.2	761.4	2.8104	2.9102	0.0998	24	1.35	1.35	1.35	1941.4	51			
17-May-17	Fine	299.0	757.3	2.8316	2.9294	0.0978	24	1.28	1.29	1.28	1849.8	53			
23-May-17	Cloudy	299.1	755.8	2.8299	2.9177	0.0878	24	1.34	1.35	1.35	1937.3	45			
29-May-17	Fine	299.6	757.5	2.8472	2.9686	0.1214	24	1.25	1.26	1.25	1804.5	67			
												Min	45		
												Max	117		
												Average	67		

Note:

Underline: Exceedance of Action Level

Underline and Bold: Exceedance of Limit Level



Note:

- 1) The major activities being carried out on site during the reporting period can be referred to Section 1.3.2.
- 2) The weather conditions during the reporting period can be referred to Appendix K.
- 3) Any other factors which might affect the monitoring results can be referred to Section 2.6.4.
- 4) QA/QC results, calibration results and detection limits can be referred to Appendix D.