

**24-hour TSP Monitoring Result for
Kai Tak Development - Stage 3 Infrastructure Works for
Developments at the Southern Part of the Former Runway**

KTD1a - Centre of Excellence in Paediatrics (Children's Hospital)

Start Date	Weather Condition	Air Temperature (K)	Atmospheric Pressure, Pa (mmHg)	Filter Weight (g)		Particulate weight (g)	Sampling Time(hrs)	Flow Rate (m ³ /min.)		Average flow (m ³ /min.)	Total volume (m ³)	Conc. (ug/m ³)	Action Level (ug/m ³)	Limit Level (ug/m ³)	
				Initial	Final			Initial	Final						
3-Jan-18	Fine	292.4	763.9	2.5546	2.9193	0.3647	24	1.66	1.64	1.65	2370.1	154	177	260	
9-Jan-18	Cloudy	282.0	767.4	2.5967	2.6667	0.0700	24	1.56	1.51	1.53	2207.2	32			
15-Jan-18	Fine	288.3	764.2	2.5679	2.8569	0.2890	24	1.67	1.64	1.65	2379.4	121			
20-Jan-18	Fine	292.1	762.7	2.5874	2.8175	0.2301	24	1.66	1.64	1.65	2369.8	97			
26-Jan-18	Cloudy	290.1	763.0	2.5471	2.9119	0.3648	24	1.53	1.51	1.52	2186.9	167			
												Min	32		
												Max	167		
												Average	114		

KTD2a - G/IC Zone next to Kwun Tong Bypass (Future Hospital at Site 3C1)

Start Date	Weather Condition	Air Temperature (K)	Atmospheric Pressure, Pa (mmHg)	Filter Weight (g)		Particulate weight (g)	Sampling Time(hrs)	Flow Rate (m ³ /min.)		Average flow (m ³ /min.)	Total volume (m ³)	Conc. (ug/m ³)	Action Level (ug/m ³)	Limit Level (ug/m ³)	
				Initial	Final			Initial	Final						
3-Jan-18	Fine	292.4	763.9	2.5793	2.7499	0.1706	24	1.52	1.49	1.51	2167.8	79	157	260	
9-Jan-18	Cloudy	282.0	767.4	2.5645	2.6965	0.1320	24	1.55	1.49	1.52	2194.2	60			
15-Jan-18	Fine	288.3	764.2	2.5585	2.7612	0.2027	24	1.60	1.57	1.59	2283.9	89			
20-Jan-18	Fine	292.1	762.7	2.5814	2.7133	0.1319	24	1.52	1.49	1.51	2167.4	61			
26-Jan-18	Cloudy	290.1	763.0	2.5541	2.7543	0.2002	24	1.60	1.57	1.58	2278.6	88			
												Min	60		
												Max	89		
												Average	75		

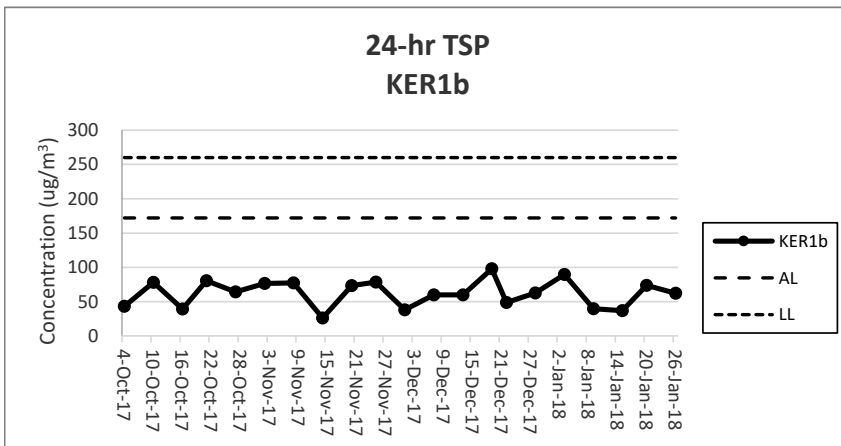
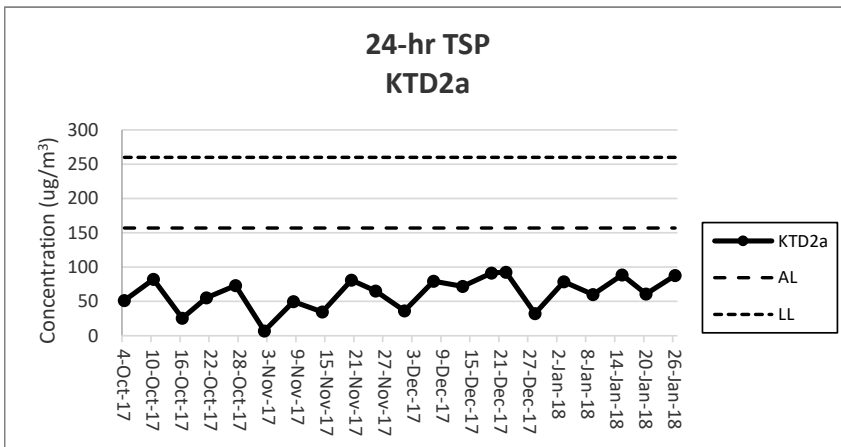
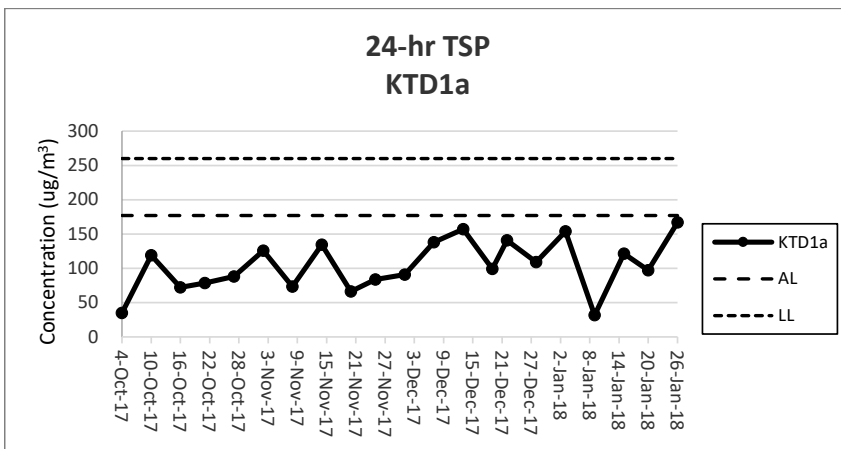
KER1b - Site Boundary at Cheung Yip Street

Start Date	Weather Condition	Air Temperature (K)	Atmospheric Pressure, Pa (mmHg)	Filter Weight (g)		Particulate weight (g)	Sampling Time(hrs)	Flow Rate (m ³ /min.)		Average flow (m ³ /min.)	Total volume (m ³)	Conc. (ug/m ³)	Action Level (ug/m ³)	Limit Level (ug/m ³)	
				Initial	Final			Initial	Final						
3-Jan-18	Fine	292.4	763.9	2.5727	2.7318	0.1591	24	1.24	1.23	1.23	1777.6	90	172	260	
9-Jan-18	Cloudy	282.0	767.4	2.5554	2.6269	0.0715	24	1.27	1.23	1.25	1799.9	40			
15-Jan-18	Fine	288.3	764.2	2.5775	2.6434	0.0659	24	1.25	1.23	1.24	1785.5	37			
20-Jan-18	Fine	292.1	762.7	2.5857	2.7100	0.1243	24	1.18	1.16	1.17	1687.8	74			
26-Jan-18	Cloudy	290.1	763.0	2.5788	2.6893	0.1105	24	1.25	1.23	1.24	1781.2	62			
												Min	37		
												Max	90		
												Average	60		

Note:

Underline: Exceedance of Action Level

Underline and Bold: Exceedance of Limit Level



Note:

- 1) The major activities being carried out on site during the reporting period can be referred to Section 1.3.2.
- 2) The weather conditions during the reporting period can be referred to Appendix K.
- 3) Any other factors which might affect the monitoring results can be referred to Section 2.6.4.
- 4) QA/QC results, calibration results and detection limits can be referred to Appendix D.