

**24-hour TSP Monitoring Result for
Kai Tak Development - Stage 3 Infrastructure Works for
Developments at the Southern Part of the Former Runway**

KTD1a - Centre of Excellence in Paediatrics (Children's Hospital)

Start Date	Weather Condition	Air Temperature (K)	Atmospheric Pressure, Pa (mmHg)	Filter Weight (g)		Particulate weight (g)	Sampling Time(hrs)	Flow Rate (m ³ /min.)		Average flow (m ³ /min.)	Total volume (m ³)	Conc. (ug/m ³)	Action Level (ug/m ³)	Limit Level (ug/m ³)	
				Initial	Final			Initial	Final						
3-Mar-18	Cloudy	295.0	758.5	2.6579	2.9955	0.3376	24	1.58	1.57	1.57	2266.8	149	177	260	
9-Mar-18	Fine	287.8	767.2	2.6851	2.8450	0.1599	24	1.54	1.51	1.52	2194.9	73			
15-Mar-18	Fine	295.1	759.9	2.6313	2.7864	0.1551	24	1.45	1.44	1.45	2081.3	75			
20-Mar-18	Fine	294.4	759.8	2.6687	2.7506	0.0819	24	1.52	1.51	1.51	2175.8	38			
24-Mar-18	Cloudy	294.1	764.2	2.6758	2.9487	0.2729	24	1.52	1.51	1.51	2179.8	125			
29-Mar-18	Fine	295.9	760.8	2.5813	2.7746	0.1933	24	1.45	1.44	1.44	2080.4	93			
												Min	38		
												Max	149		
												Average	92		

KTD2a - G/C Zone next to Kwun Tong Bypass (Future Hospital at Site 3C1)

Start Date	Weather Condition	Air Temperature (K)	Atmospheric Pressure, Pa (mmHg)	Filter Weight (g)		Particulate weight (g)	Sampling Time(hrs)	Flow Rate (m ³ /min.)		Average flow (m ³ /min.)	Total volume (m ³)	Conc. (ug/m ³)	Action Level (ug/m ³)	Limit Level (ug/m ³)	
				Initial	Final			Initial	Final						
3-Mar-18	Cloudy	295.0	758.5	2.6563	2.8926	0.2363	24	1.58	1.57	1.57	2263.5	104	157	260	
9-Mar-18	Fine	287.8	767.2	2.6883	2.8140	0.1257	24	1.53	1.49	1.51	2180.8	58			
15-Mar-18	Fine	295.1	759.9	2.6452	2.7925	0.1473	24	1.50	1.49	1.50	2158.5	68			
20-Mar-18	Fine	294.4	759.8	2.6581	2.7737	0.1156	24	1.51	1.49	1.50	2160.0	54			
24-Mar-18	Cloudy	294.1	764.2	2.6698	2.8720	0.2022	24	1.59	1.57	1.58	2270.5	89			
29-Mar-18	Fine	295.9	760.8	2.6723	2.7780	0.1057	24	1.50	1.49	1.50	2157.6	49			
												Min	49		
												Max	104		
												Average	70		

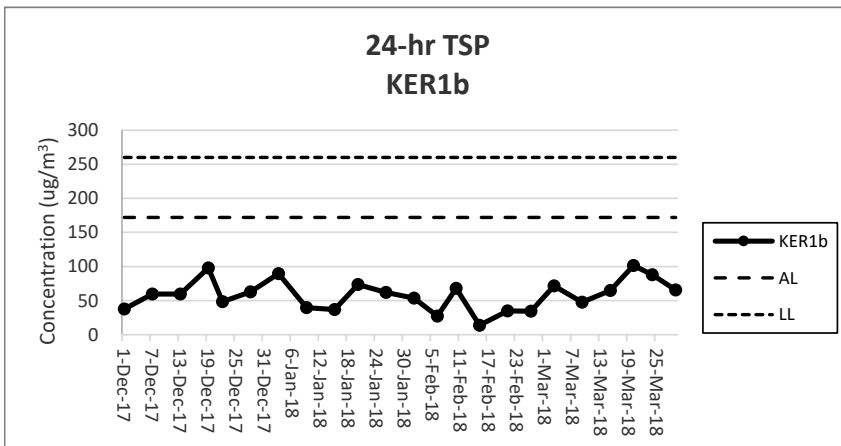
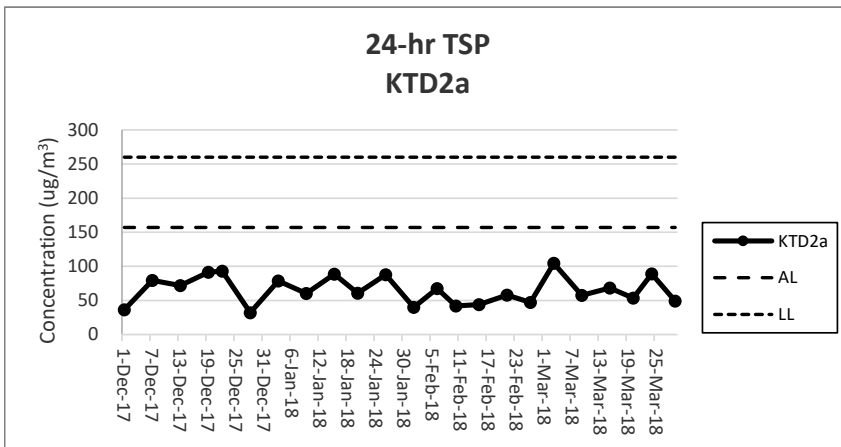
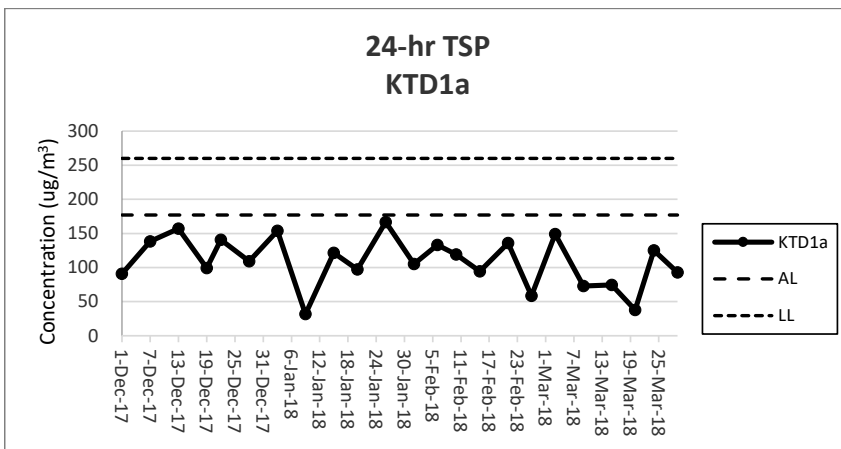
KER1b - Site Boundary at Cheung Yip Street

Start Date	Weather Condition	Air Temperature (K)	Atmospheric Pressure, Pa (mmHg)	Filter Weight (g)		Particulate weight (g)	Sampling Time(hrs)	Flow Rate (m ³ /min.)		Average flow (m ³ /min.)	Total volume (m ³)	Conc. (ug/m ³)	Action Level (ug/m ³)	Limit Level (ug/m ³)	
				Initial	Final			Initial	Final						
3-Mar-18	Cloudy	295.0	758.5	2.6543	2.7875	0.1332	24	1.29	1.29	1.29	1858.2	72	172	260	
9-Mar-18	Fine	287.8	767.2	2.6892	2.7748	0.0856	24	1.26	1.23	1.24	1788.6	48			
15-Mar-18	Fine	295.1	759.9	2.6472	2.7676	0.1204	24	1.29	1.29	1.29	1859.0	65			
20-Mar-18	Fine	294.4	759.8	2.6701	2.8590	0.1889	24	1.30	1.29	1.29	1860.3	102			
24-Mar-18	Cloudy	294.1	764.2	2.6656	2.8292	0.1636	24	1.30	1.29	1.29	1864.1	88			
29-Mar-18	Fine	295.9	760.8	2.5706	2.6864	0.1158	24	1.23	1.23	1.23	1769.0	65			
												Min	48		
												Max	102		
												Average	73		

Note:

Underline: Exceedance of Action Level

Underline and Bold: Exceedance of Limit Level



Note:

- 1) The major activities being carried out on site during the reporting period can be referred to Section 1.3.2.
- 2) The weather conditions during the reporting period can be referred to Appendix K.
- 3) Any other factors which might affect the monitoring results can be referred to Section 2.6.4.
- 4) QA/QC results, calibration results and detection limits can be referred to Appendix D.