

**24-hour TSP Monitoring Result for
Kai Tak Development - Stage 3 Infrastructure Works for
Developments at the Southern Part of the Former Runway**

KTD1a - Centre of Excellence in Paediatrics (Children's Hospital)

Start Date	Weather Condition	Air Temperature (K)	Atmospheric Pressure, Pa (mmHg)	Filter Weight (g)		Particulate weight (g)	Sampling Time(hrs)	Flow Rate (m ³ /min.)		Average flow (m ³ /min.)	Total volume (m ³)	Conc. (ug/m ³)	Action Level (ug/m ³)	Limit Level (ug/m ³)	
				Initial	Final			Initial	Final						
4-Apr-18	Fine	297.7	759.6	2.6682	2.8290	0.1608	24	1.51	1.51	1.51	2169.2	74	177	260	
10-Apr-18	Fine	296.8	761.1	2.6738	2.8025	0.1287	24	1.32	1.31	1.31	1892.7	68			
16-Apr-18	Cloudy	291.5	762.4	2.6877	2.7397	0.0520	24	1.30	1.28	1.29	1856.0	28			
21-Apr-18	Cloudy	297.5	773.4	2.6907	2.9184	0.2277	24	1.29	1.28	1.29	1853.0	123			
27-Apr-18	Fine	297.9	761.3	2.6663	2.7997	0.1334	24	1.28	1.28	1.28	1844.4	72			
												Min	28		
												Max	123		
												Average	73		

KTD2a - G/IC Zone next to Kwun Tong Bypass (Future Hospital at Site 3C1)

Start Date	Weather Condition	Air Temperature (K)	Atmospheric Pressure, Pa (mmHg)	Filter Weight (g)		Particulate weight (g)	Sampling Time(hrs)	Flow Rate (m ³ /min.)		Average flow (m ³ /min.)	Total volume (m ³)	Conc. (ug/m ³)	Action Level (ug/m ³)	Limit Level (ug/m ³)	
				Initial	Final			Initial	Final						
4-Apr-18	Fine	297.7	759.6	2.6767	2.8123	0.1356	24	1.57	1.57	1.57	2258.4	60	157	260	
10-Apr-18	Fine	296.8	761.1	2.6689	2.8445	0.1756	24	1.35	1.35	1.35	1944.2	90			
16-Apr-18	Cloudy	291.5	762.4	2.6748	2.7400	0.0652	24	1.44	1.42	1.43	2062.1	32			
21-Apr-18	Cloudy	297.5	773.4	2.6633	3.0047	0.3414	24	1.59	1.57	1.58	2270.8	150			
27-Apr-18	Fine	297.9	761.3	2.6573	2.8909	0.2336	24	1.57	1.57	1.57	2259.5	103			
												Min	32		
												Max	150		
												Average	87		

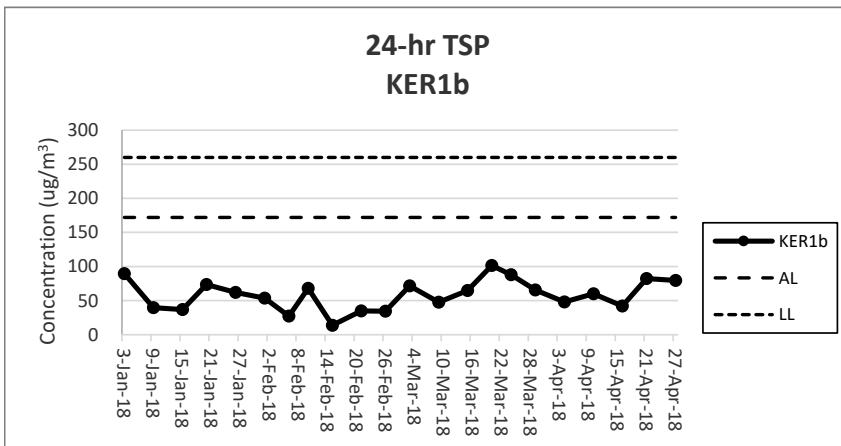
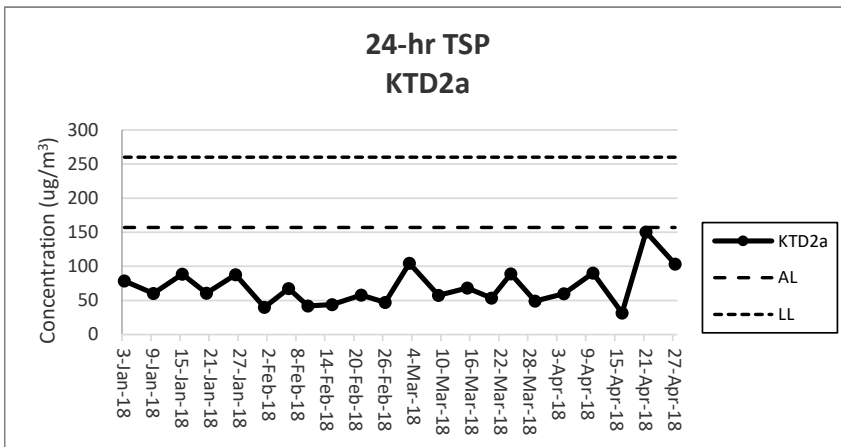
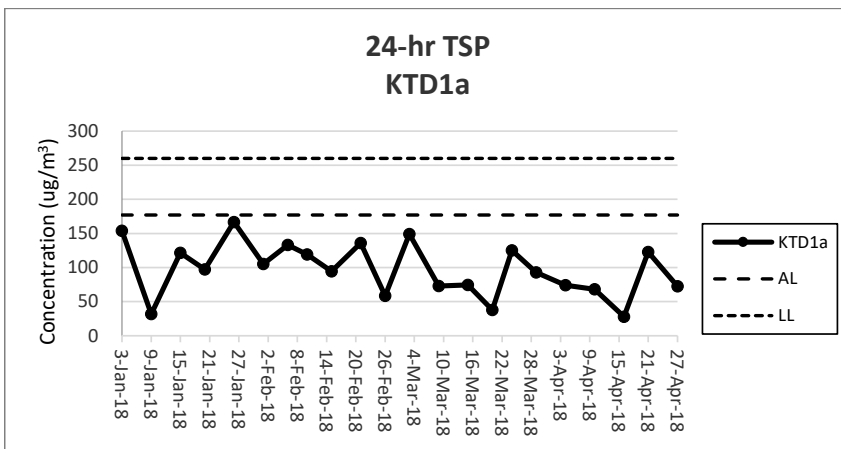
KER1b - Site Boundary at Cheung Yip Street

Start Date	Weather Condition	Air Temperature (K)	Atmospheric Pressure, Pa (mmHg)	Filter Weight (g)		Particulate weight (g)	Sampling Time(hrs)	Flow Rate (m ³ /min.)		Average flow (m ³ /min.)	Total volume (m ³)	Conc. (ug/m ³)	Action Level (ug/m ³)	Limit Level (ug/m ³)	
				Initial	Final			Initial	Final						
4-Apr-18	Fine	297.7	759.6	2.6516	2.7410	0.0894	24	1.29	1.29	1.29	1853.9	48	172	260	
10-Apr-18	Fine	296.8	761.1	2.6692	2.7670	0.0978	24	1.14	1.13	1.13	1633.9	60			
16-Apr-18	Cloudy	291.5	762.4	2.6952	2.7590	0.0638	24	1.06	1.04	1.05	1509.5	42			
21-Apr-18	Cloudy	297.5	773.4	2.6646	2.7959	0.1313	24	1.11	1.10	1.11	1596.1	82			
27-Apr-18	Fine	297.9	761.3	2.6660	2.7886	0.1226	24	1.07	1.07	1.07	1543.2	79			
												Min	42		
												Max	82		
												Average	62		

Note:

Underline: Exceedance of Action Level

Underline and Bold: Exceedance of Limit Level



Note:

- 1) The major activities being carried out on site during the reporting period can be referred to Section 1.3.2.
- 2) The weather conditions during the reporting period can be referred to Appendix K.
- 3) Any other factors which might affect the monitoring results can be referred to Section 2.6.4.
- 4) QA/QC results, calibration results and detection limits can be referred to Appendix D.