

**24-hour TSP Monitoring Result for
Kai Tak Development - Stage 3 Infrastructure Works for
Developments at the Southern Part of the Former Runway**

KTD1a - Centre of Excellence in Paediatrics (Children's Hospital)

Start Date	Weather Condition	Air Temperature (K)	Atmospheric Pressure, Pa (mmHg)	Filter Weight (g)		Particulate weight (g)	Sampling Time(hrs)	Flow Rate (m ³ /min.)		Average flow (m ³ /min.)	Total volume (m ³)	Conc. (ug/m ³)	Action Level (ug/m ³)	Limit Level (ug/m ³)
				Initial	Final			Initial	Final					
3-May-18	Fine	300.1	760.6	2.6619	2.7165	0.0546	24	1.31	1.31	1.31	1886.7	29	177	260
9-May-18	Cloudy	297.6	759.7	2.6581	2.7080	0.0499	24	1.51	1.51	1.51	2169.4	23		
15-May-18	Fine	301.7	757.0	2.6763	2.7486	0.0723	24	1.49	1.51	1.50	2159.5	33		
21-May-18	Fine	303.3	757.2	2.6722	2.7954	0.1232	24	1.49	1.51	1.50	2156.6	57		
26-May-18	Fine	303.7	756.3	2.6674	2.7093	0.0419	24	1.49	1.51	1.50	2155.1	19		
											Min	19		
											Max	57		
											Average	32		

KTD2a - G/IC Zone next to Kwun Tong Bypass (Future Hospital at Site 3C1)

Start Date	Weather Condition	Air Temperature (K)	Atmospheric Pressure, Pa (mmHg)	Filter Weight (g)		Particulate weight (g)	Sampling Time(hrs)	Flow Rate (m ³ /min.)		Average flow (m ³ /min.)	Total volume (m ³)	Conc. (ug/m ³)	Action Level (ug/m ³)	Limit Level (ug/m ³)
				Initial	Final			Initial	Final					
3-May-18	Fine	300.1	760.6	2.6558	2.8186	0.1629	24	1.56	1.57	1.57	2254.0	72	157	260
9-May-18	Cloudy	297.6	759.7	2.6569	2.7672	0.1103	24	1.35	1.35	1.35	1941.5	57		
15-May-18	Fine	301.7	757.0	2.5543	2.6433	0.0890	24	1.55	1.57	1.56	2247.4	40		
21-May-18	Fine	303.3	757.2	2.6540	2.7014	0.0474	24	1.55	1.57	1.56	2244.1	21		
26-May-18	Fine	303.7	756.3	2.6973	2.7781	0.0808	24	1.47	1.49	1.48	2137.4	38		
											Min	21		
											Max	72		
											Average	46		

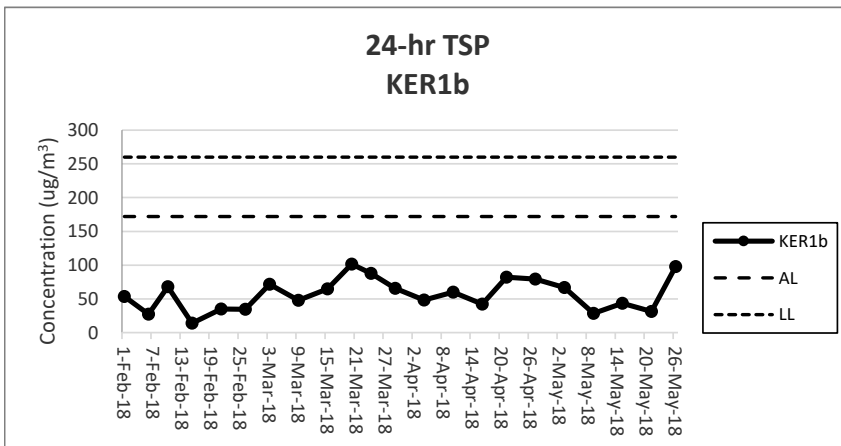
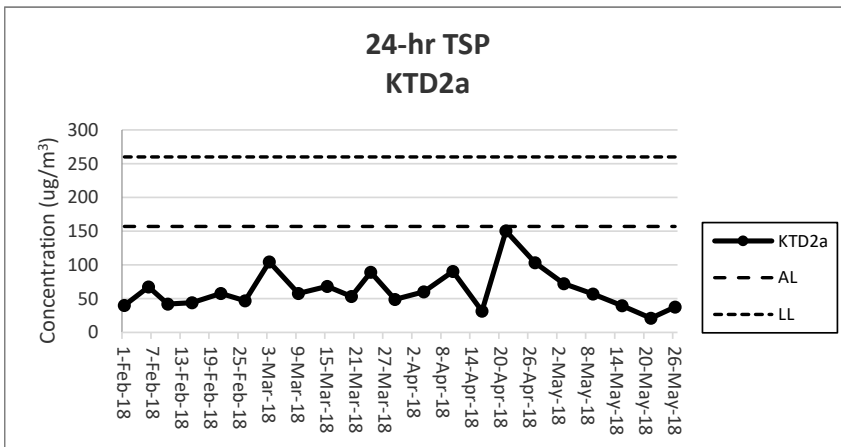
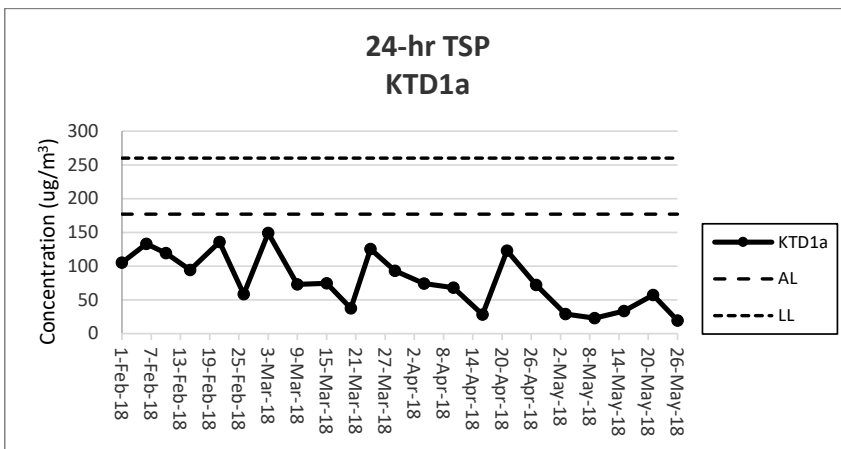
KER1b - Site Boundary at Cheung Yip Street

Start Date	Weather Condition	Air Temperature (K)	Atmospheric Pressure, Pa (mmHg)	Filter Weight (g)		Particulate weight (g)	Sampling Time(hrs)	Flow Rate (m ³ /min.)		Average flow (m ³ /min.)	Total volume (m ³)	Conc. (ug/m ³)	Action Level (ug/m ³)	Limit Level (ug/m ³)
				Initial	Final			Initial	Final					
3-May-18	Fine	300.1	760.6	2.6447	2.7444	0.0997	24	1.04	1.04	1.04	1494.8	67	172	260
9-May-18	Cloudy	297.6	759.7	2.6664	2.7196	0.0532	24	1.29	1.29	1.29	1854.2	29		
15-May-18	Fine	301.7	757.0	2.6763	2.7486	0.0723	24	1.15	1.16	1.16	1667.4	43		
21-May-18	Fine	303.3	757.2	2.6596	2.7176	0.0580	24	1.27	1.29	1.28	1841.9	31		
26-May-18	Fine	303.7	756.3	2.6822	2.8365	0.1543	24	1.09	1.10	1.09	1575.1	98		
											Min	29		
											Max	98		
											Average	54		

Note:

Underline: Exceedance of Action Level

Underline and Bold: Exceedance of Limit Level



Note:

- 1) The major activities being carried out on site during the reporting period can be referred to Section 1.3.2.
- 2) The weather conditions during the reporting period can be referred to Appendix K.
- 3) Any other factors which might affect the monitoring results can be referred to Section 2.6.4.
- 4) QA/QC results, calibration results and detection limits can be referred to Appendix D.