

**24-hour TSP Monitoring Result for
Kai Tak Development - Stage 3 Infrastructure Works for
Developments at the Southern Part of the Former Runway**

KTD1a - Centre of Excellence in Paediatrics (Children's Hospital)

Start Date	Weather Condition	Air Temperature (K)	Atmospheric Pressure, Pa (mmHg)	Filter Weight (g)		Particulate weight (g)	Sampling Time(hrs)	Flow Rate (m ³ /min.)		Average flow (m ³ /min.)	Total volume (m ³)	Conc. (ug/m ³)	Action Level (ug/m ³)	Limit Level (ug/m ³)	
				Initial	Final			Initial	Final						
1-Jun-18	Fine	303.2	757.5	2.6907	2.9020	0.2113	24	1.55	1.57	1.56	2249.5	94	177	260	
7-Jun-18	Cloudy	300.3	753.3	2.6929	2.7633	0.0704	24	1.56	1.57	1.56	2251.9	31			
13-Jun-18	Cloudy	299.6	748.7	2.6606	2.7272	0.0666	24	1.23	1.25	1.24	1787.0	37			
19-Jun-18	Fine	302.6	753.1	2.6805	2.6969	0.0164	24	1.23	1.25	1.24	1785.0	9			
25-Jun-18	Fine	301.1	756.7	2.6810	2.7170	0.0360	24	1.24	1.25	1.24	1789.7	20			
30-Jun-18	Fine	303.4	753.1	2.7158	2.7959	0.0801	24	1.23	1.25	1.24	1783.7	45			
												Min	9		
												Max	94		
												Average	39		

KTD2a - G/C Zone next to Kwun Tong Bypass (Future Hospital at Site 3C1)

Start Date	Weather Condition	Air Temperature (K)	Atmospheric Pressure, Pa (mmHg)	Filter Weight (g)		Particulate weight (g)	Sampling Time(hrs)	Flow Rate (m ³ /min.)		Average flow (m ³ /min.)	Total volume (m ³)	Conc. (ug/m ³)	Action Level (ug/m ³)	Limit Level (ug/m ³)	
				Initial	Final			Initial	Final						
1-Jun-18	Fine	303.2	757.5	2.6837	2.8080	0.1243	24	1.19	1.20	1.19	1718.7	72	157	260	
7-Jun-18	Cloudy	300.3	753.3	2.6851	2.7350	0.0499	24	1.63	1.64	1.63	2352.5	21			
13-Jun-18	Cloudy	299.6	748.7	2.6476	2.7308	0.0832	24	1.62	1.64	1.63	2349.9	35			
19-Jun-18	Fine	302.6	753.1	2.6852	2.7488	0.0636	24	1.55	1.57	1.56	2242.1	28			
25-Jun-18	Fine	301.1	756.7	2.6842	2.7417	0.0575	24	1.63	1.64	1.63	2353.8	24			
30-Jun-18	Fine	303.4	753.1	2.7000	2.7375	0.0375	24	1.25	1.27	1.26	1820.3	21			
												Min	21		
												Max	72		
												Average	34		

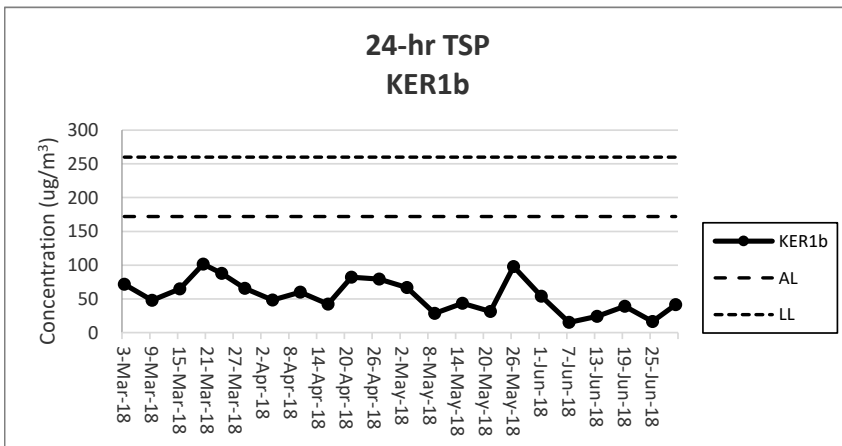
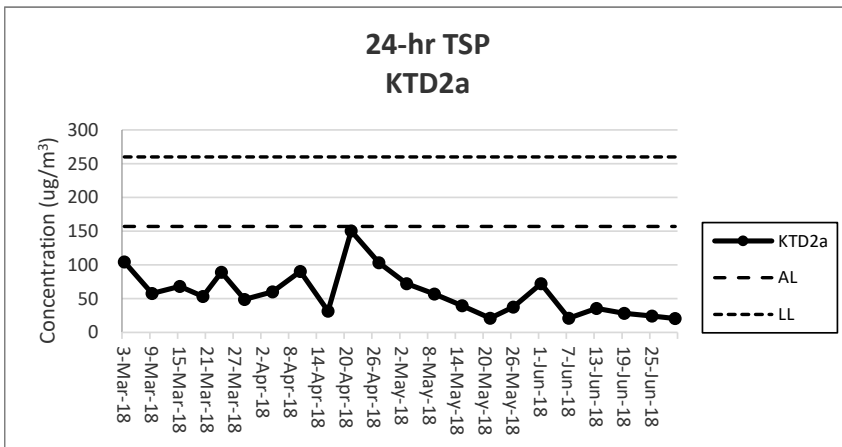
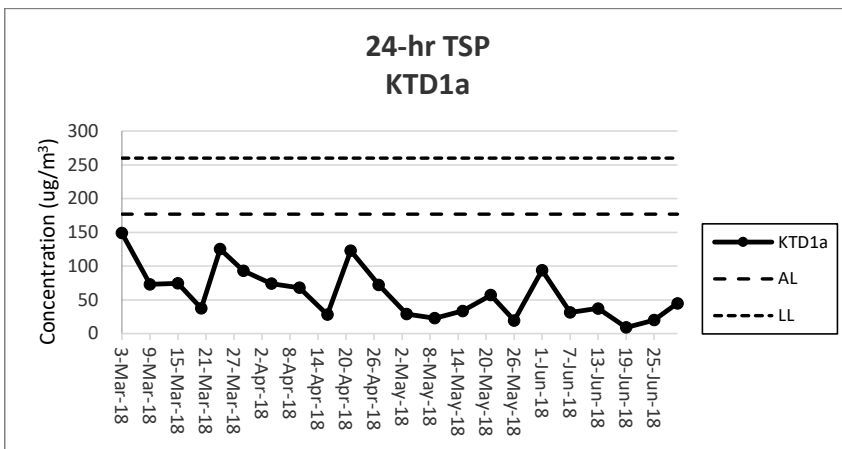
KER1b - Site Boundary at Cheung Yip Street

Start Date	Weather Condition	Air Temperature (K)	Atmospheric Pressure, Pa (mmHg)	Filter Weight (g)		Particulate weight (g)	Sampling Time(hrs)	Flow Rate (m ³ /min.)		Average flow (m ³ /min.)	Total volume (m ³)	Conc. (ug/m ³)	Action Level (ug/m ³)	Limit Level (ug/m ³)	
				Initial	Final			Initial	Final						
1-Jun-18	Fine	303.2	757.5	2.6765	2.7570	0.0805	24	1.03	1.04	1.03	1488.1	54	172	260	
7-Jun-18	Cloudy	300.3	753.3	2.6716	2.6941	0.0225	24	1.03	1.04	1.03	1490.0	15			
13-Jun-18	Cloudy	299.6	748.7	2.6591	2.7031	0.0440	24	1.27	1.29	1.28	1842.4	24			
19-Jun-18	Fine	302.6	753.1	2.6702	2.7420	0.0718	24	1.27	1.29	1.28	1840.1	39			
25-Jun-18	Fine	301.1	756.7	2.6788	2.7079	0.0291	24	1.21	1.23	1.22	1756.8	17			
30-Jun-18	Fine	303.4	753.1	2.6730	2.7381	0.0651	24	1.08	1.10	1.09	1573.5	41			
												Min	15		
												Max	54		
												Average	32		

Note:

Underline: Exceedance of Action Level

Underline and Bold: Exceedance of Limit Level



Note:

- 1) The major activities being carried out on site during the reporting period can be referred to Section 1.3.2.
- 2) The weather conditions during the reporting period can be referred to Appendix K.
- 3) Any other factors which might affect the monitoring results can be referred to Section 2.6.4.
- 4) QA/QC results, calibration results and detection limits can be referred to Appendix D.