

**24-hour TSP Monitoring Result for
Kai Tak Development - Stage 3 Infrastructure Works for
Developments at the Southern Part of the Former Runway**

KTD1a - Centre of Excellence in Paediatrics (Children's Hospital)

Start Date	Weather Condition	Air Temperature (K)	Atmospheric Pressure, Pa (mmHg)	Filter Weight (g)		Particulate weight (g)	Sampling Time(hrs)	Flow Rate (m ³ /min.)		Average flow (m ³ /min.)	Total volume (m ³)	Conc. (ug/m ³)	Action Level (ug/m ³)	Limit Level (ug/m ³)	
				Initial	Final			Initial	Final						
5-Nov-18	Fine	297.5	762.7	2.6566	2.7569	0.1003	24	1.45	1.44	1.44	2078.8	48	177	260	
10-Nov-18	Fine	269.9	763.5	2.6666	2.9349	0.2683	24	1.46	1.38	1.42	2039.8	132			
16-Nov-18	Fine	269.9	761.5	2.6217	2.7556	0.1339	24	1.45	1.38	1.42	2038.3	66			
22-Nov-18	Fine	293.4	765.0	2.6773	2.8871	0.2098	24	1.39	1.38	1.39	1994.8	105			
28-Nov-18	Cloudy	293.3	764.5	2.6206	2.6853	0.0647	24	1.33	1.31	1.32	1901.1	34			
												Min	34		
												Max	132		
												Average	77		

KTD 2b: G/C Zone next to Kwun Tong Bypass (Next to the site of the New Acute Hospital)

Start Date	Weather Condition	Air Temperature (K)	Atmospheric Pressure, Pa (mmHg)	Filter Weight (g)		Particulate weight (g)	Sampling Time(hrs)	Flow Rate (m ³ /min.)		Average flow (m ³ /min.)	Total volume (m ³)	Conc. (ug/m ³)	Action Level (ug/m ³)	Limit Level (ug/m ³)	
				Initial	Final			Initial	Final						
5-Nov-18	Fine	297.5	762.7	2.6485	2.8088	0.1603	24	1.28	1.27	1.28	1838.1	87	157	260	
10-Nov-18	Fine	269.9	763.5	2.6684	2.8989	0.2305	24	1.67	1.57	1.62	2328.4	99			
16-Nov-18	Fine	269.9	761.5	2.6896	2.8608	0.1712	24	1.66	1.57	1.62	2326.6	74			
22-Nov-18	Fine	293.4	765.0	2.6722	2.9471	0.2749	24	1.59	1.57	1.58	2272.8	121			
28-Nov-18	Cloudy	293.3	764.5	2.6166	2.7311	0.1145	24	1.59	1.57	1.58	2272.6	50			
												Min	50		
												Max	121		
												Average	86		

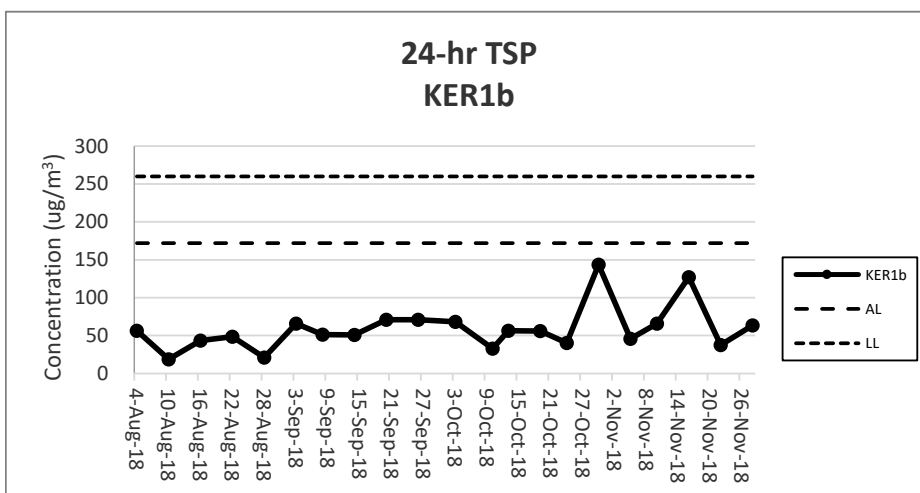
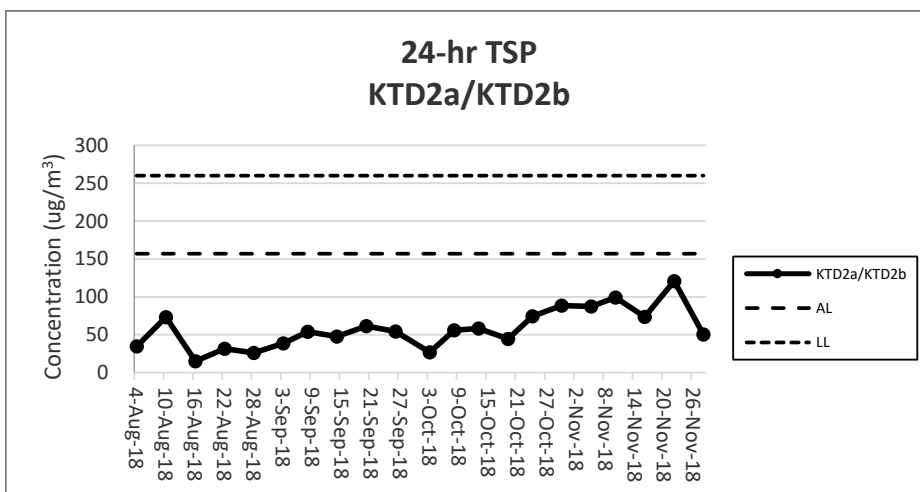
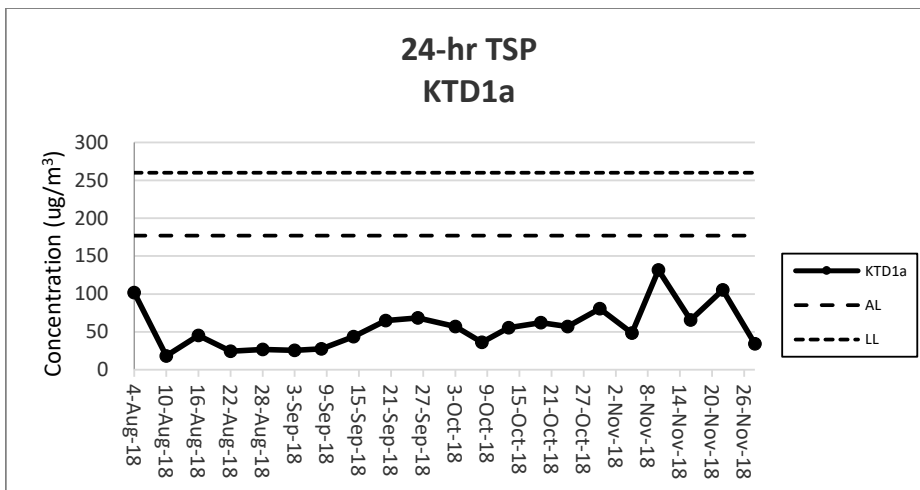
KER1b - Site Boundary at Cheung Yip Street

Start Date	Weather Condition	Air Temperature (K)	Atmospheric Pressure, Pa (mmHg)	Filter Weight (g)		Particulate weight (g)	Sampling Time(hrs)	Flow Rate (m ³ /min.)		Average flow (m ³ /min.)	Total volume (m ³)	Conc. (ug/m ³)	Action Level (ug/m ³)	Limit Level (ug/m ³)	
				Initial	Final			Initial	Final						
5-Nov-18	Fine	297.5	762.7	2.6583	2.7350	0.0767	24	1.17	1.16	1.17	1678.3	46	172	260	
10-Nov-18	Fine	269.9	763.5	2.6382	2.7519	0.1137	24	1.24	1.16	1.20	1730.1	66			
16-Nov-18	Fine	269.9	761.5	2.6833	2.9144	0.2311	24	1.30	1.23	1.26	1820.0	127			
22-Nov-18	Fine	293.4	765.0	2.6874	2.7573	0.0699	24	1.30	1.29	1.30	1866.0	37			
28-Nov-18	Cloudy	293.3	764.5	2.6677	2.7689	0.1012	24	1.12	1.10	1.11	1597.4	63			
												Min	37		
												Max	127		
												Average	68		

Note:

Underline: Exceedance of Action Level

Underline and Bold: Exceedance of Limit Level



Note:

- 1) The major activities being carried out on site during the reporting period can be referred to Section 1.3.2.
- 2) The weather conditions during the reporting period can be referred to Appendix K.
- 3) Any other factors which might affect the monitoring results can be referred to Section 2.6.4.
- 4) QA/QC results, calibration results and detection limits can be referred to Appendix D.
- 5) KTD 2a was relocated to KTD2b on 9 August 2018
- 6) Power supply of high volume sampler at KER1b was suspended on 8 October 2018 due to the damage of the cable, TSP monitoring was resumed at 10 October 2018.