

**24-hour TSP Monitoring Result for
Kai Tak Development - Stage 3 Infrastructure Works for
Developments at the Southern Part of the Former Runway**

KTD1a - Centre of Excellence in Paediatrics (Children's Hospital)

Start Date	Weather Condition	Air Temperature (K)	Atmospheric Pressure, Pa (mmHg)	Filter Weight (g)		Particulate weight (g)	Sampling Time(hrs)	Flow Rate (m ³ /min.)		Average flow (m ³ /min.)	Total volume (m ³)	Conc. (ug/m ³)	Action Level (ug/m ³)	Limit Level (ug/m ³)	
				Initial	Final			Initial	Final						
3-Jun-19	Cloudy	300.5	755.5	2.6925	2.7536	0.0611	24	1.62	1.64	1.63	2346.0	26	177	260	
8-Jun-19	Fine	303.1	756.4	2.7200	2.8408	0.1208	24	1.42	1.44	1.43	2063.9	59			
14-Jun-19	Fine	301.4	751.9	2.6876	2.7942	0.1066	24	1.49	1.51	1.50	2156.1	49			
20-Jun-19	Fine	303.1	755.2	2.6924	2.7996	0.1072	24	1.42	1.44	1.43	2063.0	52			
26-Jun-19	Cloudy	301.6	753.1	2.6917	2.8680	0.1763	24	1.49	1.51	1.50	2156.6	82			
												Min	26		
												Max	82		
												Average	54		

KTD 2b: G/IC Zone next to Kwun Tong Bypass (Next to the site of the New Acute Hospital)

Start Date	Weather Condition	Air Temperature (K)	Atmospheric Pressure, Pa (mmHg)	Filter Weight (g)		Particulate weight (g)	Sampling Time(hrs)	Flow Rate (m ³ /min.)		Average flow (m ³ /min.)	Total volume (m ³)	Conc. (ug/m ³)	Action Level (ug/m ³)	Limit Level (ug/m ³)	
				Initial	Final			Initial	Final						
3-Jun-19	Cloudy	300.5	755.5	2.6717	2.7856	0.1139	24	1.63	1.64	1.63	2354.1	48	157	260	
8-Jun-19	Fine	303.1	756.4	2.7042	2.8357	0.1315	24	1.55	1.64	1.59	2296.7	57			
14-Jun-19	Fine	301.4	751.9	2.6644	2.8227	0.1583	24	1.55	1.57	1.56	2243.6	71			
20-Jun-19	Fine	303.1	755.2	2.6883	2.8497	0.1614	24	1.62	1.64	1.63	2347.9	69			
26-Jun-19	Cloudy	301.6	753.1	2.6800	2.8317	0.1517	24	1.48	1.49	1.49	2139.0	71			
												Min	48		
												Max	71		
												Average	63		

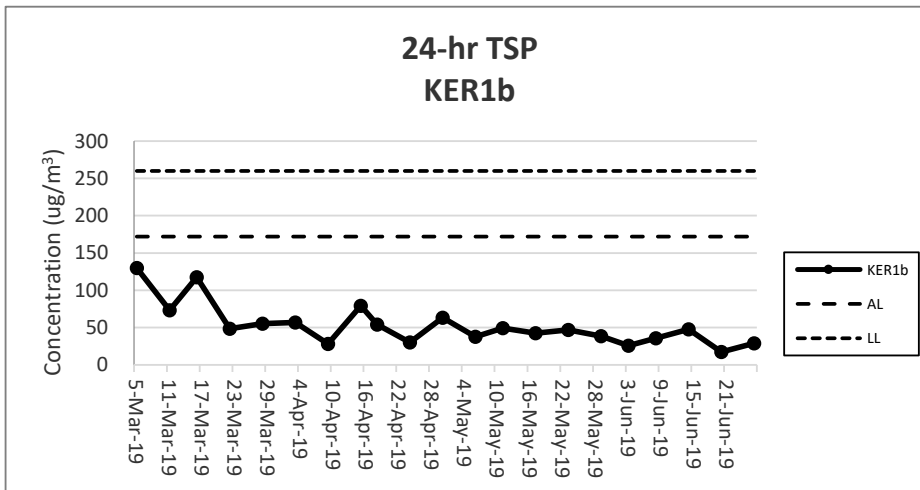
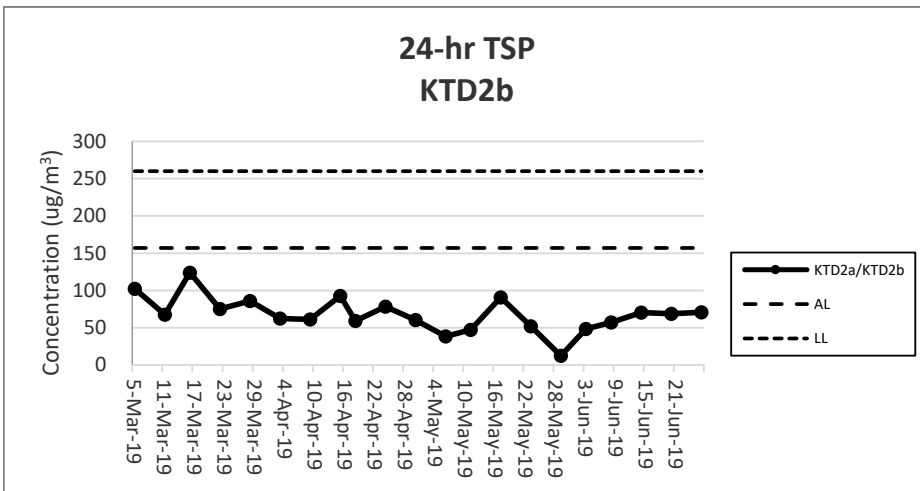
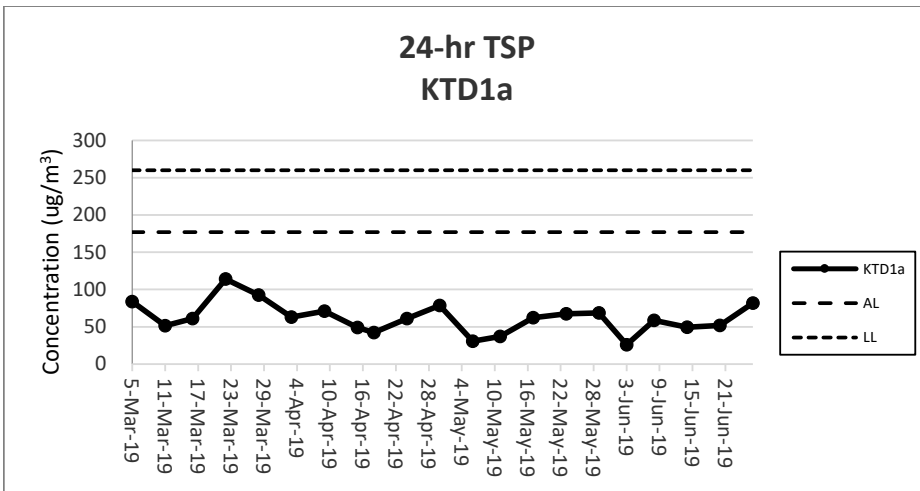
KER1b - Site Boundary at Cheung Yip Street

Start Date	Weather Condition	Air Temperature (K)	Atmospheric Pressure, Pa (mmHg)	Filter Weight (g)		Particulate weight (g)	Sampling Time(hrs)	Flow Rate (m ³ /min.)		Average flow (m ³ /min.)	Total volume (m ³)	Conc. (ug/m ³)	Action Level (ug/m ³)	Limit Level (ug/m ³)	
				Initial	Final			Initial	Final						
3-Jun-19	Cloudy	300.5	755.5	2.6929	2.7431	0.0502	24	1.34	1.35	1.34	1934.4	26	172	260	
8-Jun-19	Fine	303.1	756.4	2.7143	2.7802	0.0659	24	1.27	1.29	1.28	1841.7	36			
14-Jun-19	Fine	301.4	751.9	2.6724	2.7561	0.0837	24	1.21	1.23	1.22	1752.9	48			
20-Jun-19	Fine	303.1	755.2	2.6955	2.7259	0.0304	24	1.21	1.23	1.22	1752.3	17			
26-Jun-19	Cloudy	301.6	753.1	2.7066	2.7599	0.0533	24	1.27	1.29	1.28	1841.9	29			
												Min	17		
												Max	48		
												Average	31		

Note:

Underline: Exceedance of Action Level

Underline and Bold: Exceedance of Limit Level



Note:

- 1) The major activities being carried out on site during the reporting period can be referred to Section 1.3.2.
- 2) The weather conditions during the reporting period can be referred to Appendix K.
- 3) Any other factors which might affect the monitoring results can be referred to Section 2.6.4.
- 4) QA/QC results, calibration results and detection limits can be referred to Appendix D.