

#	Activity Name	Dur	Start	Finish	2024																											
					March			April					May					June				July				August						
					17	24	31	07	14	21	28	05	12	19	26	02	09	16	23	30	07	14	21	28	04	11	18	25				
1	ED/2018/04 TRUNK ROAD T2	172	31-Jan-24	30-Aug-24																												
2	SUPPORTING UNDERGROUND STRUCTURE [SUS]	133	02-Mar-24	13-Aug-24																												
3	Skin Wall Construction	95	02-Mar-24	28-Jun-24																												
4	Westbound	76	02-Mar-24	05-Jun-24																												
5	Road level CH6+259 to CH6+567 (308m; 15m/bay; 21 bays)	76	02-Mar-24	05-Jun-24																												
6	Bay 3	4	02-Mar-24	06-Mar-24																												
7	Bay 4	4	07-Mar-24	11-Mar-24																												
8	Bay 5	4	12-Mar-24	15-Mar-24																												
9	Bay 6	4	16-Mar-24	20-Mar-24																												
10	Bay 7	4	21-Mar-24	25-Mar-24																												
11	Bay 8	4	26-Mar-24	02-Apr-24																												
12	Bay 9	4	03-Apr-24	08-Apr-24																												
13	Bay 10	4	09-Apr-24	12-Apr-24																												
14	Bay 11	4	13-Apr-24	17-Apr-24																												
15	Bay 12	4	18-Apr-24	22-Apr-24																												
16	Bay 13	4	23-Apr-24	26-Apr-24																												
17	Bay 14	4	27-Apr-24	02-May-24																												
18	Bay 15	4	03-May-24	07-May-24																												
19	Bay 16	4	08-May-24	11-May-24																												
20	Bay 17	4	13-May-24	17-May-24																												
21	Bay 18	4	18-May-24	22-May-24																												
22	Bay 19	4	23-May-24	27-May-24																												
23	Bay 20	4	28-May-24	31-May-24																												
24	Bay 21	4	01-Jun-24	05-Jun-24																												
25	Eastbound	94	04-Mar-24	28-Jun-24																												
26	Road level CH6+236 to CH6+567 (331m; 15m/bay; 22 bays)	88	11-Mar-24	28-Jun-24																												
27	Bay 1	4	11-Mar-24*	14-Mar-24																												
28	Bay 2	4	15-Mar-24	19-Mar-24																												
29	Bay 3	4	20-Mar-24	23-Mar-24																												
30	Bay 4	4	25-Mar-24	28-Mar-24																												
31	Bay 5	4	02-Apr-24	06-Apr-24																												
32	Bay 6	4	08-Apr-24	11-Apr-24																												
33	Bay 7	4	12-Apr-24	16-Apr-24																												
34	Bay 8	4	17-Apr-24	20-Apr-24																												
35	Bay 9	4	22-Apr-24	25-Apr-24																												
36	Bay 10	4	26-Apr-24	30-Apr-24																												

- ◆ Milestone
- Planned Bar
- Critical Bar

**ED/2018/04 Trunk Road T2 and Infrastructure Works
for Developments at South Apron**

Three Months Rolling Programme (Apr-24)



Date	Revision	Checked	Approved
31-Jan-24	Rev. A	SPa	

#	Activity Name	Dur	Start	Finish	2024																							
					March			April				May				June				July				August				
					17	24	31	07	14	21	28	05	12	19	26	02	09	16	23	30	07	14	21	28	04	11	18	25
37	Bay 11	4	02-May-24	06-May-24																								
38	Bay 1	4	07-May-24*	10-May-24																								
39	Bay 2	4	11-May-24	16-May-24																								
40	Bay 3	4	17-May-24	21-May-24																								
41	Bay 4	4	22-May-24	25-May-24																								
42	Bay 5	4	27-May-24	30-May-24																								
43	Bay 6	4	31-May-24	04-Jun-24																								
44	Bay 7	4	05-Jun-24	08-Jun-24																								
45	Bay 8	4	11-Jun-24	14-Jun-24																								
46	Bay 9	4	15-Jun-24	19-Jun-24																								
47	Bay 10	4	20-Jun-24	24-Jun-24																								
48	Bay 11	4	25-Jun-24	28-Jun-24																								
49	Crown level CH6+236 to CH6+567 (331m; 40m/bay; 9 bays)	72	04-Mar-24	01-Jun-24																								
50	Bay 1	8	04-Mar-24	12-Mar-24																								
51	Bay 2	8	13-Mar-24	21-Mar-24																								
52	Bay 3	8	22-Mar-24	03-Apr-24																								
53	Bay 4	8	05-Apr-24	13-Apr-24																								
54	Bay 5	8	15-Apr-24	23-Apr-24																								
55	Bay 6	8	24-Apr-24	03-May-24																								
56	Bay 7	8	04-May-24	13-May-24																								
57	Bay 8	8	14-May-24	23-May-24																								
58	Bay 9	8	24-May-24	01-Jun-24																								
59	Tunnel Internal Structure & Finishing	57	06-Jun-24	13-Aug-24																								
60	Westbound	44	06-Jun-24	29-Jul-24																								
61	SUS - WB NCPS Fire Board 420m @ 13.2m/d	32	06-Jun-24	15-Jul-24																								
62	SUS - WB NCPS E&M Bracket 420m leadtime	12	16-Jul-24	29-Jul-24																								
63	SUS - WB NCPS TCSS Access Date	0		29-Jul-24																								
64	Eastbound	50	15-Jun-24	13-Aug-24																								
65	SUS - EB NCPS Fire Board 420m @ 13.2m/d	32	15-Jun-24	23-Jul-24																								
66	SUS - EB NCPS E&M Bracket 420m leadtime	18	24-Jul-24	13-Aug-24																								
67	SUS - EB NCPS TCSS Access Date	0		13-Aug-24																								
68	WEST VENTILATION BUILDING [WVB]	121	01-Mar-24	30-Jul-24																								
69	WVB Construction	96	05-Apr-24	30-Jul-24																								
70	External Works / EVA	96	05-Apr-24	30-Jul-24																								
71	Access Road Construction	36	05-Apr-24	18-May-24																								
72	Fire Hydrants confirmation from FSD for FSI inspection	0		01-Jun-24																								
73	EVA Construction	24	20-May-24	17-Jun-24																								

- ◆ Milestone
- ▬ Planned Bar
- ▬ Critical Bar

ED/2018/04 Trunk Road T2 and Infrastructure Works
for Developments at South Apron

Three Months Rolling Programme (Apr-24)



Date	Revision	Checked	Approved
31-Jan-24	Rev. A	SPa	

#	Activity Name	Dur	Start	Finish	2024																											
					March	April			May			June			July			August														
					17	24	31	07	14	21	28	05	12	19	26	02	09	16	23	30	07	14	21	28	04	11	18	25				
74	Available CKR access for FSD inspection	36	18-Jun-24	30-Jul-24	Available CKR access for FSD																											
75	Essential Criteria for FSI	84	01-Mar-24	15-Jun-24																												
76	Power Engerization	45	06-Apr-24	30-May-24																												
77	CLP Installation	45	06-Apr-24	30-May-24	CLP Installation																											
78	CLP Tx Rm - Power On	0		30-May-24	◆ CLP Tx Rm - Power On																											
79	Dangerous Goods Licenses	84	01-Mar-24	15-Jun-24																												
80	WVB - Genset & Oil Tank delivery on site	0		01-Mar-24	WVB - Genset & Oil Tank delivery on site																											
81	WVB - Genset & Oil Tank Installation and T&C	48	02-Mar-24	02-May-24	WVB - Genset & Oil Tank Installation and T&C																											
82	Receipt of report of compliance	0		10-May-24	◆ Receipt of report of compliance																											
83	Submission of Application	7	03-May-24	10-May-24	Submission of Application																											
84	DG Licenses Inspection (Vent) by FSD	0		20-May-24	◆ DG Licenses Inspection (Vent) by FSD																											
85	DG Licenses Inspection (Layout) by FSD	0		07-Jun-24	◆ DG Licenses Inspection (Layout) by FSD																											
86	Issuance of Certificate from FSD	0		15-Jun-24	◆ Issuance of Certificate from FSD																											
87	Fireman Lift	36	13-Apr-24	27-May-24																												
88	T&C (by OTIS) & Issue WR1 / Submisison of LE5	24	13-Apr-24	11-May-24	T&C (by OTIS) & Issue WR1 / Submisison of LE5																											
89	EMSD Inspection	12	13-May-24	27-May-24	EMSD Inspection																											
90	Issuance of Permit by EMSD	0		27-May-24	◆ Issuance of Permit by EMSD																											
91	Water Supply	50	15-Apr-24	15-Jun-24																												
92	FS Water (Inside WVB)	37	30-Apr-24	15-Jun-24																												
93	Submission of WW046 Part IV for FS Water	0		30-Apr-24	◆ Submission of WW046 Part IV for FS Water																											
94	Inspection for FS Water & Issuance of WW046 part V (a) by WSD	12	17-May-24	30-May-24	Inspection for FS Water & Issuance of WW046 part V (a) by WSD																											
95	Pipe Sterilization & Water Sampling	6	31-May-24	06-Jun-24	Pipe Sterilization & Water Sampling																											
96	Water Sample Testing	3	07-Jun-24	11-Jun-24	Water Sample Testing																											
97	Issuance of WW046 Part V(b) from WSD	0		11-Jun-24	◆ Issuance of WW046 Part V(b) from WSD																											
98	Issuance of WWO1005 Certificate for FS Water from WSD	0		15-Jun-24	◆ Issuance of WWO1005 Certificate for FS Water from WSD																											
99	Connect pipe insde WVB to Master Meter Cabinet	4	12-Jun-24	15-Jun-24	Connect pipe insde WVB to Master Meter Cabinet																											
100	FS Lead-in Watermain	31	15-Apr-24	23-May-24																												
101	Submission WW046 Part IV for water connection	0		15-Apr-24	◆ Submission WW046 Part IV for water connection																											
102	Inspection for FS Lead-in watermain & issuance of WW046 part V	12	27-Apr-24	11-May-24	Inspection for FS Lead-in watermain & issuance of WW046 part V (a) by WSD																											
103	Pipe Sterilization & Water Sampling	6	13-May-24	20-May-24	Pipe Sterilization & Water Sampling																											
104	Issuance of WW046 Part V(b) from WSD	0		23-May-24	◆ Issuance of WW046 Part V(b) from WSD																											
105	Water Sample Testing	3	21-May-24	23-May-24	Water Sample Testing																											
106	Final T&C and FSI Inspection	50	31-May-24	30-Jul-24																												
107	Submit Application Form (FS501)	0		17-Jun-24	◆ Submit Application Form (FS501)																											
108	WVB - Overall T&C	26	31-May-24	02-Jul-24	WVB - Overall T&C																											
109	FSI Acceptance Inspection	24	03-Jul-24	30-Jul-24	FSI Acceptance Inspection																											
110	Issuance of FS Certificate	0		30-Jul-24	◆ Issuance of FS Certificate																											

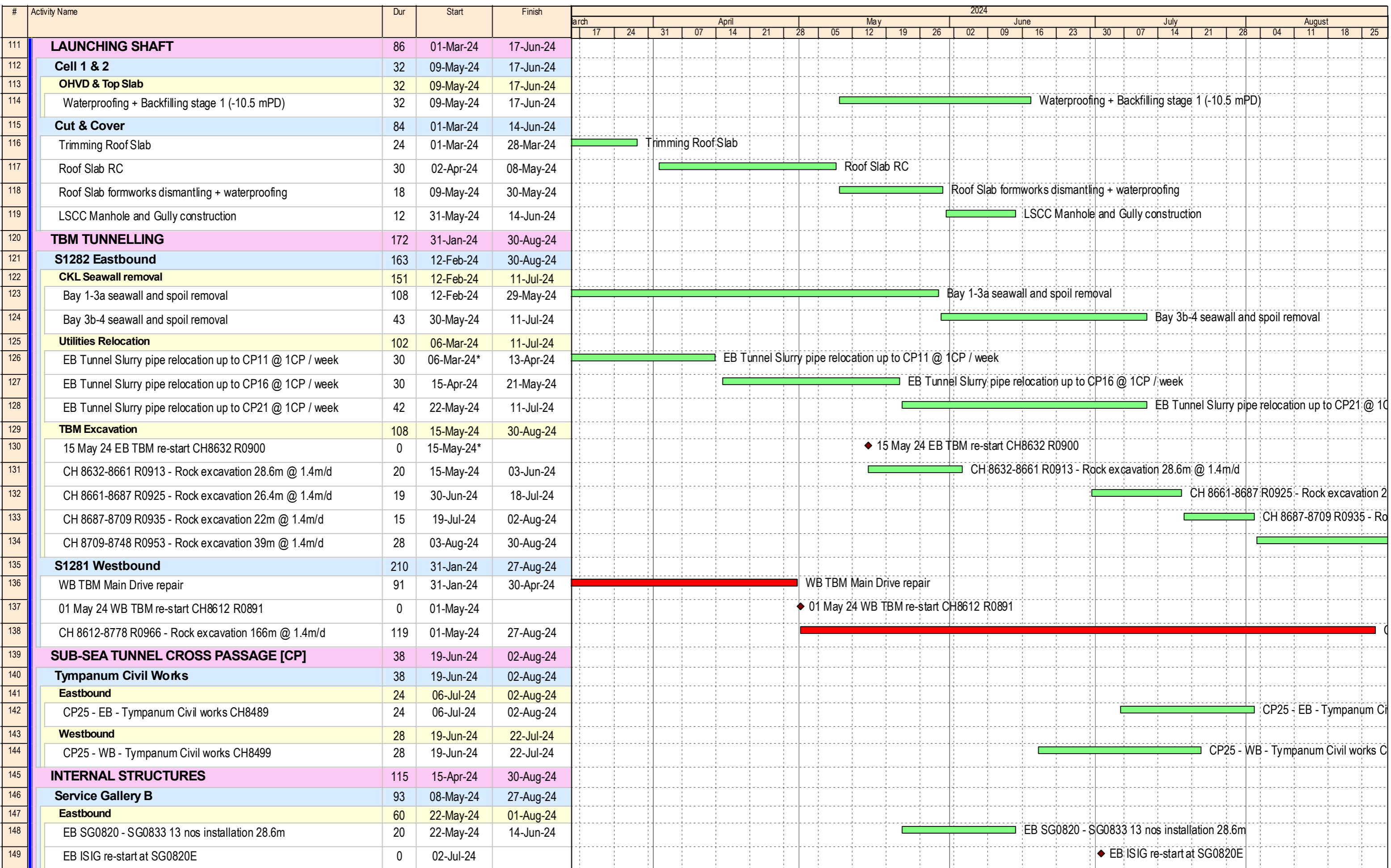
- ◆ Milestone
- █ Planned Bar
- █ Critical Bar

**ED/2018/04 Trunk Road T2 and Infrastructure Works
 for Developments at South Apron**

Three Months Rolling Programme (Apr-24)



Date	Revision	Checked	Approved
31-Jan-24	Rev. A	SPa	



- ◆ Milestone
- ▬ Planned Bar
- ▬ Critical Bar

ED/2018/04 Trunk Road T2 and Infrastructure Works
for Developments at South Apron

Three Months Rolling Programme (Apr-24)



Date	Revision	Checked	Approved
31-Jan-24	Rev. A	SPa	

#	Activity Name	Dur	Start	Finish	2024																							
					March			April				May				June				July				August				
					17	24	31	07	14	21	28	05	12	19	26	02	09	16	23	30	07	14	21	28	04	11	18	25
308	3rd section CH7607-8107 - (500m) WB CPS & NCPS + EB CPS	130	15-Mar-24	22-Aug-24																								
309	E&M Installation (BYME)	130	15-Mar-24	22-Aug-24																								
310	CP side	78	27-Mar-24	04-Jul-24																								
311	1st Fixing	24	27-Mar-24	27-Apr-24																								
312	E&M Bracket installation	24	27-Mar-24	27-Apr-24																								
313	2nd Fixing	54	29-Apr-24	04-Jul-24																								
314	Cable Laying - CPS	10	29-Apr-24	10-May-24																								
315	Cable Fixing - CPS	24	11-May-24	08-Jun-24																								
316	Cable Joint works - CPS	20	11-Jun-24	04-Jul-24																								
317	OHVD Soffit	130	15-Mar-24	22-Aug-24																								
318	1st Fixing	52	15-Mar-24	21-May-24																								
319	OHVD Soffit Fire Board completion (BTP)	0		15-Mar-24*																								
320	Black paint painting	6	08-Apr-24	13-Apr-24																								
321	Linear Heat Detection Cable bracket, Containment Installation - (30	15-Apr-24	21-May-24																								
322	2nd Fixing	38	11-Jun-24	25-Jul-24																								
323	Tunnel Damper Wiring Works - OHVD	30	11-Jun-24	16-Jul-24																								
324	Final Circuit Installation - OHVD	24	27-Jun-24	25-Jul-24																								
325	Final Fixing	24	26-Jul-24	22-Aug-24																								
326	Tunnel Lighting Installation - OHVD	24	26-Jul-24	22-Aug-24																								
327	Non CP side	60	30-May-24	09-Aug-24																								
328	1st Fixing	12	30-May-24	13-Jun-24																								
329	NCPS Fire Board completion	0		13-Jun-24																								
330	E&M Bracket	12	30-May-24	13-Jun-24																								
331	2nd Fixing	48	14-Jun-24	09-Aug-24																								
332	Cable Laying - NCPS	10	14-Jun-24	25-Jun-24																								
333	Cable Fixing - NCPS	14	26-Jun-24	12-Jul-24																								
334	Smartone / CSL / GOFS by others	24	13-Jul-24	09-Aug-24																								
335	5th section CH8550-8979 - (426m) WB & EB CPS + NCPS	24	14-Mar-24	15-Apr-24																								
336	E&M Installation (BYME)	24	14-Mar-24	15-Apr-24																								
337	Non CP side	24	14-Mar-24	15-Apr-24																								
338	1st Fixing	24	14-Mar-24	15-Apr-24																								
339	NCPS Fire Board completion	0		14-Mar-24*																								
340	E&M Bracket	24	14-Mar-24	15-Apr-24																								
341	Sub-sea Eastbound NCPS	72	31-May-24	24-Aug-24																								
342	1st section CH6703-7109 - (406m)	72	31-May-24	24-Aug-24																								
343	E&M Installation (BYME)	72	31-May-24	24-Aug-24																								
344	Non CP side	72	31-May-24	24-Aug-24																								
345	1st Fixing	24	31-May-24	28-Jun-24																								
346	E&M Bracket	24	31-May-24	28-Jun-24																								
347	2nd Fixing	48	29-Jun-24	24-Aug-24																								
348	Cable Laying - NCPS	10	29-Jun-24	11-Jul-24																								
349	Cable Fixing - NCPS	14	12-Jul-24	27-Jul-24																								

- ◆ Milestone
- Planned Bar
- Critical Bar

**ED/2018/04 Trunk Road T2 and Infrastructure Works
for Developments at South Apron**

Three Months Rolling Programme (Apr-24)



Date	Revision	Checked	Approved
31-Jan-24	Rev. A	SPa	

#	Activity Name	Dur	Start	Finish	2024																											
					March			April				May				June				July				August								
					17	24	31	07	14	21	28	05	12	19	26	02	09	16	23	30	07	14	21	28	04	11	18	25				
350	Cable Joint works - NCPS	20	29-Jul-24	20-Aug-24																												
351	Smartone / CSL / GOFS by others	24	29-Jul-24	24-Aug-24																												
352	2nd section CH7109-7607 - (498m)	10	14-Aug-24	24-Aug-24																												
353	E&M Installation (BYME)	10	14-Aug-24	24-Aug-24																												
354	Non CP side	10	14-Aug-24	24-Aug-24																												
355	2nd Fixing	10	14-Aug-24	24-Aug-24																												
356	Cable Laying - NCPS	10	14-Aug-24	24-Aug-24																												
357	Tunnel Cladding	60	20-Jun-24	29-Aug-24																												
358	EB CPS + WB CPS/NCPS CH6640-7109 Cladding Frame installation	30	20-Jun-24	25-Jul-24																												
359	EB CPS + WB CPS/NCPS CH7109-7607 Cladding Frame installation	30	03-Jul-24	06-Aug-24																												
360	EB CPS + WB CPS/NCPS CH7607-8109 Cladding Frame installation	30	26-Jul-24	29-Aug-24																												

- ◆ Milestone
- ▬ Planned Bar
- ▬ Critical Bar

ED/2018/04 Trunk Road T2 and Infrastructure Works
for Developments at South Apron

Three Months Rolling Programme (Apr-24)



Date	Revision	Checked	Approved
31-Jan-24	Rev.A	SPa	

Activity ID	Activity Name	Original Duration	Early Start	Early Finish	Late Start	Late Finish	Actual Start	Actual Finish	Predecessor Details	2024			
										Mar 27	Apr 28	May 29	Jun 30
Trunk Road T2 - Traffic Control & Surveillance System & Associated Works		433	01-Apr-24	09-Jan-25	03-Aug-23	31-Oct-26	01-Mar-23						
Access Dates		57	01-Apr-24	28-May-24	23-May-24	24-Sep-26							
AC1000	Portion 1 - South Apron Up to SUS	0	01-Apr-24		27-May-24								
AC1010	Portion 2 - LSCC, WVB & Adit, EVB	0	01-Apr-24		24-Sep-26								
AC1020	Portion 3 - CKL Branch Tunnel in TKO-LTT Site	0	01-Apr-24		04-Jan-25								
AC1030	Portion 4 - TKO-LTT (LT Interchange)	0	01-Apr-24		23-May-24								
AC1050	Portion 2 - LS - CKL Tunnel CH 6+568 to CH 7+100	0	01-Apr-24		28-Sep-24								
AC1040	Underpass S21	0	04-Apr-24		26-Apr-25								
AC1060	Portion 2 - LS - CKL Tunnel CH 7+100 to CH 7+600	0	13-Apr-24		29-Aug-24								
AC1070	Portion 2 - LS - CKL Tunnel CH 7+600 to CH 8+100	0	28-May-24		15-Oct-24								
Summary by Cost Center		433	01-Apr-24	09-Jan-25	03-Aug-23	31-Oct-26	01-Mar-23						
Cost Center B - Central System		273	01-Apr-24	26-Sep-24	01-Nov-23	11-Apr-25	01-Aug-23						
SC1060	Configuration for Central System	76	01-Apr-24	20-Apr-24	31-Aug-24	31-Aug-24	01-Aug-23		EM1150: SS				
SC1050	FAT of Central System	59	01-Apr-24	20-May-24	01-Nov-23	30-Sep-24	31-Oct-23		EM1150: FS				
SC1070	SCT Plan Submission & Approval for Central System	84	28-May-24	04-Sep-24	02-Dec-24	14-Mar-25			DS2940: SS				
SC1080	Site Installation of Central System	64	28-May-24	12-Aug-24	08-Oct-24	17-Feb-25			SW1100: SS, SW1120: SS, SW1960: SS, SW1090: SS, SW1670: SS, SW1770: SS				
SC1090	SAT Plan Submission & Approval for Central System	78	26-Jun-24	26-Sep-24	07-Jan-25	11-Apr-25			DS3500: SS				
Cost Center C - Traffic Control Devices		111	01-Apr-24	30-Jun-24	16-Aug-24	16-Aug-24	31-Aug-23						
SC1150	Installation Drawing Preparation, Submission & Approval for Traffic Control Devices	72	01-Apr-24	26-Apr-24	16-Aug-24	16-Aug-24	31-Aug-23		DS5890: SS				
SC1190	Equipment Manufacturing & Delivery for Traffic Control Devices	135	01-Apr-24	30-Jun-24	16-Aug-24	16-Aug-24	16-Sep-23		EM1320: SS				
Cost Center D - Communication System		222	01-Apr-24	12-Aug-24	08-Oct-24	14-Mar-25	01-Oct-23						
SC1320	Equipment Manufacturing & Delivery for Communication System	104					01-Oct-23	07-Mar-24	EM1040: SS				
SC1310	FAT of Communication System	10					29-Feb-24	07-Mar-24	EM1040: FS				
SC1340	SCT Plan Submission & Approval for Communication System	84	01-Apr-24	12-Jul-24	24-Oct-24	14-Mar-25			DS3020: SS				
SC1350	SAT Plan Submission & Approval for Communication System	80	16-Apr-24	22-Jul-24	07-Nov-24	13-Feb-25			DS3580: SS				
SC1330	Site Installation of Communication System	56	06-Jun-24	12-Aug-24	08-Oct-24	17-Feb-25			SW1100: SS, SW1120: SS, SW1960: SS				
Cost Center E - CCTV System		383	01-Apr-24	09-Jan-25	01-Nov-23	31-Oct-26	01-Mar-23						
SC1410	Installation Drawing Preparation, Submission & Approval for CCTV System	99	01-Apr-24	26-Apr-24	31-Oct-26	31-Oct-26	01-Mar-23		DS5970: SS				
SC1450	Equipment Manufacturing & Delivery for CCTV System	89	01-Apr-24	24-Apr-24	11-Aug-24	11-Aug-24	01-Aug-23		EM1050: SS				
SC1440	FAT of CCTV System	96	01-Apr-24	26-Apr-24	01-Nov-23	13-Aug-24	31-Oct-23		EM1050: FS				
SC1430	FAT Plan Submission & Approval for CCTV System	72	01-Apr-24	24-Apr-24	10-Aug-24	10-Aug-24	13-Dec-23		DS4050: SS				
SC1460	SCT Plan Submission & Approval for CCTV System	84	01-Apr-24	12-Jul-24	03-Sep-24	09-Jan-25			DS3060: SS				
SC1480	SAT Plan Submission & Approval for CCTV System	84	30-May-24	06-Sep-24	01-Nov-24	12-Feb-25			DS3620: SS				
SC1470	Site Installation of CCTV System	162	28-Jun-24	09-Jan-25	10-Sep-24	05-Mar-25			SW1060: SS, SW1940: SS				
Cost Center F - PABX System		305	01-Apr-24	07-Oct-24	08-Oct-24	24-Apr-25	27-Jul-23						
SC1560	Installation Drawing Preparation, Submission & Approval for PABX System	68	01-Apr-24	26-Apr-24	08-Oct-24	08-Oct-24	27-Jul-23		DS6010: SS				
SC1580	Equipment Manufacturing & Delivery for PABX System	105					01-Aug-23	19-Mar-24	EM1060: SS				
SC1570	FAT of PABX System	10					18-Mar-24	19-Mar-24	EM1060: FS				
SC1600	SCT Plan Submission & Approval for PABX System	84	01-Apr-24	12-Jul-24	18-Oct-24	12-Mar-25			DS3100: SS				
SC1610	SAT Plan Submission & Approval for PABX System	84	28-Jun-24	07-Oct-24	13-Jan-25	24-Apr-25			DS3660: SS				
Cost Center G - ET System		200	01-Apr-24	21-Sep-24	22-Jun-24	12-Mar-25	01-Aug-23						
SC1710	Equipment Manufacturing & Delivery for ET System	105					01-Aug-23	12-Mar-24	EM1070: SS				
SC1700	FAT of ET System	10					11-Mar-24	12-Mar-24	EM1070: FS				

Activity ID	Activity Name	Original Duration	Early Start	Early Finish	Late Start	Late Finish	Actual Start	Actual Finish	Predecessor Details	2024			
										Mar 27	Apr 28	May 29	Jun 30
SC1690	Installation Drawing Preparation, Submission & Approval for ET System	72	01-Apr-24	27-Jun-24	22-Jun-24	27-Dec-24			DS6050: SS				
SC1730	SCT Plan Submission & Approval for ET System	84	01-Apr-24	12-Jul-24	17-Sep-24	11-Jan-25			DS3140: SS				
SC1740	SAT Plan Submission & Approval for ET System	84	14-Jun-24	21-Sep-24	29-Nov-24	12-Mar-25			DS3700: SS				
Cost Center H - PA System		305	01-Apr-24	07-Oct-24	23-Sep-24	10-Apr-25	31-Aug-23						
SC1820	Installation Drawing Preparation, Submission & Approval for PA System	72	01-Apr-24	26-Apr-24	23-Sep-24	23-Sep-24	31-Aug-23		DS6090: SS				
SC1850	SCT Plan Submission & Approval for PA System	84	01-Apr-24	12-Jul-24	03-Oct-24	12-Feb-25			DS3180: SS				
SC1870	SAT Plan Submission & Approval for PA System	84	28-Jun-24	07-Oct-24	28-Dec-24	10-Apr-25			DS3740: SS				
Cost Center I - Radio System		269	01-Apr-24	07-Oct-24	01-Feb-24	08-Mar-25	01-Aug-23						
SC1970	Equipment Manufacturing & Delivery for Radio System	119	01-Apr-24	23-Apr-24	14-Oct-24	14-Oct-24	01-Aug-23		EM1090: SS				
SC1950	FAT Plan Submission & Approval for Radio System	60	01-Apr-24	23-Apr-24	14-Oct-24	14-Oct-24	28-Dec-23		DS4350: SS				
SC1960	FAT of Radio System	14	01-Apr-24	25-Apr-24	01-Feb-24	16-Oct-24	31-Jan-24		EM1090: FS				
SC1930	Installation Drawing Preparation, Submission & Approval for Radio System	60	01-Apr-24	13-Jun-24	22-Jul-24	23-Oct-24			DS6130: SS				
SC1980	SCT Plan Submission & Approval for Radio System	84	01-Apr-24	12-Jul-24	27-Aug-24	08-Mar-25			DS3220: SS				
SC2000	SAT Plan Submission & Approval for Radio System	84	28-Jun-24	07-Oct-24	22-Nov-24	05-Mar-25			DS3780: SS				
Cost Center J - Detection System		202	01-Apr-24	12-Jul-24	01-Nov-23	31-Oct-26	24-May-23						
SC2060	Installation Drawing Preparation, Submission & Approval for Detection System	124	01-Apr-24	12-Apr-24	31-Oct-26	31-Oct-26	24-May-23		DS6170: SS				
SC2100	Equipment Manufacturing & Delivery for Detection System	90	01-Apr-24	20-Jun-24	11-Aug-24	11-Aug-24	01-Aug-23		EM1100: SS				
SC2090	FAT of Detection System	87	01-Apr-24	22-Jun-24	01-Nov-23	13-Aug-24	31-Oct-23		EM1100: FS				
SC2080	FAT Plan Submission & Approval for Detection System	66	01-Apr-24	20-Jun-24	24-May-24	10-Aug-24			DS4450: SS				
SC2110	SCT Plan Submission & Approval for Detection System	84	01-Apr-24	12-Jul-24	09-Sep-24	17-Jan-25			DS3260: SS				
Cost Center K - Manual Fallback System		186	01-Apr-24	13-Sep-24	09-Sep-24	14-Mar-25	01-Aug-23						
SC2220	FAT of Manual Fallback System	60	01-Apr-24	30-Apr-24	09-Sep-24	09-Sep-24	01-Aug-23		EM1640: SS				
SC2190	Installation Drawing Preparation, Submission & Approval for Manual Fallback System	60	01-Apr-24	26-Apr-24	08-Jan-25	08-Jan-25	31-Aug-23		DS6210: SS				
SC2200	Post FAT Configuration for Manual Fallback System	90	01-May-24	29-Jul-24	10-Sep-24	08-Jan-25			EM1540: FS				
SC2250	SCT Plan Submission & Approval for Manual Fallback System	84	08-May-24	16-Aug-24	17-Sep-24	14-Mar-25			DS3300: SS				
SC2270	SAT Plan Submission & Approval for Manual Fallback System	84	06-Jun-24	13-Sep-24	18-Oct-24	25-Jan-25			DS3860: SS				
Cost Center L - Speed Enforcement System		108	01-Apr-24	09-Aug-24	23-Sep-24	11-Apr-25							
SC2340	Installation Drawing Preparation, Submission & Approval for Speed Enforcement System	60	01-Apr-24	13-Jun-24	23-Sep-24	01-Mar-25			DS6290: SS				
SC2370	SCT Plan Submission & Approval for Speed Enforcement System	84	01-Apr-24	12-Jul-24	30-Nov-24	22-Mar-25			DS3380: SS				
SC2380	Reliability Test Plan Submission & Approval for Speed Enforcement System	84	30-Apr-24	09-Aug-24	30-Dec-24	11-Apr-25			DS3940: SS				
Cost Center M - Power Distribution System		282	01-Apr-24	07-Sep-24	28-Sep-23	21-Nov-24	30-Aug-23						
SC2460	Installation Drawing Preparation, Submission & Approval for Power Distribution System	60	01-Apr-24	26-Apr-24	27-Jun-24	27-Jun-24	30-Aug-23		DS6370: SS				
SC2470	Equipment Manufacturing & Delivery for Power Distribution System	98	01-Apr-24	30-May-24	28-Sep-23	12-Aug-24	27-Sep-23		DS2592: FS				
SC2490	SCT Plan Submission & Approval for Power Distribution System	84	31-May-24	07-Sep-24	13-Aug-24	21-Nov-24			DS3420: SS				
Cost Center N - Government Optical Fibre System		332	01-Apr-24	07-Sep-24	03-Aug-23	28-Apr-25	02-Aug-23						
SC2560	Equipment Manufacturing & Delivery for Government Optical Fibre System	111	01-Apr-24	30-May-24	03-Aug-23	19-Nov-24	02-Aug-23		DS2650: FS 200				
SC2550	Installation Drawing Preparation, Submission & Approval for Government Optical Fibre System	60	01-Apr-24	13-Jun-24	07-Sep-24	19-Nov-24			DS6330: SS				
SC2580	SCT Plan Submission & Approval for Government Optical Fibre System	84	31-May-24	07-Sep-24	16-Jan-25	28-Apr-25			DS3460: SS				
Operation Facilities		125	01-Apr-24	14-Jul-24	22-May-24	20-Jan-25	01-Aug-23						
SC2660	FAT of Operation Facilities	78	01-Apr-24	14-Jul-24	31-Aug-24	31-Aug-24	01-Aug-23		EM1560: SS				
SC2630	Installation Drawing Preparation, Submission & Approval for Operation Facilities	60	01-Apr-24	13-Jun-24	09-Nov-24	20-Jan-25			DS6250: SS				
SC2650	FAT Plan Submission & Approval for Operation Facilities	81	01-Apr-24	09-Jul-24	22-May-24	26-Aug-24			DS4600: SS				
Design & Submissions		304	01-Apr-24	17-Jun-24	13-Jun-24	25-Jun-25	29-Aug-23						



GTECH Services (Hong Kong) Limited

■ Remaining Work
 ■ Actual Work
 ■ Critical Activity
 ◆ Milestone

Date	Revision	Checked	Approved
31-Mar-24	Rev. 0	MY	

Activity ID	Activity Name	Original Duration	Early Start	Early Finish	Late Start	Late Finish	Actual Start	Actual Finish	Predecessor Details	2024			
										Mar 27	Apr 28	May 29	Jun 30
FSP Submissions (42 Working Days after Commencement of FSP)		304	01-Apr-24	17-Jun-24	13-Jun-24	25-Jun-25	29-Aug-23						
FSP Batch 1 Submission		304	01-Apr-24	17-Jun-24	13-Jun-24	25-Jun-25	29-Aug-23						
Central System		304	01-Apr-24	17-Jun-24	13-Jun-24	25-Jun-25	29-Aug-23						
Traffic Plan Review & Combine		140	01-Apr-24	17-Jun-24	13-Jun-24	26-Aug-24	28-Dec-23						
DS7300	Traffic Plan Review & Combine Workshop	140	01-Apr-24	17-Jun-24	13-Jun-24	26-Aug-24	28-Dec-23		DS1830: FS 22				
IT Security Risk Assessment Plan		30	01-Apr-24	01-Apr-24	25-Jun-25	25-Jun-25	29-Aug-23						
DS7440	Approval on IT Security Risk Assessment Plan	30	01-Apr-24	01-Apr-24	25-Jun-25	25-Jun-25	29-Aug-23		DS7430: FS				
Interface Coordination & Integration with Other Parties		96	01-Apr-24	26-Jul-24	11-May-26	03-Oct-26							
Interfacing Coordination with CKR (KTE)		90	01-Apr-24	19-Jul-24	17-Jun-26	03-Oct-26							
Detail Interfacing Management Plan (DIMP)		90	01-Apr-24	19-Jul-24	17-Jun-26	03-Oct-26							
DS6610	Prepare & Submit DIMP with CKR (KTE)	73	01-Apr-24	28-Jun-24	17-Jun-26	11-Sep-26			DS6600: FS 96				
DS6620	Comment on DIMP with CKR (KTE)	17	29-Jun-24	19-Jul-24	12-Sep-26	03-Oct-26			DS6610: FS				
Interfacing Coordination with CKR (BEM)		90	01-Apr-24	19-Jul-24	17-Jun-26	03-Oct-26							
Detail Interfacing Management Plan (DIMP)		90	01-Apr-24	19-Jul-24	17-Jun-26	03-Oct-26							
DS6690	Prepare & Submit DIMP with CKR (BEM)	73	01-Apr-24	28-Jun-24	17-Jun-26	11-Sep-26			DS6600: FS 96				
DS6700	Comment on DIMP with CKR (BEM)	17	29-Jun-24	19-Jul-24	12-Sep-26	03-Oct-26			DS6690: FS				
Interfacing Coordination with TKO-LTT (Civil)		76	01-Apr-24	03-Jul-24	12-Jun-26	10-Sep-26							
Detail Interfacing Management Plan (DIMP)		76	01-Apr-24	03-Jul-24	12-Jun-26	10-Sep-26							
DS6770	Prepare & Submit DIMP with TKO-LTT (Civil)	76	01-Apr-24	03-Jul-24	12-Jun-26	10-Sep-26			DS6760: FS 96				
Interfacing Coordination with TKO-LTT (TCSS)		76	01-Apr-24	03-Jul-24	16-Jun-26	14-Sep-26							
Detail Interfacing Management Plan (DIMP)		76	01-Apr-24	03-Jul-24	16-Jun-26	14-Sep-26							
DS6850	Prepare & Submit DIMP with TKO-LTT (TCSS)	76	01-Apr-24	03-Jul-24	16-Jun-26	14-Sep-26			DS6840: FS 108				
Interfacing Coordination with T2		96	01-Apr-24	26-Jul-24	11-May-26	02-Sep-26							
Preliminary Interfacing Management Plan (PIMP)		72	01-Apr-24	27-Jun-24	11-May-26	05-Aug-26							
DS6890	Prepare & Submit PIMP with T2	24	01-Apr-24	29-Apr-24	11-May-26	08-Jun-26			DS2680: FS 211				
DS6900	Comment on PIMP with T2	24	30-Apr-24	29-May-24	09-Jun-26	08-Jul-26			DS6890: FS				
DS6910	Resubmit PIMP with T2	12	30-May-24	13-Jun-24	09-Jul-26	22-Jul-26			DS6900: FS				
DS6920	Approval of PIMP with T2	12	14-Jun-24	27-Jun-24	23-Jul-26	05-Aug-26			DS6910: FS				
Detail Interfacing Management Plan (DIMP)		24	28-Jun-24	26-Jul-24	06-Aug-26	02-Sep-26							
DS6930	Prepare & Submit DIMP with T2	24	28-Jun-24	26-Jul-24	06-Aug-26	02-Sep-26			DS6920: FS				
Drawing & Installation Method Statement Submissions		188	01-Apr-24	11-Jul-24	06-Apr-24	31-Oct-26	10-Aug-23						
Installation Drawing Submission		185	01-Apr-24	08-Jul-24	06-Apr-24	31-Oct-26	08-Sep-23						
DS2695	Prepare & Submit Schedule of Installation Drawing	30	01-Apr-24	07-May-24	06-Apr-24	11-May-24			DS1050: FS 103				
DS2705	Approval of Schedule of Installation Drawing	50	08-May-24	08-Jul-24	13-May-24	12-Jul-24			DS2695: FS				
Traffic Control Devices		125	01-Apr-24	26-Apr-24	23-Jul-24	16-Aug-24	07-Oct-23						
DS5910	Resubmit Installation Drawing for Traffic Control Devices	12	01-Apr-24	12-Apr-24	23-Jul-24	02-Aug-24	07-Oct-23		DS5900: FS				
DS5920	Approval of Installation Drawing for Traffic Control Devices	12	13-Apr-24	26-Apr-24	03-Aug-24	16-Aug-24			DS5910: FS, SC1150: FF				
CCTV System		58	01-Apr-24	26-Apr-24	06-Oct-26	31-Oct-26	13-Dec-23						
DS8020	Resubmit Installation Drawing for CCTV System	26	01-Apr-24	12-Apr-24	06-Oct-26	16-Oct-26	13-Dec-23		DS8010: FS				
DS8030	Approval of Installation Drawing for CCTV System	12	13-Apr-24	26-Apr-24	17-Oct-26	31-Oct-26			DS8020: FS, SC1410: FF				
PABX System		127	01-Apr-24	26-Apr-24	11-Sep-24	08-Oct-24	08-Sep-23						
DS6030	Resubmit Installation Drawing for PABX System	12	01-Apr-24	12-Apr-24	11-Sep-24	23-Sep-24	08-Sep-23		DS6020: FS				
DS6040	Approval of Installation Drawing for PABX System	12	13-Apr-24	26-Apr-24	24-Sep-24	08-Oct-24			DS6030: FS, SC1560: FF				
ET System		72	01-Apr-24	27-Jun-24	22-Jun-24	27-Dec-24							
DS6050	Prepare & Submit Installation Drawing for ET System	24	01-Apr-24	29-Apr-24	22-Jun-24	20-Jul-24			DS2770: SS 19				
DS6060	Comment on Installation Drawing for ET System	24	30-Apr-24	29-May-24	01-Nov-24	28-Nov-24			DS6050: FS				
DS6070	Resubmit Installation Drawing for ET System	12	30-May-24	13-Jun-24	29-Nov-24	12-Dec-24			DS6060: FS				
DS6080	Approval of Installation Drawing for ET System	12	14-Jun-24	27-Jun-24	13-Dec-24	27-Dec-24			DS6070: FS, SC1690: FF				
PA System		125	01-Apr-24	26-Apr-24	28-Aug-24	23-Sep-24	12-Oct-23						
DS6110	Resubmit Installation Drawing for PA System	12	01-Apr-24	12-Apr-24	28-Aug-24	07-Sep-24	12-Oct-23		DS6100: FS				
DS6120	Approval of Installation Drawing for PA System	12	13-Apr-24	26-Apr-24	09-Sep-24	23-Sep-24			DS6110: FS, SC1820: FF				
Radio System		60	01-Apr-24	13-Jun-24	22-Jul-24	23-Oct-24							
DS6130	Prepare & Submit Installation Drawing for Radio System	12	01-Apr-24	15-Apr-24	22-Jul-24	03-Aug-24			DS2154: FS				
DS6140	Comment on Installation Drawing for Radio System	24	16-Apr-24	14-May-24	26-Aug-24	23-Sep-24			DS6130: FS				



GTECH Services (Hong Kong) Limited

■ Remaining Work
 ■ Actual Work
 ■ Critical Activity
 ◆ Milestone

Date	Revision	Checked	Approved
31-Mar-24	Rev. 0	MY	

Activity ID	Activity Name	Original Duration	Early Start	Early Finish	Late Start	Late Finish	Actual Start	Actual Finish	Predecessor Details	2024			
										Mar 27	Apr 28	May 29	Jun 30
DS6150	Resubmit Installation Drawing for Radio System	12	16-May-24	29-May-24	24-Sep-24	08-Oct-24			DS6140: FS				
DS6160	Approval of Installation Drawing for Radio System	12	30-May-24	13-Jun-24	09-Oct-24	23-Oct-24			DS6150: FS, SC1930: FF				
Detection System		12	01-Apr-24	12-Apr-24	21-Oct-26	31-Oct-26	26-Nov-23						
DS6200	Approval of Installation Drawing for Detection System	12	01-Apr-24	12-Apr-24	21-Oct-26	31-Oct-26	26-Nov-23		DS6190: FS, SC2060: FF				
Manual Fallback Control System		34	01-Apr-24	26-Apr-24	12-Dec-24	08-Jan-25	07-Oct-23						
DS6230	Resubmit Installation Drawing for Manual Fallback Control System	12	01-Apr-24	12-Apr-24	12-Dec-24	23-Dec-24	07-Oct-23		DS6220: FS				
DS6240	Approval of Installation Drawing for Manual Fallback Control System	12	13-Apr-24	26-Apr-24	24-Dec-24	08-Jan-25			DS6230: FS, SC2190: FF				
Operation Facility		60	01-Apr-24	13-Jun-24	09-Nov-24	20-Jan-25							
DS6250	Prepare & Submit Installation Drawing for Operation Facility	12	01-Apr-24	15-Apr-24	09-Nov-24	22-Nov-24			DS2532: FS				
DS6260	Comment on Installation Drawing for Operation Facility	24	16-Apr-24	14-May-24	23-Nov-24	20-Dec-24			DS6250: FS				
DS6270	Resubmit Installation Drawing for Operation Facility	12	16-May-24	29-May-24	21-Dec-24	06-Jan-25			DS6260: FS				
DS6280	Approval of Installation Drawing for Operation Facility	12	30-May-24	13-Jun-24	07-Jan-25	20-Jan-25			DS6270: FS, SC2630: FF				
Speed Enforcement System		60	01-Apr-24	13-Jun-24	23-Sep-24	01-Mar-25							
DS6290	Prepare & Submit Installation Drawing for Speed Enforcement System	12	01-Apr-24	15-Apr-24	23-Sep-24	07-Oct-24			DS2472: FS				
DS6300	Comment on Installation Drawing for Speed Enforcement System	24	16-Apr-24	14-May-24	02-Jan-25	01-Feb-25			DS6290: FS				
DS6310	Resubmit Installation Drawing for Speed Enforcement System	12	16-May-24	29-May-24	03-Feb-25	15-Feb-25			DS6300: FS				
DS6320	Approval of Installation Drawing for Speed Enforcement System	12	30-May-24	13-Jun-24	17-Feb-25	01-Mar-25			DS6310: FS, SC2340: FF				
Government Optical Fibre System		60	01-Apr-24	13-Jun-24	07-Sep-24	19-Nov-24							
DS6330	Prepare & Submit Installation Drawing for Government Optical Fibre System	12	01-Apr-24	15-Apr-24	07-Sep-24	21-Sep-24			DS2650: FS, DS2592: SS				
DS6340	Comment on Installation Drawing for Government Optical Fibre System	24	16-Apr-24	14-May-24	23-Sep-24	22-Oct-24			DS6330: FS				
DS6350	Resubmit Installation Drawing for Government Optical Fibre System	12	16-May-24	29-May-24	23-Oct-24	05-Nov-24			DS6340: FS				
DS6360	Approval of Installation Drawing for Government Optical Fibre System	12	30-May-24	13-Jun-24	06-Nov-24	19-Nov-24			DS6350: FS, SC2550: FF				
Power Distribution System		64	01-Apr-24	26-Apr-24	01-Jun-24	27-Jun-24	20-Jan-24						
DS6401	Resubmit Installation Drawing for Power Distribution System	12	01-Apr-24	12-Apr-24	01-Jun-24	13-Jun-24	20-Jan-24		DS6400: FS				
DS6402	Approval of Installation Drawing for Power Distribution System	12	13-Apr-24	26-Apr-24	14-Jun-24	27-Jun-24			DS6401: FS, SC2460: FF				
Installation Method Statement Submission		160	01-Apr-24	11-Jul-24	23-May-24	31-Dec-24	10-Aug-23						
Traffic Control Devices		72	01-Apr-24	27-Jun-24	23-May-24	16-Aug-24							
DS2780	Prepare & Submit Installation Method Statement for Installation of TCSS Field Equipment	24	01-Apr-24	29-Apr-24	23-May-24	20-Jun-24			DS5890: FS 2				
DS2790	Comment on Installation Method Statement for Installation of TCSS Field Equipment	24	30-Apr-24	29-May-24	21-Jun-24	19-Jul-24			DS2780: FS				
DS2800	Resubmit Installation Method Statement for Installation of TCSS Field Equipment	12	30-May-24	13-Jun-24	20-Jul-24	02-Aug-24			DS2790: FS				
DS2810	Approval of Installation Method Statement for Installation of TCSS Field Equipment	12	14-Jun-24	27-Jun-24	03-Aug-24	16-Aug-24			DS2800: FS				
CCTV Camera & VD Camera		72	01-Apr-24	27-Jun-24	27-May-24	20-Aug-24							
DS6410	Prepare & Submit Installation Method Statement for CCTV Camera & VD Camera	24	01-Apr-24	29-Apr-24	27-May-24	24-Jun-24			DS5990: FS, DS6190: FS 2				
DS6420	Comment on Installation Method Statement for CCTV Camera & VD Camera	24	30-Apr-24	29-May-24	25-Jun-24	23-Jul-24			DS6410: FS				
DS6430	Resubmit Installation Method Statement for CCTV Camera & VD Camera	12	30-May-24	13-Jun-24	24-Jul-24	06-Aug-24			DS6420: FS				
DS6440	Approval of Installation Method Statement for CCTV Camera & VD Camera	12	14-Jun-24	27-Jun-24	07-Aug-24	20-Aug-24			DS6430: FS				
PABX, ET & PA Systems		72	09-Apr-24	05-Jul-24	29-Jun-24	23-Sep-24							
DS6450	Prepare & Submit Installation Method Statement for PABX, ET & PA Systems	24	09-Apr-24	07-May-24	29-Jun-24	27-Jul-24			DS6010: FS, DS6050: SS 6, DS6090: FS				
DS6460	Comment on Installation Method Statement for PABX, ET & PA Systems	24	08-May-24	05-Jun-24	29-Jul-24	24-Aug-24			DS6450: FS				

Activity ID	Activity Name	Original Duration	Early Start	Early Finish	Late Start	Late Finish	Actual Start	Actual Finish	Predecessor Details	2024			
										Mar 27	Apr 28	May 29	Jun 30
DS6470	Resubmit Installation Method Statement for PABX, ET & PA Systems	12	06-Jun-24	20-Jun-24	26-Aug-24	07-Sep-24			DS6460: FS				
DS6480	Approval of Installation Method Statement for PABX, ET & PA Systems	12	21-Jun-24	05-Jul-24	09-Sep-24	23-Sep-24			DS6470: FS				
Radio System		72	09-Apr-24	05-Jul-24	29-Jul-24	23-Oct-24							
DS6490	Prepare & Submit Installation Method Statement for Radio System	24	09-Apr-24	07-May-24	29-Jul-24	24-Aug-24			DS6130: SS 6				
DS6500	Comment on Installation Method Statement for Radio System	24	08-May-24	05-Jun-24	26-Aug-24	23-Sep-24			DS6490: FS				
DS6510	Resubmit Installation Method Statement for Radio System	12	06-Jun-24	20-Jun-24	24-Sep-24	08-Oct-24			DS6500: FS				
DS6520	Approval of Installation Method Statement for Radio System	12	21-Jun-24	05-Jul-24	09-Oct-24	23-Oct-24			DS6510: FS				
Power Distribution System		99	01-Apr-24	26-Apr-24	01-Jun-24	27-Jun-24	10-Aug-23						
DS6550	Resubmit Installation Method Statement for Power Distribution System	6	01-Apr-24	12-Apr-24	01-Jun-24	13-Jun-24	10-Aug-23		DS6540: FS				
DS6560	Approval of Installation Method Statement for Power Distribution System	12	13-Apr-24	26-Apr-24	14-Jun-24	27-Jun-24			DS6550: FS				
SEC System		24	13-Jun-24	11-Jul-24	03-Dec-24	31-Dec-24							
DS7380	Prepare & Submit Installation Method Statement for SEC System	24	13-Jun-24	11-Jul-24	03-Dec-24	31-Dec-24			DS6290: FS 47				
Detection System		72	01-Apr-24	27-Jun-24	27-May-24	20-Aug-24							
DS7470	Prepare & Submit Installation Method Statement for Detection System	24	01-Apr-24	29-Apr-24	27-May-24	24-Jun-24			DS5990: FS, DS6190: FS 2				
DS7480	Comment on Installation Method Statement for Detection System	24	30-Apr-24	29-May-24	25-Jun-24	23-Jul-24			DS7470: FS				
DS7490	Resubmit Installation Method Statement for Detection System	12	30-May-24	13-Jun-24	24-Jul-24	06-Aug-24			DS7480: FS				
DS7500	Approval of Installation Method Statement for Detection System	12	14-Jun-24	27-Jun-24	07-Aug-24	20-Aug-24			DS7490: FS				
FAT Plan Submissions, Equipment Procurement & Manufacturing		216	01-Apr-24	29-Jul-24	18-May-24	31-Oct-26	01-Aug-23						
CCTV System		46	01-Apr-24	03-May-24	19-Jul-24	20-Aug-24	02-Feb-24						
FAT Plan Submission		41	01-Apr-24	24-Apr-24	19-Jul-24	10-Aug-24	02-Feb-24						
DS4070	Resubmission of FAT Plan for CCTV System	12					02-Feb-24	06-Mar-24	DS4060: FS				
DS4080	Comment on FAT Plan/ Workshops (System Briefing & Comment Discussion)	12					07-Mar-24	26-Mar-24	DS4070: FS				
DS8140	Resubmission of FAT Plan for CCTV System	12	01-Apr-24	10-Apr-24	19-Jul-24	27-Jul-24	27-Mar-24		DS4080: FS				
DS8150	Approval of FAT Plan for CCTV System	12	11-Apr-24	24-Apr-24	29-Jul-24	10-Aug-24			DS8140: FS, SC1430: FF				
Equipment FAT & Manufacturing		7	25-Apr-24	03-May-24	12-Aug-24	20-Aug-24							
EM1480	FAT of CCTV System	2	25-Apr-24	26-Apr-24	12-Aug-24	13-Aug-24			SC1440: FF, EM1050: FS, SC1450: FS, DS8150: FS				
DS4090	Submit CCTV System FAT Test Report	1	03-May-24	03-May-24	20-Aug-24	20-Aug-24			EM1480: FS 6				
PABX System		141					01-Aug-23	21-Mar-24					
Equipment FAT & Manufacturing		141					01-Aug-23	21-Mar-24					
EM1060	Manufacturing & Delivery of PABX System	105					01-Aug-23	18-Mar-24	DS2750: FS, DS7570: FS				
EM1490	FAT of PABX System	10					19-Mar-24	19-Mar-24	DS4130: FS, SC1570: FF, EM1060: FS, SC1580: FS				
DS4140	Submit PABX System FAT Test Report	1					20-Mar-24	21-Mar-24	EM1490: FS 6				
ET System		85					01-Aug-23	15-Mar-24					
Equipment FAT & Manufacturing		85					01-Aug-23	15-Mar-24					
EM1070	Manufacturing & Delivery of ET System	105					01-Aug-23	11-Mar-24	DS2770: FS 118, DS7580: FS				
EM1500	FAT of ET System	10					12-Mar-24	12-Mar-24	DS4180: FS, SC1700: FF, EM1070: FS, SC1710: FS				
DS4190	Submit ET System FAT Test Report	1					15-Mar-24	15-Mar-24	EM1500: FS 6				
PA System		1					29-Feb-24	01-Mar-24					
Equipment FAT & Manufacturing		1					29-Feb-24	01-Mar-24					
DS4240	Submit PA System FAT Test Report	1					29-Feb-24	01-Mar-24	EM1510: FS 6				
Traffic Control Devices		96	01-Apr-24	30-Jun-24	18-May-24	16-Aug-24	10-Oct-23						
Equipment FAT & Manufacturing		96	01-Apr-24	30-Jun-24	18-May-24	16-Aug-24	10-Oct-23						
PVMS		85	01-Apr-24	30-Jun-24	18-May-24	16-Aug-24	10-Oct-23						



GTECH Services (Hong Kong) Limited

■ Remaining Work
 ■ Actual Work
 ■ Critical Activity
 ◆ Milestone

Date	Revision	Checked	Approved
31-Mar-24	Rev. 0	MY	

Activity ID	Activity Name	Original Duration	Early Start	Early Finish	Late Start	Late Finish	Actual Start	Actual Finish	Predecessor Details	2024			
										Mar 27	Apr 28	May 29	Jun 30
EM1030	Post-FAT Manufacturing & Delivery of Traffic Control Devices (PVMS)	85	01-Apr-24	30-Jun-24	18-May-24	16-Aug-24	10-Oct-23		DS4290: FF, SC1190: FF, EM1460: FS				
LED Signage		96	01-Apr-24	04-Jun-24	13-Jun-24	16-Aug-24	26-Feb-24						
EM1461	FAT of Traffic Control Devices (LED Signage)	13					26-Feb-24	01-Mar-24	EM1460: FS, EM1320: FS, SC1181: FS, DS8110: FS				
DS4291	Submit Traffic Control Devices FAT Test Report (LED Signage)	1					02-Mar-24	05-Mar-24	EM1461: FS				
DS8160	Resubmit Traffic Control Devices FAT Test Report (LED Signage)	1					06-Mar-24	11-Mar-24	DS4291: FS				
EM1650	Post-FAT Manufacturing & Delivery of Traffic Control Devices (LED Signage)	85	01-Apr-24	04-Jun-24	13-Jun-24	16-Aug-24	12-Mar-24		EM1461: FS, SC1190: FF, DS4291: FS, DS8160: FS				
Central System		55	01-Apr-24	27-May-24	13-Aug-24	07-Oct-24	20-Feb-24						
FAT Plan Submission		40	01-Apr-24	20-Apr-24	13-Aug-24	31-Aug-24	20-Feb-24						
DS8120	Resubmission of FAT Plan for Central System	12					20-Feb-24	26-Mar-24	DS4330: FS				
DS8130	Approval of FAT Plan for Central System	21	01-Apr-24	20-Apr-24	13-Aug-24	31-Aug-24	27-Mar-24		DS8120: FS				
Equipment FAT & Manufacturing		29	21-Apr-24	27-May-24	01-Sep-24	07-Oct-24							
EM1580	FAT of Central System	30	21-Apr-24	20-May-24	01-Sep-24	30-Sep-24			SC1050: FF, EM1150: FS, SC1060: FS, DS8130: FS				
DS4340	Submit Central System FAT Test Report	1	27-May-24	27-May-24	07-Oct-24	07-Oct-24			EM1580: FS 6				
Radio System		45	01-Apr-24	02-May-24	20-Sep-24	23-Oct-24	02-Feb-24						
FAT Plan Submission		38	01-Apr-24	23-Apr-24	20-Sep-24	14-Oct-24	02-Feb-24						
DS4370	Resubmission of FAT Plan for Radio System	12					02-Feb-24	29-Feb-24	DS4360: FS				
DS4380	Comment on FAT Plan/ Workshops (System Briefing & Comment Discussion)	12					01-Mar-24	25-Mar-24	DS4370: FS				
DS8200	Resubmission of FAT Plan for Radio System	12	01-Apr-24	09-Apr-24	20-Sep-24	27-Sep-24	26-Mar-24		DS4380: FS				
DS8210	Approval of FAT Plan for Radio System	12	10-Apr-24	23-Apr-24	28-Sep-24	14-Oct-24			DS8200: FS, SC1950: FF				
Equipment FAT & Manufacturing		7	24-Apr-24	02-May-24	15-Oct-24	23-Oct-24							
EM1520	FAT of Radio Distribution Network	2	24-Apr-24	25-Apr-24	15-Oct-24	16-Oct-24			EM1090: FS, SC1970: FS, SC1960: FF, DS8210: FS				
EM1610	FAT of Radio O&M (Mobile & Portable)	2	24-Apr-24	25-Apr-24	15-Oct-24	16-Oct-24			EM1090: FS, SC1970: FS, SC1960: FF, DS8210: FS				
DS4390	Submit Radio System FAT Test Report	1	02-May-24	02-May-24	23-Oct-24	23-Oct-24			EM1610: FS 6, EM1520: FS 6				
Communication System		125	01-Apr-24	11-Apr-24	22-Oct-26	31-Oct-26	01-Oct-23						
Equipment FAT & Manufacturing		125	01-Apr-24	11-Apr-24	22-Oct-26	31-Oct-26	01-Oct-23						
EM1040	Manufacturing & Delivery of Communication System	104					01-Oct-23	29-Feb-24	DS2350: FS 144, DS7630: FS, DS2352: FS				
EM1470	FAT of Communication System	10					07-Mar-24	07-Mar-24	DS4430: FS, EM1040: FS, SC1310: FF, SC1320: FS				
DS4440	Submit Communication System FAT Test Report	1					08-Mar-24	19-Mar-24	EM1470: FS 6				
DS8170	Comment on FAT Report	12					20-Mar-24	25-Mar-24	DS4440: FS				
DS8180	Submit Communication System FAT Test Report	1					26-Mar-24	27-Mar-24	DS8170: FS				
DS8190	Approval of FAT Report for Communication System	12	01-Apr-24	11-Apr-24	22-Oct-26	31-Oct-26	28-Mar-24		DS8180: FS				
Detection System		74	01-Apr-24	29-Jun-24	24-May-24	20-Aug-24							
FAT Plan Submission		66	01-Apr-24	20-Jun-24	24-May-24	10-Aug-24							
DS4450	Submission of Detection System FAT Plan	18	01-Apr-24	22-Apr-24	24-May-24	14-Jun-24			DS2232: FS				
DS4460	Comment on FAT Plan/ Workshops (System Briefing & Comment Discussion)	24	23-Apr-24	22-May-24	15-Jun-24	13-Jul-24			DS4450: FS				
DS4470	Resubmission of FAT Plan for Detection System	12	23-May-24	05-Jun-24	15-Jul-24	27-Jul-24			DS4460: FS				
DS4480	Approval of FAT Plan for Detection System	12	06-Jun-24	20-Jun-24	29-Jul-24	10-Aug-24			DS4470: FS, SC2080: FF				
Equipment FAT & Manufacturing		8	21-Jun-24	29-Jun-24	12-Aug-24	20-Aug-24							
EM1530	FAT of Detection System	2	21-Jun-24	22-Jun-24	12-Aug-24	13-Aug-24			DS4480: FS, SC2090: FF, EM1100: FS, SC2100: FS				
DS4490	Submit Detection System FAT Test Report	1	29-Jun-24	29-Jun-24	20-Aug-24	20-Aug-24			EM1530: FS 6				
Power Distribution System		89	01-Apr-24	30-May-24	14-Jun-24	12-Aug-24	01-Dec-23						
Equipment Manufacturing		89	01-Apr-24	30-May-24	14-Jun-24	12-Aug-24	01-Dec-23						
EM1620	Manufacturing & Delivery of Power Distribution System Equipment	89	01-Apr-24	30-May-24	14-Jun-24	12-Aug-24	01-Dec-23		SC2470: FF, DS7650: FS, DS2592: FS				



■ Remaining Work ◆ Milestone
■ Actual Work
■ Critical Activity

Date	Revision	Checked	Approved
31-Mar-24	Rev. 0	MY	

Activity ID	Activity Name	Original Duration	Early Start	Early Finish	Late Start	Late Finish	Actual Start	Actual Finish	Predecessor Details	2024			
										Mar 27	Apr 28	May 29	Jun 30
Government Optical Fibre System													
Equipment Manufacturing													
EM1630	Manufacturing & Delivery of Government Optical Fibre System Equipment	105	01-Apr-24	30-May-24	21-Sep-24	19-Nov-24	01-Dec-23		DS2650: FS 200, SC2560: FF, DS7660: FS				
Operation Facilities													
FAT Plan Submission													
DS4600	Submission of Operation Facility FAT Plan	24	01-Apr-24	29-Apr-24	22-May-24	19-Jun-24			DS2532: FS				
DS4610	Comment on FAT Plan/ Workshops (System Briefing & Comment Discussion)	24	30-Apr-24	29-May-24	20-Jun-24	18-Jul-24			DS4600: FS				
DS4620	Resubmission of FAT Plan for Operation Facility	12	30-May-24	13-Jun-24	19-Jul-24	01-Aug-24			DS4610: FS				
DS4630	Approval of FAT Plan for Operation Facility	21	14-Jun-24	09-Jul-24	02-Aug-24	26-Aug-24			DS4620: FS, SC2650: FF				
Speed Enforcement System													
FAT Plan Submission													
DS4670	Submission of SES Bench Test Plan	24					21-Feb-24	19-Mar-24	DS4650: FS				
DS4690	Comment of SES Bench Test Plan/ Workshops (System Briefing & Comment Discussion)	24	01-Apr-24	17-Apr-24	01-Sep-26	16-Sep-26	20-Mar-24		DS4670: FS				
DS4710	Resubmission of SES Bench Test Plan	12	18-Apr-24	02-May-24	17-Sep-26	02-Oct-26			DS4690: FS				
DS4720	Approval of SES Bench Test Plan	12	03-May-24	17-May-24	03-Oct-26	16-Oct-26			DS4710: FS				
Equipment FAT & Manufacturing													
EM1600	SEC System Bench Test	2	18-May-24	19-May-24	17-Oct-26	18-Oct-26			EM1570: FS 60, DS4720: FS				
DS4740	Submit SEC System Bech Test Report	1	01-Jun-24	01-Jun-24	31-Oct-26	31-Oct-26			EM1600: FS 12				
Manual Fallback Control System													
Equipment FAT & Manufacturing													
EM1540	FAT of Manual Fallback Control System	30	01-Apr-24	30-Apr-24	11-Aug-24	09-Sep-24			DS4780: FS, SC2220: FF, EM1640: FS, DS7690: FS				
EM1110	Post-FAT Configuration of Manual Fallback Control System	90	01-May-24	29-Jul-24	11-Oct-24	08-Jan-25			EM1540: FS, DS4790: FF, SC2200: FF				
DS4790	Submit Manual Fallback Control System FAT Test Report	1	07-May-24	07-May-24	16-Sep-24	16-Sep-24			EM1540: FS 6				
SCT Plan Submissions													
Central System													
DS2940	Submission of Central System SCT Plan	24	28-May-24	25-Jun-24	02-Dec-24	30-Dec-24			DS4340: FS				
DS2950	Comment on SCT Plan/ Workshops (System Briefing & Comment Discussion)	24	26-Jun-24	24-Jul-24	31-Dec-24	28-Jan-25			DS2940: FS				
Communication System													
DS3020	Submission of Communication System SCT Plan	24	01-Apr-24	29-Apr-24	24-Oct-24	20-Nov-24			EM1040: FS				
DS3030	Comment on SCT Plan/ Workshops (System Briefing & Comment Discussion)	24	30-Apr-24	29-May-24	31-Dec-24	28-Jan-25			DS3020: FS				
DS3040	Resubmission of SCT Plan for Communication System	12	30-May-24	13-Jun-24	01-Feb-25	14-Feb-25			DS3030: FS				
DS3050	Approval of SCT Plan for Communication System	24	14-Jun-24	12-Jul-24	15-Feb-25	14-Mar-25			DS3040: FS, SC1340: FF				
CCTV System													
DS3060	Submission of CCTV System SCT Plan	24	01-Apr-24	29-Apr-24	03-Sep-24	02-Oct-24			EM1050: FS				
DS3070	Comment on SCT Plan/ Workshops (System Briefing & Comment Discussion)	24	30-Apr-24	29-May-24	30-Oct-24	26-Nov-24			DS3060: FS				
DS3080	Resubmission of SCT Plan for CCTV System	12	30-May-24	13-Jun-24	27-Nov-24	10-Dec-24			DS3070: FS				
DS3090	Approval of SCT Plan for CCTV System	24	14-Jun-24	12-Jul-24	11-Dec-24	09-Jan-25			DS3080: FS, SC1460: FF				
PABX System													
DS3100	Submission of PABX System SCT Plan	24	01-Apr-24	29-Apr-24	18-Oct-24	14-Nov-24			EM1060: FS				
DS3110	Comment on SCT Plan/ Workshops (System Briefing & Comment Discussion)	24	30-Apr-24	29-May-24	28-Dec-24	25-Jan-25			DS3100: FS				
DS3120	Resubmission of SCT Plan for PABX System	12	30-May-24	13-Jun-24	27-Jan-25	12-Feb-25			DS3110: FS				
DS3130	Approval of SCT Plan for PABX System	24	14-Jun-24	12-Jul-24	13-Feb-25	12-Mar-25			DS3120: FS, SC1600: FF				
ET System													
DS3140	Submission of ET System SCT Plan	24	01-Apr-24	29-Apr-24	17-Sep-24	17-Oct-24			EM1070: FS				
DS3150	Comment on SCT Plan/ Workshops (System Briefing & Comment Discussion)	24	30-Apr-24	29-May-24	01-Nov-24	28-Nov-24			DS3140: FS				
DS3160	Resubmission of SCT Plan for ET System	12	30-May-24	13-Jun-24	29-Nov-24	12-Dec-24			DS3150: FS				

Activity ID	Activity Name	Original Duration	Early Start	Early Finish	Late Start	Late Finish	Actual Start	Actual Finish	Predecessor Details	2024			
										Mar 27	Apr 28	May 29	Jun 30
DS3170	Approval of SCT Plan for ET System	24	14-Jun-24	12-Jul-24	13-Dec-24	11-Jan-25			DS3160: FS, SC1730: FF				
PA System		84	01-Apr-24	12-Jul-24	03-Oct-24	12-Feb-25							
DS3180	Submission of PA System SCT Plan	24	01-Apr-24	29-Apr-24	03-Oct-24	31-Oct-24			EM1080: FS				
DS3190	Comment on SCT Plan/ Workshops (System Briefing & Comment Discussion)	24	30-Apr-24	29-May-24	29-Nov-24	27-Dec-24			DS3180: FS				
DS3200	Resubmission of SCT Plan for PA System	12	30-May-24	13-Jun-24	28-Dec-24	11-Jan-25			DS3190: FS				
DS3210	Approval of SCT Plan for PA System	24	14-Jun-24	12-Jul-24	13-Jan-25	12-Feb-25			DS3200: FS, SC1850: FF				
Radio System		84	01-Apr-24	12-Jul-24	27-Aug-24	08-Mar-25							
DS3220	Submission of Radio System SCT Plan	24	01-Apr-24	29-Apr-24	27-Aug-24	24-Sep-24			EM1090: SS 30				
DS3230	Comment on SCT Plan/ Workshops (System Briefing & Comment Discussion)	24	30-Apr-24	29-May-24	24-Dec-24	22-Jan-25			DS3220: FS				
DS3240	Resubmission of SCT Plan for Radio System	12	30-May-24	13-Jun-24	23-Jan-25	08-Feb-25			DS3230: FS				
DS3250	Approval of SCT Plan for Radio System	24	14-Jun-24	12-Jul-24	10-Feb-25	08-Mar-25			DS3240: FS, SC1980: FF				
Detection System		84	01-Apr-24	12-Jul-24	09-Sep-24	17-Jan-25							
DS3260	Submission of Detection System SCT Plan	24	01-Apr-24	29-Apr-24	09-Sep-24	08-Oct-24			EM1100: FS				
DS3270	Comment on SCT Plan/ Workshops (System Briefing & Comment Discussion)	24	30-Apr-24	29-May-24	07-Nov-24	04-Dec-24			DS3260: FS				
DS3280	Resubmission of SCT Plan for Detection System	12	30-May-24	13-Jun-24	05-Dec-24	18-Dec-24			DS3270: FS				
DS3290	Approval of SCT Plan for Detection System	24	14-Jun-24	12-Jul-24	19-Dec-24	17-Jan-25			DS3280: FS, SC2110: FF				
Manual Fallback Control System		48	08-May-24	05-Jul-24	17-Sep-24	28-Jan-25							
DS3300	Submission of Manual Fallback Control System SCT Plan	24	08-May-24	05-Jun-24	17-Sep-24	17-Oct-24			DS4790: FS				
DS3310	Comment on SCT Plan/ Workshops (System Briefing & Comment Discussion)	24	06-Jun-24	05-Jul-24	31-Dec-24	28-Jan-25			DS3300: FS				
Speed Enforcement System		84	01-Apr-24	12-Jul-24	30-Nov-24	22-Mar-25							
DS3380	Submission of Speed Enforcement System SCT Plan	24	01-Apr-24	29-Apr-24	30-Nov-24	28-Dec-24			EM1130: FS				
DS3390	Comment on SCT Plan/ Workshops (System Briefing & Comment Discussion)	24	30-Apr-24	29-May-24	09-Jan-25	08-Feb-25			DS3380: FS				
DS3400	Resubmission of SCT Plan for Speed Enforcement System	12	30-May-24	13-Jun-24	10-Feb-25	22-Feb-25			DS3390: FS				
DS3410	Approval of SCT Plan for Speed Enforcement System	24	14-Jun-24	12-Jul-24	24-Feb-25	22-Mar-25			DS3400: FS, SC2370: FF				
Power Distribution System		48	31-May-24	27-Jul-24	13-Aug-24	09-Oct-24							
DS3420	Submission of Power Distribution System SCT Plan	24	31-May-24	28-Jun-24	13-Aug-24	09-Sep-24			EM1620: FS, DS2592: FS				
DS3430	Comment on SCT Plan/ Workshops (System Briefing & Comment Discussion)	24	29-Jun-24	27-Jul-24	10-Sep-24	09-Oct-24			DS3420: FS				
Government Optical Fibre System		48	31-May-24	27-Jul-24	16-Jan-25	15-Mar-25							
DS3460	Submission of Government Optical Fibre System SCT Plan	24	31-May-24	28-Jun-24	16-Jan-25	15-Feb-25			EM1630: FS				
DS3470	Comment on SCT Plan/ Workshops (System Briefing & Comment Discussion)	24	29-Jun-24	27-Jul-24	17-Feb-25	15-Mar-25			DS3460: FS				
SAT Plan Submissions		84	16-Apr-24	26-Jul-24	18-Oct-24	13-Mar-25							
Central System		18	26-Jun-24	17-Jul-24	07-Jan-25	27-Jan-25							
DS3500	Submission of Central System SAT Plan	18	26-Jun-24	17-Jul-24	07-Jan-25	27-Jan-25			DS2940: FS				
Communication System		80	16-Apr-24	22-Jul-24	07-Nov-24	13-Feb-25							
DS3580	Submission of Communication System SAT Plan	20	16-Apr-24	09-May-24	07-Nov-24	29-Nov-24			DS3020: SS 12				
DS3590	Comment on SAT Plan/ Workshops (System Briefing & Comment Discussion)	24	10-May-24	07-Jun-24	30-Nov-24	28-Dec-24			DS3580: FS				
DS3600	Resubmission of SAT Plan for Communication System	12	08-Jun-24	22-Jun-24	30-Dec-24	13-Jan-25			DS3590: FS				
DS3610	Approval of SAT Plan for Communication System	24	24-Jun-24	22-Jul-24	14-Jan-25	13-Feb-25			DS3600: FS, SC1350: FF				
CCTV System		48	30-May-24	26-Jul-24	01-Nov-24	27-Dec-24							
DS3620	Submission of CCTV System SAT Plan	24	30-May-24	27-Jun-24	01-Nov-24	28-Nov-24			DS3060: FS 24				
DS3630	Comment on SAT Plan/ Workshops (System Briefing & Comment Discussion)	24	28-Jun-24	26-Jul-24	29-Nov-24	27-Dec-24			DS3620: FS				
PABX System		24	28-Jun-24	26-Jul-24	13-Jan-25	12-Feb-25							
DS3660	Submission of PABX System SAT Plan	24	28-Jun-24	26-Jul-24	13-Jan-25	12-Feb-25			DS3100: FS 48				
ET System		24	14-Jun-24	12-Jul-24	29-Nov-24	27-Dec-24							
DS3700	Submission of ET System SAT Plan	24	14-Jun-24	12-Jul-24	29-Nov-24	27-Dec-24			DS3140: FS 36				
PA System		24	28-Jun-24	26-Jul-24	28-Dec-24	25-Jan-25							
DS3740	Submission of PA System SAT Plan	24	28-Jun-24	26-Jul-24	28-Dec-24	25-Jan-25			DS3180: FS 48				



■ Remaining Work ◆ Milestone
■ Actual Work
■ Critical Activity

Date	Revision	Checked	Approved
31-Mar-24	Rev. 0	MY	

Activity ID	Activity Name	Original Duration	Early Start	Early Finish	Late Start	Late Finish	Actual Start	Actual Finish	Predecessor Details	2024				
										Mar 27	Apr 28	May 29	Jun 30	
Radio System		24	28-Jun-24	26-Jul-24	22-Nov-24	19-Dec-24								
DS3780	Submission of Radio System SAT Plan	24	28-Jun-24	26-Jul-24	22-Nov-24	19-Dec-24			DS3220: FS 48					
Manual Fallback Control System		24	06-Jun-24	05-Jul-24	18-Oct-24	14-Nov-24								
DS3860	Submission of Manual Fallback Control System SAT Plan	24	06-Jun-24	05-Jul-24	18-Oct-24	14-Nov-24			DS3300: FS					
Speed Enforcement System		60	30-Apr-24	12-Jul-24	30-Dec-24	13-Mar-25								
DS3940	Submission of Speed Enforcement System Reliability Test Plan	24	30-Apr-24	29-May-24	30-Dec-24	27-Jan-25			DS3380: FS					
DS3950	Comment on Reliability Test Plan/ Workshops (System Briefing & Comment Discussion)	24	30-May-24	27-Jun-24	28-Jan-25	27-Feb-25			DS3940: FS					
DS3960	Resubmission of Reliability Test Plan for Speed Enforcement System	12	28-Jun-24	12-Jul-24	28-Feb-25	13-Mar-25			DS3950: FS					
Training Document & O&M Manual Submission for T2/TKOLTT TCSS		65	23-May-24	08-Aug-24	06-May-25	22-Jul-25								
DS3980	Submit Document for System Description	6	23-May-24	29-May-24	06-May-25	12-May-25			DS3580: SS 30					
DS4010	Submit System Administration Manual	11	30-May-24	12-Jun-24	13-May-25	24-May-25			DS3980: FS					
DS4020	Submit Training Manual	48	13-Jun-24	08-Aug-24	26-May-25	22-Jul-25			DS4010: FS					
Site Installation and Testing & Commissioning		209	01-Apr-24	09-Dec-24	23-May-24	31-Oct-26								
Installation & Testing Related to Stage 2 of Works		187	27-Apr-24	09-Dec-24	28-Jun-24	31-Oct-26								
Installation		187	27-Apr-24	09-Dec-24	28-Jun-24	31-Oct-26								
Portion 4 - TKO-LTT (LT Interchange)		78	08-May-24	09-Aug-24	28-Jun-24	16-Jan-25								
SW1930	Install Cable Containments	48	08-May-24	05-Jul-24	28-Jun-24	23-Aug-24			SW1030: FS, DS6560: FS, DS6402: FS					
SW1960	Install Equipment in Kiosk C	12	06-Jun-24	20-Jun-24	06-Nov-24	19-Nov-24			SW1050: FS, DS4340: FS, DS4440: FS					
SW1940	Install CCTV Camera	36	28-Jun-24	09-Aug-24	04-Dec-24	16-Jan-25			SW1040: SS 12, SW1930: SS 12, DS4090: FS, DS6440: FS					
Portion 1 - South Apron Up to SUS		66	08-May-24	26-Jul-24	03-Jul-24	17-Sep-24								
SW2000	Install Cable Containments - the 1st Section	48	08-May-24	05-Jul-24	03-Jul-24	27-Aug-24			SW1220: FS, SC2480: FF, DS6560: FS, DS6402: FS					
SW2010	Install CCTV Camera	24	28-Jun-24	26-Jul-24	21-Aug-24	17-Sep-24			SW2000: SS 42, SC1470: FF, DS4090: FS, DS6440: FS					
Portion 2 - Tunnel Section, Service Gallery, WVB & EVB		187	27-Apr-24	09-Dec-24	09-Sep-24	31-Oct-26								
SW2080	Install Cable Containments	187	27-Apr-24	09-Dec-24	09-Sep-24	31-Oct-26			SW2300: SS, SW2400: SS, SW2510: SS, SW2600: SS, SW2720: SS					
Portion 3 - CKL Branch Tunnel in TKO-LTT Site		79	27-Apr-24	01-Aug-24	28-Jan-25	20-Mar-25								
SW2230	Install Cable Containments	36	27-Apr-24	11-Jun-24	07-Feb-25	20-Mar-25			SW1860: FS, SC2480: FF, DS6560: FS, DS6402: FS					
SW2220	Install CCTV Camera	29	28-Jun-24	01-Aug-24	28-Jan-25	05-Mar-25			SW1860: SS 12, SC1470: FF, DS4090: FS, DS6440: FS					
Underpass S21		30	27-Apr-24	03-Jun-24	26-Apr-25	03-Jun-25								
SW2260	Install Cable Containment	14	27-Apr-24	14-May-24	26-Apr-25	14-May-25			AC1040: SS, SC2480: FF, DS6560: FS, DS6402: FS					
SW2280	Laying of Leaky Cable	30	27-Apr-24	03-Jun-24	26-Apr-25	03-Jun-25			SW2260: SS					
SW2290	Laying of Power Cable From TCSS Cabinet in T2 Area	14	07-May-24	23-May-24	17-May-25	03-Jun-25			SW2260: SS 7					
SW2270	Install YAGI Antenna	7	16-May-24	23-May-24	26-May-25	03-Jun-25			SW2260: FS					
Portion 4 - TKO-LTT (LT Interchange)		108	01-Apr-24	09-Aug-24	23-May-24	19-Nov-24								
SW1020	Inspect Civil Provisions & Submit Inspection Report	12	01-Apr-24	15-Apr-24	23-May-24	05-Jun-24			AC1030: SS, DS6600: FS, DS6680: FS, DS6760: FS, DS6840: FS					
SW1030	Rectify Civil Provision Defects by Others	18	16-Apr-24	07-May-24	06-Jun-24	27-Jun-24			SW1020: FS					
Installation Works		108	01-Apr-24	09-Aug-24	28-Jun-24	19-Nov-24								
SW1040	Install Cable Containments	48	01-Apr-24	29-May-24	28-Jun-24	23-Aug-24			DS6400: FS, DS6540: FS					
SW1050	Install Equipment Racks	24	08-May-24	05-Jun-24	07-Sep-24	07-Oct-24			SW1030: FS					
SW1100	Install Server Equipment	36	06-Jun-24	19-Jul-24	08-Oct-24	19-Nov-24			SW1050: FS, DS4440: FS, DS4340: FS					
SW1120	Install Equipment in Kiosk C	12	06-Jun-24	20-Jun-24	06-Nov-24	19-Nov-24			SW1050: FS, DS4340: FS, DS4440: FS					



■ Remaining Work ◆ ◆ Milestone
■ Actual Work
■ Critical Activity

Date	Revision	Checked	Approved
31-Mar-24	Rev. 0	MY	

Activity ID	Activity Name	Original Duration	Early Start	Early Finish	Late Start	Late Finish	Actual Start	Actual Finish	Predecessor Details	2024			
										Mar 27	Apr 28	May 29	Jun 30
SW1060	Install CCTV Camera	36	28-Jun-24	09-Aug-24	10-Sep-24	24-Oct-24			SW1040: SS 12, SW1930: SS 12, DS4090: FS, DS6440: FS				
SW1090	Install Video Wall Equipment (Administration Building)	21	28-Jun-24	23-Jul-24	26-Oct-24	19-Nov-24			SW1040: FS 24, SW1930: SS 24, SC1330: FF, DS4440: FS, DS4340: FS, DS4440: FF				
Portion 1 - South Apron Up to SUS		96	01-Apr-24	26-Jul-24	27-May-24	17-Sep-24							
SW1210	Inspect Civil Provisions & Submit Inspection Report	12	01-Apr-24	15-Apr-24	27-May-24	08-Jun-24			AC1000: SS				
SW1220	Rectify Civil Provision Defects by Others	18	16-Apr-24	07-May-24	11-Jun-24	02-Jul-24			SW1210: FS				
Installation Works		66	08-May-24	26-Jul-24	03-Jul-24	17-Sep-24							
SW1230	Install Cable Containments - the 1st Section	48	08-May-24	05-Jul-24	03-Jul-24	27-Aug-24			SW1220: FS, SC2480: FF, DS6560: FS, DS6402: FS				
SW1240	Install CCTV Camera	24	28-Jun-24	26-Jul-24	21-Aug-24	17-Sep-24			SW1230: SS 42, SC1470: FF, DS4090: FS, DS6440: FS				
Portion 2 - Tunnel Section, Service Gallery, WVB & EVB		82	01-Apr-24	10-Jul-24	29-Aug-24	31-Oct-26							
Tunnel Section		79	01-Apr-24	06-Jul-24	29-Aug-24	21-Nov-24							
Tunnel Section - CH 6+568 to CH 7+100		46	01-Apr-24	27-May-24	28-Sep-24	07-Nov-24							
SW2860	Inspect Civil Provisions & Submit Inspection Report	3	01-Apr-24	03-Apr-24	28-Sep-24	02-Oct-24			AC1050: SS				
SW2870	Rectify Civil Provision Defects by Others	6	05-Apr-24	11-Apr-24	03-Oct-24	09-Oct-24			SW2860: FS				
Installation Works		24	27-Apr-24	27-May-24	10-Oct-24	07-Nov-24							
SW2300	Install Cable Containment	24	27-Apr-24	27-May-24	10-Oct-24	07-Nov-24			SC2480: FF, SW2870: FS, DS6560: FS, DS6402: FS				
Tunnel Section - CH 7+100 to CH 7+600		36	13-Apr-24	27-May-24	29-Aug-24	08-Oct-24							
SW2880	Inspect Civil Provisions & Submit Inspection Report	3	13-Apr-24	16-Apr-24	29-Aug-24	31-Aug-24			AC1060: SS				
SW2890	Rectify Civil Provision Defects by Others	6	17-Apr-24	23-Apr-24	02-Sep-24	07-Sep-24			SW2880: FS				
Installation Works		24	27-Apr-24	27-May-24	09-Sep-24	08-Oct-24							
SW2400	Install Cable Containment	24	27-Apr-24	27-May-24	09-Sep-24	08-Oct-24			SC2480: FF, SW2890: FS, DS6560: FS, DS6402: FS				
Tunnel Section - CH 7+600 to CH 8+100		33	28-May-24	06-Jul-24	15-Oct-24	21-Nov-24							
SW2900	Inspect Civil Provisions & Submit Inspection Report	3	28-May-24	30-May-24	15-Oct-24	17-Oct-24			AC1070: SS				
SW2910	Rectify Civil Provision Defects by Others	6	31-May-24	06-Jun-24	18-Oct-24	24-Oct-24			SW2900: FS				
Installation Works		24	07-Jun-24	06-Jul-24	25-Oct-24	21-Nov-24							
SW2510	Install Cable Containment	24	07-Jun-24	06-Jul-24	25-Oct-24	21-Nov-24			SC2480: FF, EM1620: FS, SW2910: FS, DS6560: FS, DS6402: FS				
West Ventilation Building		82	01-Apr-24	10-Jul-24	16-Oct-24	31-Oct-26							
SW1360	Inspect Civil Provisions & Submit Inspection Report	12	01-Apr-24	15-Apr-24	24-Sep-26	09-Oct-26			AC1010: SS, KD1010: FS 359				
SW1370	Rectify Civil Provision Defects by Others	18	16-Apr-24	07-May-24	10-Oct-26	31-Oct-26			SW1360: FS				
Installation Works		82	01-Apr-24	10-Jul-24	16-Oct-24	20-Jan-25							
SW1650	Install Cable Containments	24	01-Apr-24	29-Apr-24	16-Oct-24	12-Nov-24			SC2480: FF, DS6400: FS, DS6540: FS				
SW1660	Position Equipment Rack	12	30-Apr-24	14-May-24	23-Nov-24	06-Dec-24			SW1650: FS				
SW1670	Install Network Equipment	36	28-May-24	10-Jul-24	07-Dec-24	20-Jan-25			SW1660: FS, SC1330: FF, DS4340: FS, DS4440: FS				
East Ventilation Building		82	01-Apr-24	10-Jul-24	16-Oct-24	31-Oct-26							
SW2960	Inspect Civil Provisions & Submit Inspection Report	12	01-Apr-24	15-Apr-24	24-Sep-26	09-Oct-26			AC1010: SS, KD1010: FS				
SW2970	Rectify Civil Provision Defects by Others	18	16-Apr-24	07-May-24	10-Oct-26	31-Oct-26			SW2960: FS				
Installation Works		82	01-Apr-24	10-Jul-24	16-Oct-24	20-Jan-25							
SW1750	Install Cable Containments	24	01-Apr-24	29-Apr-24	16-Oct-24	12-Nov-24			SC2480: FF, DS6400: FS, DS6540: FS				
SW1760	Position Equipment Rack	12	30-Apr-24	14-May-24	23-Nov-24	06-Dec-24			SW1750: FS				
SW1770	Install Network Equipment	36	28-May-24	10-Jul-24	07-Dec-24	20-Jan-25			SW1760: FS, SC1330: FF, DS4340: FS, DS4440: FS				
Portion 3 - CKL Branch Tunnel in TKO-LTT Site		101	01-Apr-24	01-Aug-24	04-Jan-25	14-Mar-25							
SW1850	Inspect Civil Provisions & Submit Inspection Report	3	01-Apr-24	03-Apr-24	04-Jan-25	07-Jan-25			AC1020: SS				
SW1860	Rectify Civil Provision Defects by Others	7	05-Apr-24	12-Apr-24	08-Jan-25	15-Jan-25			SW1850: FS				
Installation Works		79	27-Apr-24	01-Aug-24	16-Jan-25	14-Mar-25							



■ Remaining Work ◆ Milestone
■ Actual Work
■ Critical Activity

Date	Revision	Checked	Approved
31-Mar-24	Rev. 0	MY	

Activity ID	Activity Name	Original Duration	Early Start	Early Finish	Late Start	Late Finish	Actual Start	Actual Finish	Predecessor Details	2024			
										Mar 27	Apr 28	May 29	Jun 30
SW1890	Install Cable Containments	36	27-Apr-24	11-Jun-24	01-Feb-25	14-Mar-25			SW1860: FS, SC2480: FF, DS6560: FS, DS6402: FS				
SW1870	Install CCTV Camera	29	28-Jun-24	01-Aug-24	16-Jan-25	21-Feb-25			SW1860: FS, SC1470: FF, DS4090: FS, DS6440: FS				

