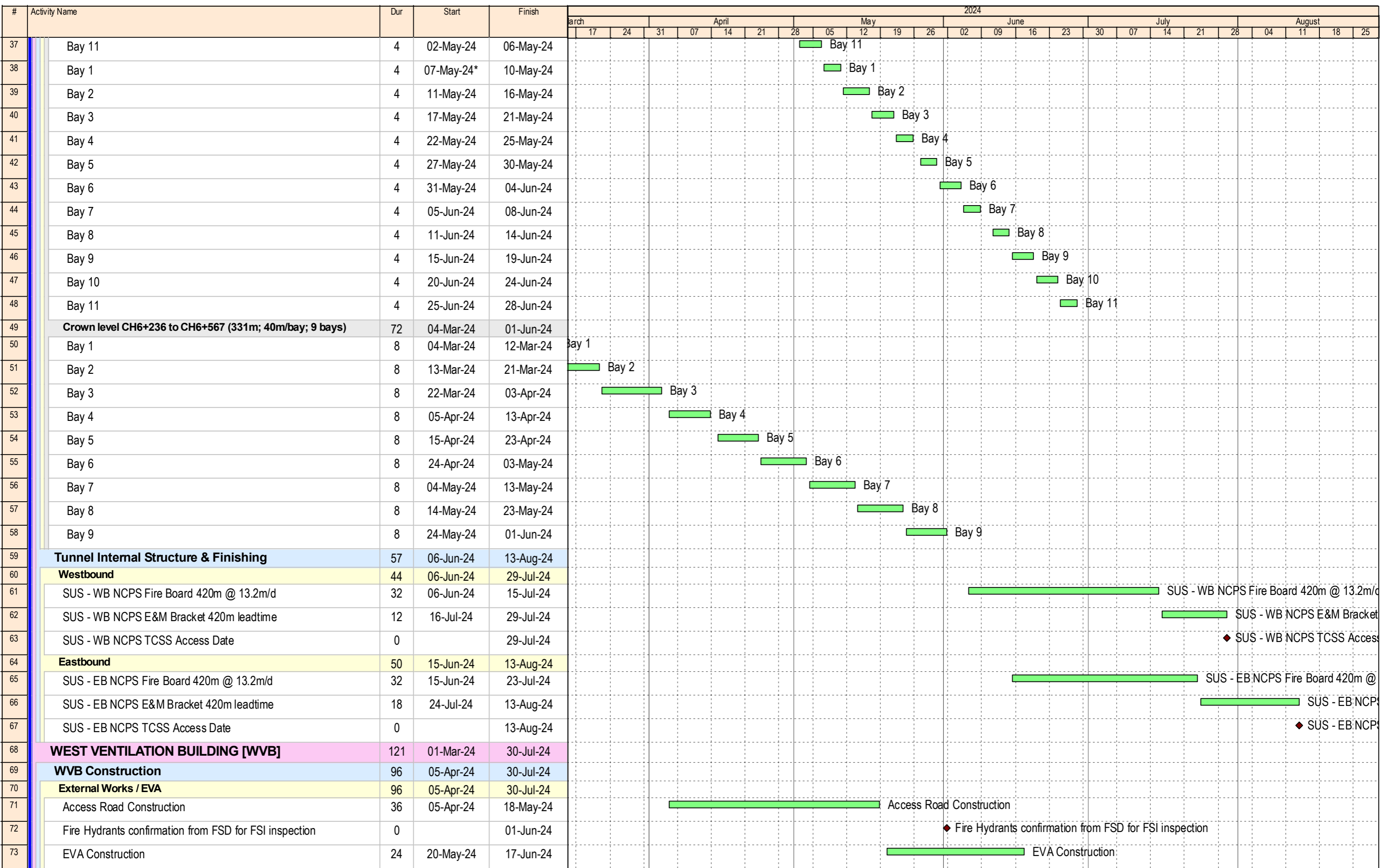


#	Activity Name	Dur	Start	Finish	2024																											
					March			April				May					June				July				August							
					17	24	31	07	14	21	28	05	12	19	26	02	09	16	23	30	07	14	21	28	04	11	18	25				
1	<b>ED/2018/04 TRUNK ROAD T2</b>	172	31-Jan-24	30-Aug-24																												
2	<b>SUPPORTING UNDERGROUND STRUCTURE [SUS]</b>	133	02-Mar-24	13-Aug-24																												
3	<b>Skin Wall Construction</b>	95	02-Mar-24	28-Jun-24																												
4	<b>Westbound</b>	76	02-Mar-24	05-Jun-24																												
5	<b>Road level CH6+259 to CH6+567 (308m; 15m/bay; 21 bays)</b>	76	02-Mar-24	05-Jun-24																												
6	Bay 3	4	02-Mar-24	06-Mar-24																												
7	Bay 4	4	07-Mar-24	11-Mar-24																												
8	Bay 5	4	12-Mar-24	15-Mar-24																												
9	Bay 6	4	16-Mar-24	20-Mar-24																												
10	Bay 7	4	21-Mar-24	25-Mar-24																												
11	Bay 8	4	26-Mar-24	02-Apr-24																												
12	Bay 9	4	03-Apr-24	08-Apr-24																												
13	Bay 10	4	09-Apr-24	12-Apr-24																												
14	Bay 11	4	13-Apr-24	17-Apr-24																												
15	Bay 12	4	18-Apr-24	22-Apr-24																												
16	Bay 13	4	23-Apr-24	26-Apr-24																												
17	Bay 14	4	27-Apr-24	02-May-24																												
18	Bay 15	4	03-May-24	07-May-24																												
19	Bay 16	4	08-May-24	11-May-24																												
20	Bay 17	4	13-May-24	17-May-24																												
21	Bay 18	4	18-May-24	22-May-24																												
22	Bay 19	4	23-May-24	27-May-24																												
23	Bay 20	4	28-May-24	31-May-24																												
24	Bay 21	4	01-Jun-24	05-Jun-24																												
25	<b>Eastbound</b>	94	04-Mar-24	28-Jun-24																												
26	<b>Road level CH6+236 to CH6+567 (331m; 15m/bay; 22 bays)</b>	88	11-Mar-24	28-Jun-24																												
27	Bay 1	4	11-Mar-24*	14-Mar-24																												
28	Bay 2	4	15-Mar-24	19-Mar-24																												
29	Bay 3	4	20-Mar-24	23-Mar-24																												
30	Bay 4	4	25-Mar-24	28-Mar-24																												
31	Bay 5	4	02-Apr-24	06-Apr-24																												
32	Bay 6	4	08-Apr-24	11-Apr-24																												
33	Bay 7	4	12-Apr-24	16-Apr-24																												
34	Bay 8	4	17-Apr-24	20-Apr-24																												
35	Bay 9	4	22-Apr-24	25-Apr-24																												
36	Bay 10	4	26-Apr-24	30-Apr-24																												



- Milestone
- Planned Bar
- Critical Bar

**ED/2018/04 Trunk Road T2 and Infrastructure Works**  
for Developments at South Apron

**Three Months Rolling Programme (Apr-24)**



Date	Revision	Checked	Approved
31-Jan-24	Rev. A	SPa	


#	Activity Name	Dur	Start	Finish	2024																							
					March	17	24	31	07	14	21	28	05	12	19	26	02	09	16	23	30	07	14	21	28	04	11	18
74	Available CKR access for FSD inspection	36	18-Jun-24	30-Jul-24																	Available CKR access for FSD							
75	<b>Essential Criteria for FSI</b>	84	01-Mar-24	15-Jun-24																								
76	<b>Power Engerization</b>	45	06-Apr-24	30-May-24																								
77	CLP Installation	45	06-Apr-24	30-May-24	CLP Installation														CLP Installation									
78	CLP Tx Rm - Power On	0		30-May-24																	◆ CLP Tx Rm - Power On							
79	<b>Dangerous Goods Licenses</b>	84	01-Mar-24	15-Jun-24																								
80	WVB - Genset & Oil Tank delivery on site	0		01-Mar-24	WVB - Genset & Oil Tank delivery on site																							
81	WVB - Genset & Oil Tank Installation and T&C	48	02-Mar-24	02-May-24	WVB - Genset & Oil Tank Installation and T&C												WVB - Genset & Oil Tank Installation and T&C											
82	Receipt of report of compliance	0		10-May-24																	◆ Receipt of report of compliance							
83	Submission of Application	7	03-May-24	10-May-24	Submission of Application												Submission of Application											
84	DG Licenses Inspection (Vent) by FSD	0		20-May-24																	◆ DG Licenses Inspection (Vent) by FSD							
85	DG Licenses Inspection (Layout) by FSD	0		07-Jun-24																	◆ DG Licenses Inspection (Layout) by FSD							
86	Issuance of Certificate from FSD	0		15-Jun-24																	◆ Issuance of Certificate from FSD							
87	<b>Fireman Lift</b>	36	13-Apr-24	27-May-24																								
88	T&C (by OTIS) & Issue WR1 / Submisison of LE5	24	13-Apr-24	11-May-24	T&C (by OTIS) & Issue WR1 / Submisison of LE5												T&C (by OTIS) & Issue WR1 / Submisison of LE5											
89	EMSD Inspection	12	13-May-24	27-May-24	EMSD Inspection												EMSD Inspection											
90	Issuance of Permit by EMSD	0		27-May-24																	◆ Issuance of Permit by EMSD							
91	<b>Water Supply</b>	50	15-Apr-24	15-Jun-24																								
92	<b>FS Water (Inside WVB)</b>	37	30-Apr-24	15-Jun-24																								
93	Submission of WW046 Part IV for FS Water	0		30-Apr-24																	◆ Submission of WW046 Part IV for FS Water							
94	Inspection for FS Water & Issuance of WW046 part V (a) by WSD	12	17-May-24	30-May-24	Inspection for FS Water & Issuance of WW046 part V (a) by WSD												Inspection for FS Water & Issuance of WW046 part V (a) by WSD											
95	Pipe Sterilization & Water Sampling	6	31-May-24	06-Jun-24	Pipe Sterilization & Water Sampling												Pipe Sterilization & Water Sampling											
96	Water Sample Testing	3	07-Jun-24	11-Jun-24	Water Sample Testing												Water Sample Testing											
97	Issuance of WW046 Part V(b) from WSD	0		11-Jun-24																	◆ Issuance of WW046 Part V(b) from WSD							
98	Issuance of WWO1005 Certificate for FS Water from WSD	0		15-Jun-24																	◆ Issuance of WWO1005 Certificate for FS Water from WSD							
99	Connect pipe insde WVB to Master Meter Cabinet	4	12-Jun-24	15-Jun-24	Connect pipe insde WVB to Master Meter Cabinet												Connect pipe insde WVB to Master Meter Cabinet											
100	<b>FS Lead-in Watermain</b>	31	15-Apr-24	23-May-24																								
101	Submission WW046 Part IV for water connection	0		15-Apr-24																	◆ Submission WW046 Part IV for water connection							
102	Inspection for FS Lead-in watermain & issuance of WW046 part V	12	27-Apr-24	11-May-24	Inspection for FS Lead-in watermain & issuance of WW046 part V (a) by WSD												Inspection for FS Lead-in watermain & issuance of WW046 part V (a) by WSD											
103	Pipe Sterilization & Water Sampling	6	13-May-24	20-May-24	Pipe Sterilization & Water Sampling												Pipe Sterilization & Water Sampling											
104	Issuance of WW046 Part V(b) from WSD	0		23-May-24																	◆ Issuance of WW046 Part V(b) from WSD							
105	Water Sample Testing	3	21-May-24	23-May-24	Water Sample Testing												Water Sample Testing											
106	<b>Final T&amp;C and FSI Inspection</b>	50	31-May-24	30-Jul-24																								
107	Submit Application Form (FS501)	0		17-Jun-24																	◆ Submit Application Form (FS501)							
108	WVB - Overall T&C	26	31-May-24	02-Jul-24	WVB - Overall T&C												WVB - Overall T&C											
109	FSI Acceptance Inspection	24	03-Jul-24	30-Jul-24	FSI Acceptance Inspection												FSI Acceptance Inspection											
110	Issuance of FS Certificate	0		30-Jul-24																	◆ Issuance of FS Certificate							

Page 3 of 10

- ◆ Milestone
- Planned Bar
- Critical Bar

**ED/2018/04 Trunk Road T2 and Infrastructure Works  
for Developments at South Apron**

**Three Months Rolling Programme (Apr-24)**



Date	Revision	Checked	Approved
31-Jan-24	Rev. A	SPa	



#	Activity Name	Dur	Start	Finish	2024																											
					March				April				May				June				July				August							
					17	24	31	07	14	21	28	05	12	19	26	02	09	16	23	30	07	14	21	28	04	11	18	25				
111	<b>LAUNCHING SHAFT</b>	86	01-Mar-24	17-Jun-24																												
112	Cell 1 & 2	32	09-May-24	17-Jun-24																												
113	<b>OHVD &amp; Top Slab</b>	32	09-May-24	17-Jun-24																												
114	Waterproofing + Backfilling stage 1 (-10.5 mPD)	32	09-May-24	17-Jun-24																												
115	<b>Cut &amp; Cover</b>	84	01-Mar-24	14-Jun-24																												
116	Trimming Roof Slab	24	01-Mar-24	28-Mar-24																												
117	Roof Slab RC	30	02-Apr-24	08-May-24																												
118	Roof Slab formworks dismantling + waterproofing	18	09-May-24	30-May-24																												
119	LSCC Manhole and Gully construction	12	31-May-24	14-Jun-24																												
120	<b>TBM TUNNELLING</b>	172	31-Jan-24	30-Aug-24																												
121	<b>S1282 Eastbound</b>	163	12-Feb-24	30-Aug-24																												
122	<b>CKL Seawall removal</b>	151	12-Feb-24	11-Jul-24																												
123	Bay 1-3a seawall and spoil removal	108	12-Feb-24	29-May-24																												
124	Bay 3b-4 seawall and spoil removal	43	30-May-24	11-Jul-24																												
125	<b>Utilities Relocation</b>	102	06-Mar-24	11-Jul-24																												
126	EB Tunnel Slurry pipe relocation up to CP11 @ 1CP / week	30	06-Mar-24*	13-Apr-24																												
127	EB Tunnel Slurry pipe relocation up to CP16 @ 1CP / week	30	15-Apr-24	21-May-24																												
128	EB Tunnel Slurry pipe relocation up to CP21 @ 1CP / week	42	22-May-24	11-Jul-24																												
129	<b>TBM Excavation</b>	108	15-May-24	30-Aug-24																												
130	15 May 24 EB TBM re-start CH8632 R0900	0	15-May-24*																													
131	CH 8632-8661 R0913 - Rock excavation 28.6m @ 1.4m/d	20	15-May-24	03-Jun-24																												
132	CH 8661-8687 R0925 - Rock excavation 26.4m @ 1.4m/d	19	30-Jun-24	18-Jul-24																												
133	CH 8687-8709 R0935 - Rock excavation 22m @ 1.4m/d	15	19-Jul-24	02-Aug-24																												
134	CH 8709-8748 R0953 - Rock excavation 39m @ 1.4m/d	28	03-Aug-24	30-Aug-24																												
135	<b>S1281 Westbound</b>	210	31-Jan-24	27-Aug-24																												
136	WB TBM Main Drive repair	91	31-Jan-24	30-Apr-24																												
137	01 May 24 WB TBM re-start CH8612 R0891	0	01-May-24																													
138	CH 8612-8778 R0966 - Rock excavation 166m @ 1.4m/d	119	01-May-24	27-Aug-24																												
139	<b>SUB-SEA TUNNEL CROSS PASSAGE [CP]</b>	38	19-Jun-24	02-Aug-24																												
140	<b>Tympanum Civil Works</b>	38	19-Jun-24	02-Aug-24																												
141	<b>Eastbound</b>	24	06-Jul-24	02-Aug-24																												
142	CP25 - EB - Tympanum Civil works CH8489	24	06-Jul-24	02-Aug-24																												
143	<b>Westbound</b>	28	19-Jun-24	22-Jul-24																												
144	CP25 - WB - Tympanum Civil works CH8499	28	19-Jun-24	22-Jul-24																												
145	<b>INTERNAL STRUCTURES</b>	115	15-Apr-24	30-Aug-24																												
146	<b>Service Gallery B</b>	93	08-May-24	27-Aug-24																												
147	<b>Eastbound</b>	60	22-May-24	01-Aug-24																												
148	EB SG0820 - SG0833 13 nos installation 28.6m	20	22-May-24	14-Jun-24																												
149	EB ISIG re-start at SG0820E	0	02-Jul-24																													

- ◆ Milestone
- Planned Bar
- Critical Bar



Date	Revision	Checked	Approved
31-Jan-24	Rev. A	SPa	

#	Activity Name	Dur	Start	Finish	2024																											
					March				April				May				June				July				August							
					17	24	31	07	14	21	28	05	12	19	26	02	09	16	23	30	07	14	21	28	04	11	18	25				
150	EB SG850 completion for CP2.2 installation	0	08-Jul-24																										◆ EB SG850 completion for CP2.2 installation			
151	EB SG0833E - SG0845E 12 nos installation 26.4m	11	08-Jul-24	19-Jul-24																									EB SG0833E - SG0845E 12 nos installation			
152	EB SG0845E - SG0855E 10 nos installation 22.0m	11	20-Jul-24	01-Aug-24																									EB SG0845E - SG0855E 10 nos installation			
153	<b>Westbound</b>	93	08-May-24	27-Aug-24																												
154	WB ISIG re-start at SG0814W	0	08-May-24																										◆ WB ISIG re-start at SG0814W			
155	WB SG0814W - SG0889W 75 nos installation 165m	93	08-May-24	27-Aug-24																												
156	<b>Corbel</b>	89	17-May-24	30-Aug-24																												
157	<b>Eastbound</b>	56	30-May-24	05-Aug-24																												
158	EB Corbel re-start	0	30-May-24																										◆ EB Corbel re-start			
159	EB Corbel construction CH 8290-8319 28.6m	19	30-May-24	21-Jun-24																									EB Corbel construction CH 8290-8319 28.6m			
160	EB Corbel construction CH 8319-8345 26.4m	6	16-Jul-24	22-Jul-24																									EB Corbel construction CH 8319-8345 26.4m			
161	EB Corbel construction CH 8345-8367 22m	12	23-Jul-24	05-Aug-24																									EB Corbel construction CH 8345-8367 22m			
162	<b>Westbound</b>	89	17-May-24	30-Aug-24																												
163	WB Corbel re-start	0	17-May-24																										◆ WB Corbel re-start			
164	WB Corbel construction CH 8420-8585 165m	89	17-May-24	30-Aug-24																												
165	<b>Thermal Barrier</b>	114	15-Apr-24	29-Aug-24																												
166	<b>Road Level</b>	114	15-Apr-24	29-Aug-24																												
167	<b>Eastbound</b>	114	15-Apr-24	29-Aug-24																												
168	<b>NCPS</b>	114	15-Apr-24	29-Aug-24																												
169	EB NCP Fire Board up to CP11 @ 13.2m/d	38	15-Apr-24	30-May-24																									EB NCP Fire Board up to CP11 @ 13.2m/d			
170	EB NCP Fire Board up to CP16 @ 13.2m/d	38	31-May-24	16-Jul-24																									EB NCP Fire Board up to CP16 @ 13.2m/d			
171	EB NCP Fire Board up to CP21 @ 13.2m/d	38	17-Jul-24	29-Aug-24																									EB NCP Fire Board up to CP21 @ 13.2m/d			
172	<b>Parapet Installation</b>	66	22-May-24	08-Aug-24																												
173	<b>Eastbound</b>	66	22-May-24	08-Aug-24																												
174	EB NCPS CH6640-8100 Parapet installation up to CP21 @ 10 Ring	66	22-May-24	08-Aug-24																									EB NCPS CH6640-8100 Parapet installation up to CP21 @ 10 Ring			
175	<b>CKL Pilot Tunnel</b>	48	16-Apr-24	13-Jun-24																												
176	<b>Westbound</b>	48	16-Apr-24	13-Jun-24																												
177	WB Pilot TBM bulkhead construction 2nd bulkhead (alap)	48	16-Apr-24	13-Jun-24																									WB Pilot TBM bulkhead construction 2nd bulkhead (alap)			
178	<b>CHA KWO LING TUNNEL</b>	121	09-Mar-24	06-Aug-24																												
179	<b>Eastbound</b>	101	25-Mar-24	29-Jul-24																												
180	<b>Type A1/A2 Lining</b>	32	25-Mar-24	06-May-24																												
181	EB Type A1 to C1-C2 fwks adjustment 1st stage	16	25-Mar-24	16-Apr-24																									EB Type A1 to C1-C2 fwks adjustment 1st stage			
182	EB Type A1 to C1-C2 fwks adjustment 2nd stage	8	26-Apr-24	06-May-24																									EB Type A1 to C1-C2 fwks adjustment 2nd stage			
183	<b>Type C Wall &amp; Crown</b>	8	17-Apr-24	25-Apr-24																												
184	EB Type C1 Crown (1 bay 8d/bay)	8	17-Apr-24	25-Apr-24																									EB Type C1 Crown (1 bay 8d/bay)			
185	<b>Type C OHVD</b>	18	09-Jul-24	29-Jul-24																												
186	EB Type C1 & 2 OHVD slab fwks assembly	18	09-Jul-24	29-Jul-24																									EB Type C1 & 2 OHVD slab fwks assembly			
187	<b>Westbound</b>	93	09-Mar-24	04-Jul-24																												
188	<b>Type A</b>	93	09-Mar-24	04-Jul-24																												
189	WB Type A1 OHVD Fwk assembly	24	09-Mar-24	10-Apr-24																									WB Type A1 OHVD Fwk assembly			

- ◆ Milestone
- █ Planned Bar
- █ Critical Bar

ED/2018/04 Trunk Road T2 and Infrastructure Works  
for Developments at South Apron  
Three Months Rolling Programme (Apr-24)



Date	Revision	Checked	Approved
31-Jan-24	Rev. A	SPa	





#	Activity Name	Dur	Start	Finish	2024																											
					March				April				May				June				July				August							
					17	24	31	07	14	21	28	05	12	19	26	02	09	16	23	30	07	14	21	28	04	11	18	25				
228	CLP Final Inspection / CLP Tx Rm - Handover to CLP	0		16-Aug-24																								◆ CLP Final In				
229	Dangerous Goods Licenses	18	29-Jun-24	20-Jul-24																												
230	Fuel Tank Room - ABWF works	18	29-Jun-24	20-Jul-24																								◆ Fuel Tank Room - ABWF works				
231	Water Supply	48	02-Jul-24	27-Aug-24																												
232	FS Lead-in Watermain	48	02-Jul-24	27-Aug-24																												
233	External Watermain (TBC)	48	02-Jul-24*	27-Aug-24																												
234	Submission WW046 Part IV for water connection	0		27-Aug-24																								◆ S				
235	<b>E&amp;M INSTALLATION</b>	137	14-Mar-24	29-Aug-24																												
236	<b>E&amp;M</b>	133	14-Mar-24	24-Aug-24																												
237	<b>DPR + SUS (Westbound + Eastbound)</b>	72	30-Apr-24	26-Jul-24																												
238	<b>Westbound</b>	48	30-Apr-24	27-Jun-24																												
239	WB CPS E&M Bracket	24	30-Apr-24*	29-May-24																												
240	WB NCPS E&M Bracket	24	30-May-24	27-Jun-24																												
241	<b>Eastbound</b>	48	30-May-24	26-Jul-24																												
242	EB CPS E&M Bracket	24	30-May-24	27-Jun-24																												
243	EB NCPS E&M Bracket	24	28-Jun-24	26-Jul-24																												
244	<b>1st section CH6703-7109 - (406m) WB CPS &amp; NCPS + EB CPS</b>	101	20-Mar-24	24-Jul-24																												
245	<b>E&amp;M Installation (BYME)</b>	101	20-Mar-24	24-Jul-24																												
246	<b>CP side</b>	64	20-Mar-24	08-Jun-24																												
247	<b>2nd Fixing</b>	64	20-Mar-24	08-Jun-24																												
248	Cable delivery arrival site	0		20-Mar-24*																								◆ Cable delivery arrival site				
249	Cable Laying - CPS	10	20-Mar-24	03-Apr-24																												
250	Cable Fixing - CPS	24	05-Apr-24	03-May-24																												
251	Cable Joint works - CPS	20	17-May-24	08-Jun-24																												
252	<b>OHVD Soffit</b>	96	20-Mar-24	18-Jul-24																												
253	<b>1st Fixing</b>	34	20-Mar-24	03-May-24																												
254	OHVD Soffit Fire Board completion (BTP)	0		20-Mar-24*																								◆ OHVD Soffit Fire Board completion (BTP)				
255	Black paint painting	6	20-Mar-24	26-Mar-24																												
256	Linear Heat Detection Cable bracket, Containment Installation - (	28	27-Mar-24	03-May-24																												
257	<b>2nd Fixing</b>	38	04-May-24	19-Jun-24																												
258	Tunnel Damper Wiring Works - OHVD	30	04-May-24	08-Jun-24																												
259	Final Circuit Installation - OHVD	24	22-May-24	19-Jun-24																												
260	<b>Final Fixing</b>	24	20-Jun-24	18-Jul-24																												
261	Tunnel Lighting Installation - OHVD	24	20-Jun-24	18-Jul-24																												
262	<b>Non CP side</b>	70	30-Apr-24	24-Jul-24																												
263	<b>1st Fixing</b>	12	30-Apr-24	14-May-24																												
264	NCPS Bracket completion	0		14-May-24																								◆ NCPS Bracket completion				
265	E&M Bracket	12	30-Apr-24*	14-May-24																												
266	<b>2nd Fixing</b>	58	16-May-24	24-Jul-24																												
267	Cable Laying - NCPS	10	16-May-24	27-May-24																												

- ◆ Milestone
- Planned Bar
- Critical Bar

**ED/2018/04 Trunk Road T2 and Infrastructure Works  
for Developments at South Apron**

**Three Months Rolling Programme (Apr-24)**



Date	Revision	Checked	Approved
31-Jan-24	Rev. A	SPa	





#	Activity Name	Dur	Start	Finish	2024																							
					March			April				May				June				July				August				
					17	24	31	07	14	21	28	05	12	19	26	02	09	16	23	30	07	14	21	28	04	11	18	25
308	<b>3rd section CH7607-8107 - (500m) WB CPS &amp; NCPS + EB CPS</b>	130	15-Mar-24	22-Aug-24																								
309	<b>E&amp;M Installation (BYME)</b>	130	15-Mar-24	22-Aug-24																								
310	<b>CP side</b>	78	27-Mar-24	04-Jul-24																								
311	1st Fixing	24	27-Mar-24	27-Apr-24																								
312	E&M Bracket installation	24	27-Mar-24	27-Apr-24																								
313	2nd Fixing	54	29-Apr-24	04-Jul-24																								
314	Cable Laying - CPS	10	29-Apr-24	10-May-24																								
315	Cable Fixing - CPS	24	11-May-24	08-Jun-24																								
316	Cable Joint works - CPS	20	11-Jun-24	04-Jul-24																								
317	<b>OHVD Soffit</b>	130	15-Mar-24	22-Aug-24																								
318	1st Fixing	52	15-Mar-24	21-May-24																								
319	OHVD Soffit Fire Board completion (BTP)	0		15-Mar-24*																								
320	Black paint painting	6	08-Apr-24	13-Apr-24																								
321	Linear Heat Detection Cable bracket, Containment Installation - (	30	15-Apr-24	21-May-24																								
322	2nd Fixing	38	11-Jun-24	25-Jul-24																								
323	Tunnel Damper Wiring Works - OHVD	30	11-Jun-24	16-Jul-24																								
324	Final Circuit Installation - OHVD	24	27-Jun-24	25-Jul-24																								
325	Final Fixing	24	26-Jul-24	22-Aug-24																								
326	Tunnel Lighting Installation - OHVD	24	26-Jul-24	22-Aug-24																								
327	<b>Non CP side</b>	60	30-May-24	09-Aug-24																								
328	1st Fixing	12	30-May-24	13-Jun-24																								
329	NCPS Fire Board completion	0		13-Jun-24																								
330	E&M Bracket	12	30-May-24	13-Jun-24																								
331	2nd Fixing	48	14-Jun-24	09-Aug-24																								
332	Cable Laying - NCPS	10	14-Jun-24	25-Jun-24																								
333	Cable Fixing - NCPS	14	26-Jun-24	12-Jul-24																								
334	Smartone / CSL / GOFS by others	24	13-Jul-24	09-Aug-24																								
335	<b>5th section CH8550-8979 - (426m) WB &amp; EB CPS + NCPS</b>	24	14-Mar-24	15-Apr-24																								
336	<b>E&amp;M Installation (BYME)</b>	24	14-Mar-24	15-Apr-24																								
337	<b>Non CP side</b>	24	14-Mar-24	15-Apr-24																								
338	1st Fixing	24	14-Mar-24	15-Apr-24																								
339	NCPS Fire Board completion	0		14-Mar-24*																								
340	E&M Bracket	24	14-Mar-24	15-Apr-24																								
341	<b>Sub-sea Eastbound NCPS</b>	72	31-May-24	24-Aug-24																								
342	<b>1st section CH6703-7109 - (406m)</b>	72	31-May-24	24-Aug-24																								
343	<b>E&amp;M Installation (BYME)</b>	72	31-May-24	24-Aug-24																								
344	<b>Non CP side</b>	72	31-May-24	24-Aug-24																								
345	<b>1st Fixing</b>	24	31-May-24	28-Jun-24																								
346	E&M Bracket	24	31-May-24	28-Jun-24																								
347	<b>2nd Fixing</b>	48	29-Jun-24	24-Aug-24																								
348	Cable Laying - NCPS	10	29-Jun-24	11-Jul-24																								
349	Cable Fixing - NCPS	14	12-Jul-24	27-Jul-24																								

- ◆ Milestone
- ▬ Planned Bar
- ▬ Critical Bar

ED/2018/04 Trunk Road T2 and Infrastructure Works  
for Developments at South Apron

Three Months Rolling Programme (Apr-24)



Date	Revision	Checked	Approved
31-Jan-24	Rev. A	SPa	



Activity ID	Activity Name	Original Duration	Early Start	Early Finish	Late Start	Late Finish	Actual Start	Actual Finish	Predecessor Details	2024			
										Mar 27	Apr 28	May 29	Jun 30
<b>Trunk Road T2 - Traffic Control &amp; Surveillance System &amp; Associated Works</b>		433	01-Apr-24	09-Jan-25	03-Aug-23	31-Oct-26	01-Mar-23						
<b>Access Dates</b>		57	01-Apr-24	28-May-24	23-May-24	24-Sep-26							
AC1000	Portion 1 - South Apron Up to SUS	0	01-Apr-24		27-May-24								
AC1010	Portion 2 - LSCC, WVB & Adit, EVB	0	01-Apr-24		24-Sep-26								
AC1020	Portion 3 - CKL Branch Tunnel in TKO-LTT Site	0	01-Apr-24		04-Jan-25								
AC1030	Portion 4 - TKO-LTT (LT Interchange)	0	01-Apr-24		23-May-24								
AC1050	Portion 2 - LS - CKL Tunnel CH 6+568 to CH 7+100	0	01-Apr-24		28-Sep-24								
AC1040	Underpass S21	0	04-Apr-24		26-Apr-25								
AC1060	Portion 2 - LS - CKL Tunnel CH 7+100 to CH 7+600	0	13-Apr-24		29-Aug-24								
AC1070	Portion 2 - LS - CKL Tunnel CH 7+600 to CH 8+100	0	28-May-24		15-Oct-24								
<b>Summary by Cost Center</b>		433	01-Apr-24	09-Jan-25	03-Aug-23	31-Oct-26	01-Mar-23						
<b>Cost Center B - Central System</b>		273	01-Apr-24	26-Sep-24	01-Nov-23	11-Apr-25	01-Aug-23						
SC1060	Configuration for Central System	76	01-Apr-24	20-Apr-24	31-Aug-24	31-Aug-24	01-Aug-23		EM1150: SS				
SC1050	FAT of Central System	59	01-Apr-24	20-May-24	01-Nov-23	30-Sep-24	31-Oct-23		EM1150: FS				
SC1070	SCT Plan Submission & Approval for Central System	84	28-May-24	04-Sep-24	02-Dec-24	14-Mar-25			DS2940: SS				
SC1080	Site Installation of Central System	64	28-May-24	12-Aug-24	08-Oct-24	17-Feb-25			SW1100: SS, SW1120: SS, SW1960: SS, SW1090: SS, SW1670: SS, SW1770: SS				
SC1090	SAT Plan Submission & Approval for Central System	78	26-Jun-24	26-Sep-24	07-Jan-25	11-Apr-25			DS3500: SS				
<b>Cost Center C - Traffic Control Devices</b>		111	01-Apr-24	30-Jun-24	16-Aug-24	16-Aug-24	31-Aug-23						
SC1150	Installation Drawing Preparation, Submission & Approval for Traffic Control Devices	72	01-Apr-24	26-Apr-24	16-Aug-24	16-Aug-24	31-Aug-23		DS5890: SS				
SC1190	Equipment Manufacturing & Delivery for Traffic Control Devices	135	01-Apr-24	30-Jun-24	16-Aug-24	16-Aug-24	16-Sep-23		EM1320: SS				
<b>Cost Center D - Communication System</b>		222	01-Apr-24	12-Aug-24	08-Oct-24	14-Mar-25	01-Oct-23						
SC1320	Equipment Manufacturing & Delivery for Communication System	104					01-Oct-23	07-Mar-24	EM1040: SS				
SC1310	FAT of Communication System	10					29-Feb-24	07-Mar-24	EM1040: FS				
SC1340	SCT Plan Submission & Approval for Communication System	84	01-Apr-24	12-Jul-24	24-Oct-24	14-Mar-25			DS3020: SS				
SC1350	SAT Plan Submission & Approval for Communication System	80	16-Apr-24	22-Jul-24	07-Nov-24	13-Feb-25			DS3580: SS				
SC1330	Site Installation of Communication System	56	06-Jun-24	12-Aug-24	08-Oct-24	17-Feb-25			SW1100: SS, SW1120: SS, SW1960: SS				
<b>Cost Center E - CCTV System</b>		383	01-Apr-24	09-Jan-25	01-Nov-23	31-Oct-26	01-Mar-23						
SC1410	Installation Drawing Preparation, Submission & Approval for CCTV System	99	01-Apr-24	26-Apr-24	31-Oct-26	31-Oct-26	01-Mar-23		DS5970: SS				
SC1450	Equipment Manufacturing & Delivery for CCTV System	89	01-Apr-24	24-Apr-24	11-Aug-24	11-Aug-24	01-Aug-23		EM1050: SS				
SC1440	FAT of CCTV System	96	01-Apr-24	26-Apr-24	01-Nov-23	13-Aug-24	31-Oct-23		EM1050: FS				
SC1430	FAT Plan Submission & Approval for CCTV System	72	01-Apr-24	24-Apr-24	10-Aug-24	10-Aug-24	13-Dec-23		DS4050: SS				
SC1460	SCT Plan Submission & Approval for CCTV System	84	01-Apr-24	12-Jul-24	03-Sep-24	09-Jan-25			DS3060: SS				
SC1480	SAT Plan Submission & Approval for CCTV System	84	30-May-24	06-Sep-24	01-Nov-24	12-Feb-25			DS3620: SS				
SC1470	Site Installation of CCTV System	162	28-Jun-24	09-Jan-25	10-Sep-24	05-Mar-25			SW1060: SS, SW1940: SS				
<b>Cost Center F - PABX System</b>		305	01-Apr-24	07-Oct-24	08-Oct-24	24-Apr-25	27-Jul-23						
SC1560	Installation Drawing Preparation, Submission & Approval for PABX System	68	01-Apr-24	26-Apr-24	08-Oct-24	08-Oct-24	27-Jul-23		DS6010: SS				
SC1580	Equipment Manufacturing & Delivery for PABX System	105					01-Aug-23	19-Mar-24	EM1060: SS				
SC1570	FAT of PABX System	10					18-Mar-24	19-Mar-24	EM1060: FS				
SC1600	SCT Plan Submission & Approval for PABX System	84	01-Apr-24	12-Jul-24	18-Oct-24	12-Mar-25			DS3100: SS				
SC1610	SAT Plan Submission & Approval for PABX System	84	28-Jun-24	07-Oct-24	13-Jan-25	24-Apr-25			DS3660: SS				
<b>Cost Center G - ET System</b>		200	01-Apr-24	21-Sep-24	22-Jun-24	12-Mar-25	01-Aug-23						
SC1710	Equipment Manufacturing & Delivery for ET System	105					01-Aug-23	12-Mar-24	EM1070: SS				
SC1700	FAT of ET System	10					11-Mar-24	12-Mar-24	EM1070: FS				



Activity ID	Activity Name	Original Duration	Early Start	Early Finish	Late Start	Late Finish	Actual Start	Actual Finish	Predecessor Details	2024			
										Mar 27	Apr 28	May 29	Jun 30
SC1690	Installation Drawing Preparation, Submission & Approval for ET System	72	01-Apr-24	27-Jun-24	22-Jun-24	27-Dec-24			DS6050: SS				
SC1730	SCT Plan Submission & Approval for ET System	84	01-Apr-24	12-Jul-24	17-Sep-24	11-Jan-25			DS3140: SS				
SC1740	SAT Plan Submission & Approval for ET System	84	14-Jun-24	21-Sep-24	29-Nov-24	12-Mar-25			DS3700: SS				
<b>Cost Center H - PA System</b>		<b>305</b>	<b>01-Apr-24</b>	<b>07-Oct-24</b>	<b>23-Sep-24</b>	<b>10-Apr-25</b>	<b>31-Aug-23</b>						
SC1820	Installation Drawing Preparation, Submission & Approval for PA System	72	01-Apr-24	26-Apr-24	23-Sep-24	23-Sep-24	31-Aug-23		DS6090: SS				
SC1850	SCT Plan Submission & Approval for PA System	84	01-Apr-24	12-Jul-24	03-Oct-24	12-Feb-25			DS3180: SS				
SC1870	SAT Plan Submission & Approval for PA System	84	28-Jun-24	07-Oct-24	28-Dec-24	10-Apr-25			DS3740: SS				
<b>Cost Center I - Radio System</b>		<b>269</b>	<b>01-Apr-24</b>	<b>07-Oct-24</b>	<b>01-Feb-24</b>	<b>08-Mar-25</b>	<b>01-Aug-23</b>						
SC1970	Equipment Manufacturing & Delivery for Radio System	119	01-Apr-24	23-Apr-24	14-Oct-24	14-Oct-24	01-Aug-23		EM1090: SS				
SC1950	FAT Plan Submission & Approval for Radio System	60	01-Apr-24	23-Apr-24	14-Oct-24	14-Oct-24	28-Dec-23		DS4350: SS				
SC1960	FAT of Radio System	14	01-Apr-24	25-Apr-24	01-Feb-24	16-Oct-24	31-Jan-24		EM1090: FS				
SC1930	Installation Drawing Preparation, Submission & Approval for Radio System	60	01-Apr-24	13-Jun-24	22-Jul-24	23-Oct-24			DS6130: SS				
SC1980	SCT Plan Submission & Approval for Radio System	84	01-Apr-24	12-Jul-24	27-Aug-24	08-Mar-25			DS3220: SS				
SC2000	SAT Plan Submission & Approval for Radio System	84	28-Jun-24	07-Oct-24	22-Nov-24	05-Mar-25			DS3780: SS				
<b>Cost Center J - Detection System</b>		<b>202</b>	<b>01-Apr-24</b>	<b>12-Jul-24</b>	<b>01-Nov-23</b>	<b>31-Oct-26</b>	<b>24-May-23</b>						
SC2060	Installation Drawing Preparation, Submission & Approval for Detection System	124	01-Apr-24	12-Apr-24	31-Oct-26	31-Oct-26	24-May-23		DS6170: SS				
SC2100	Equipment Manufacturing & Delivery for Detection System	90	01-Apr-24	20-Jun-24	11-Aug-24	11-Aug-24	01-Aug-23		EM1100: SS				
SC2090	FAT of Detection System	87	01-Apr-24	22-Jun-24	01-Nov-23	13-Aug-24	31-Oct-23		EM1100: FS				
SC2080	FAT Plan Submission & Approval for Detection System	66	01-Apr-24	20-Jun-24	24-May-24	10-Aug-24			DS4450: SS				
SC2110	SCT Plan Submission & Approval for Detection System	84	01-Apr-24	12-Jul-24	09-Sep-24	17-Jan-25			DS3260: SS				
<b>Cost Center K - Manual Fallback System</b>		<b>186</b>	<b>01-Apr-24</b>	<b>13-Sep-24</b>	<b>09-Sep-24</b>	<b>14-Mar-25</b>	<b>01-Aug-23</b>						
SC2220	FAT of Manual Fallback System	60	01-Apr-24	30-Apr-24	09-Sep-24	09-Sep-24	01-Aug-23		EM1640: SS				
SC2190	Installation Drawing Preparation, Submission & Approval for Manual Fallback System	60	01-Apr-24	26-Apr-24	08-Jan-25	08-Jan-25	31-Aug-23		DS6210: SS				
SC2200	Post FAT Configuration for Manual Fallback System	90	01-May-24	29-Jul-24	10-Sep-24	08-Jan-25			EM1540: FS				
SC2250	SCT Plan Submission & Approval for Manual Fallback System	84	08-May-24	16-Aug-24	17-Sep-24	14-Mar-25			DS3300: SS				
SC2270	SAT Plan Submission & Approval for Manual Fallback System	84	06-Jun-24	13-Sep-24	18-Oct-24	25-Jan-25			DS3860: SS				
<b>Cost Center L - Speed Enforcement System</b>		<b>108</b>	<b>01-Apr-24</b>	<b>09-Aug-24</b>	<b>23-Sep-24</b>	<b>11-Apr-25</b>							
SC2340	Installation Drawing Preparation, Submission & Approval for Speed Enforcement System	60	01-Apr-24	13-Jun-24	23-Sep-24	01-Mar-25			DS6290: SS				
SC2370	SCT Plan Submission & Approval for Speed Enforcement System	84	01-Apr-24	12-Jul-24	30-Nov-24	22-Mar-25			DS3380: SS				
SC2380	Reliability Test Plan Submission & Approval for Speed Enforcement System	84	30-Apr-24	09-Aug-24	30-Dec-24	11-Apr-25			DS3940: SS				
<b>Cost Center M - Power Distribution System</b>		<b>282</b>	<b>01-Apr-24</b>	<b>07-Sep-24</b>	<b>28-Sep-23</b>	<b>21-Nov-24</b>	<b>30-Aug-23</b>						
SC2460	Installation Drawing Preparation, Submission & Approval for Power Distribution System	60	01-Apr-24	26-Apr-24	27-Jun-24	27-Jun-24	30-Aug-23		DS6370: SS				
SC2470	Equipment Manufacturing & Delivery for Power Distribution System	98	01-Apr-24	30-May-24	28-Sep-23	12-Aug-24	27-Sep-23		DS2592: FS				
SC2490	SCT Plan Submission & Approval for Power Distribution System	84	31-May-24	07-Sep-24	13-Aug-24	21-Nov-24			DS3420: SS				
<b>Cost Center N - Government Optical Fibre System</b>		<b>332</b>	<b>01-Apr-24</b>	<b>07-Sep-24</b>	<b>03-Aug-23</b>	<b>28-Apr-25</b>	<b>02-Aug-23</b>						
SC2560	Equipment Manufacturing & Delivery for Government Optical Fibre System	111	01-Apr-24	30-May-24	03-Aug-23	19-Nov-24	02-Aug-23		DS2650: FS 200				
SC2550	Installation Drawing Preparation, Submission & Approval for Government Optical Fibre System	60	01-Apr-24	13-Jun-24	07-Sep-24	19-Nov-24			DS6330: SS				
SC2580	SCT Plan Submission & Approval for Government Optical Fibre System	84	31-May-24	07-Sep-24	16-Jan-25	28-Apr-25			DS3460: SS				
<b>Operation Facilities</b>		<b>125</b>	<b>01-Apr-24</b>	<b>14-Jul-24</b>	<b>22-May-24</b>	<b>20-Jan-25</b>	<b>01-Aug-23</b>						
SC2660	FAT of Operation Facilities	78	01-Apr-24	14-Jul-24	31-Aug-24	31-Aug-24	01-Aug-23		EM1560: SS				
SC2630	Installation Drawing Preparation, Submission & Approval for Operation Facilities	60	01-Apr-24	13-Jun-24	09-Nov-24	20-Jan-25			DS6250: SS				
SC2650	FAT Plan Submission & Approval for Operation Facilities	81	01-Apr-24	09-Jul-24	22-May-24	26-Aug-24			DS4600: SS				
<b>Design &amp; Submissions</b>		<b>304</b>	<b>01-Apr-24</b>	<b>17-Jun-24</b>	<b>13-Jun-24</b>	<b>25-Jun-25</b>	<b>29-Aug-23</b>						



**GTECH Services (Hong Kong) Limited**

■ Remaining Work   
 ■ Actual Work   
 ■ Critical Activity   
 ◆ Milestone

Date	Revision	Checked	Approved
31-Mar-24	Rev. 0	MY	

Activity ID	Activity Name	Original Duration	Early Start	Early Finish	Late Start	Late Finish	Actual Start	Actual Finish	Predecessor Details	2024			
										Mar 27	Apr 28	May 29	Jun 30
<b>FSP Submissions (42 Working Days after Commencement of FSP)</b>		304	01-Apr-24	17-Jun-24	13-Jun-24	25-Jun-25	29-Aug-23						
<b>FSP Batch 1 Submission</b>		304	01-Apr-24	17-Jun-24	13-Jun-24	25-Jun-25	29-Aug-23						
<b>Central System</b>		304	01-Apr-24	17-Jun-24	13-Jun-24	25-Jun-25	29-Aug-23						
<b>Traffic Plan Review &amp; Combine</b>		140	01-Apr-24	17-Jun-24	13-Jun-24	26-Aug-24	28-Dec-23						
DS7300	Traffic Plan Review & Combine Workshop	140	01-Apr-24	17-Jun-24	13-Jun-24	26-Aug-24	28-Dec-23		DS1830: FS 22				
<b>IT Security Risk Assessment Plan</b>		30	01-Apr-24	01-Apr-24	25-Jun-25	25-Jun-25	29-Aug-23						
DS7440	Approval on IT Security Risk Assessment Plan	30	01-Apr-24	01-Apr-24	25-Jun-25	25-Jun-25	29-Aug-23		DS7430: FS				
<b>Interface Coordination &amp; Integration with Other Parties</b>		96	01-Apr-24	26-Jul-24	11-May-26	03-Oct-26							
<b>Interfacing Coordination with CKR (KTE)</b>		90	01-Apr-24	19-Jul-24	17-Jun-26	03-Oct-26							
<b>Detail Interfacing Management Plan (DIMP)</b>		90	01-Apr-24	19-Jul-24	17-Jun-26	03-Oct-26							
DS6610	Prepare & Submit DIMP with CKR (KTE)	73	01-Apr-24	28-Jun-24	17-Jun-26	11-Sep-26			DS6600: FS 96				
DS6620	Comment on DIMP with CKR (KTE)	17	29-Jun-24	19-Jul-24	12-Sep-26	03-Oct-26			DS6610: FS				
<b>Interfacing Coordination with CKR (BEM)</b>		90	01-Apr-24	19-Jul-24	17-Jun-26	03-Oct-26							
<b>Detail Interfacing Management Plan (DIMP)</b>		90	01-Apr-24	19-Jul-24	17-Jun-26	03-Oct-26							
DS6690	Prepare & Submit DIMP with CKR (BEM)	73	01-Apr-24	28-Jun-24	17-Jun-26	11-Sep-26			DS6600: FS 96				
DS6700	Comment on DIMP with CKR (BEM)	17	29-Jun-24	19-Jul-24	12-Sep-26	03-Oct-26			DS6690: FS				
<b>Interfacing Coordination with TKO-LTT (Civil)</b>		76	01-Apr-24	03-Jul-24	12-Jun-26	10-Sep-26							
<b>Detail Interfacing Management Plan (DIMP)</b>		76	01-Apr-24	03-Jul-24	12-Jun-26	10-Sep-26							
DS6770	Prepare & Submit DIMP with TKO-LTT (Civil)	76	01-Apr-24	03-Jul-24	12-Jun-26	10-Sep-26			DS6760: FS 96				
<b>Interfacing Coordination with TKO-LTT (TCSS)</b>		76	01-Apr-24	03-Jul-24	16-Jun-26	14-Sep-26							
<b>Detail Interfacing Management Plan (DIMP)</b>		76	01-Apr-24	03-Jul-24	16-Jun-26	14-Sep-26							
DS6850	Prepare & Submit DIMP with TKO-LTT (TCSS)	76	01-Apr-24	03-Jul-24	16-Jun-26	14-Sep-26			DS6840: FS 108				
<b>Interfacing Coordination with T2</b>		96	01-Apr-24	26-Jul-24	11-May-26	02-Sep-26							
<b>Preliminary Interfacing Management Plan (PIMP)</b>		72	01-Apr-24	27-Jun-24	11-May-26	05-Aug-26							
DS6890	Prepare & Submit PIMP with T2	24	01-Apr-24	29-Apr-24	11-May-26	08-Jun-26			DS2680: FS 211				
DS6900	Comment on PIMP with T2	24	30-Apr-24	29-May-24	09-Jun-26	08-Jul-26			DS6890: FS				
DS6910	Resubmit PIMP with T2	12	30-May-24	13-Jun-24	09-Jul-26	22-Jul-26			DS6900: FS				
DS6920	Approval of PIMP with T2	12	14-Jun-24	27-Jun-24	23-Jul-26	05-Aug-26			DS6910: FS				
<b>Detail Interfacing Management Plan (DIMP)</b>		24	28-Jun-24	26-Jul-24	06-Aug-26	02-Sep-26							
DS6930	Prepare & Submit DIMP with T2	24	28-Jun-24	26-Jul-24	06-Aug-26	02-Sep-26			DS6920: FS				
<b>Drawing &amp; Installation Method Statement Submissions</b>		188	01-Apr-24	11-Jul-24	06-Apr-24	31-Oct-26	10-Aug-23						
<b>Installation Drawing Submission</b>		185	01-Apr-24	08-Jul-24	06-Apr-24	31-Oct-26	08-Sep-23						
DS2695	Prepare & Submit Schedule of Installation Drawing	30	01-Apr-24	07-May-24	06-Apr-24	11-May-24			DS1050: FS 103				
DS2705	Approval of Schedule of Installation Drawing	50	08-May-24	08-Jul-24	13-May-24	12-Jul-24			DS2695: FS				
<b>Traffic Control Devices</b>		125	01-Apr-24	26-Apr-24	23-Jul-24	16-Aug-24	07-Oct-23						
DS5910	Resubmit Installation Drawing for Traffic Control Devices	12	01-Apr-24	12-Apr-24	23-Jul-24	02-Aug-24	07-Oct-23		DS5900: FS				
DS5920	Approval of Installation Drawing for Traffic Control Devices	12	13-Apr-24	26-Apr-24	03-Aug-24	16-Aug-24			DS5910: FS, SC1150: FF				
<b>CCTV System</b>		58	01-Apr-24	26-Apr-24	06-Oct-26	31-Oct-26	13-Dec-23						
DS8020	Resubmit Installation Drawing for CCTV System	26	01-Apr-24	12-Apr-24	06-Oct-26	16-Oct-26	13-Dec-23		DS8010: FS				
DS8030	Approval of Installation Drawing for CCTV System	12	13-Apr-24	26-Apr-24	17-Oct-26	31-Oct-26			DS8020: FS, SC1410: FF				
<b>PABX System</b>		127	01-Apr-24	26-Apr-24	11-Sep-24	08-Oct-24	08-Sep-23						
DS6030	Resubmit Installation Drawing for PABX System	12	01-Apr-24	12-Apr-24	11-Sep-24	23-Sep-24	08-Sep-23		DS6020: FS				
DS6040	Approval of Installation Drawing for PABX System	12	13-Apr-24	26-Apr-24	24-Sep-24	08-Oct-24			DS6030: FS, SC1560: FF				
<b>ET System</b>		72	01-Apr-24	27-Jun-24	22-Jun-24	27-Dec-24							
DS6050	Prepare & Submit Installation Drawing for ET System	24	01-Apr-24	29-Apr-24	22-Jun-24	20-Jul-24			DS2770: SS 19				
DS6060	Comment on Installation Drawing for ET System	24	30-Apr-24	29-May-24	01-Nov-24	28-Nov-24			DS6050: FS				
DS6070	Resubmit Installation Drawing for ET System	12	30-May-24	13-Jun-24	29-Nov-24	12-Dec-24			DS6060: FS				
DS6080	Approval of Installation Drawing for ET System	12	14-Jun-24	27-Jun-24	13-Dec-24	27-Dec-24			DS6070: FS, SC1690: FF				
<b>PA System</b>		125	01-Apr-24	26-Apr-24	28-Aug-24	23-Sep-24	12-Oct-23						
DS6110	Resubmit Installation Drawing for PA System	12	01-Apr-24	12-Apr-24	28-Aug-24	07-Sep-24	12-Oct-23		DS6100: FS				
DS6120	Approval of Installation Drawing for PA System	12	13-Apr-24	26-Apr-24	09-Sep-24	23-Sep-24			DS6110: FS, SC1820: FF				
<b>Radio System</b>		60	01-Apr-24	13-Jun-24	22-Jul-24	23-Oct-24							
DS6130	Prepare & Submit Installation Drawing for Radio System	12	01-Apr-24	15-Apr-24	22-Jul-24	03-Aug-24			DS2154: FS				
DS6140	Comment on Installation Drawing for Radio System	24	16-Apr-24	14-May-24	26-Aug-24	23-Sep-24			DS6130: FS				



**GTECH Services (Hong Kong) Limited**

■ Remaining Work   
 ■ Actual Work   
 ■ Critical Activity   
 ◆ Milestone

Date	Revision	Checked	Approved
31-Mar-24	Rev. 0	MY	

Activity ID	Activity Name	Original Duration	Early Start	Early Finish	Late Start	Late Finish	Actual Start	Actual Finish	Predecessor Details	2024			
										Mar 27	Apr 28	May 29	Jun 30
DS6150	Resubmit Installation Drawing for Radio System	12	16-May-24	29-May-24	24-Sep-24	08-Oct-24			DS6140: FS				
DS6160	Approval of Installation Drawing for Radio System	12	30-May-24	13-Jun-24	09-Oct-24	23-Oct-24			DS6150: FS, SC1930: FF				
<b>Detection System</b>		12	01-Apr-24	12-Apr-24	21-Oct-26	31-Oct-26	26-Nov-23						
DS6200	Approval of Installation Drawing for Detection System	12	01-Apr-24	12-Apr-24	21-Oct-26	31-Oct-26	26-Nov-23		DS6190: FS, SC2060: FF				
<b>Manual Fallback Control System</b>		34	01-Apr-24	26-Apr-24	12-Dec-24	08-Jan-25	07-Oct-23						
DS6230	Resubmit Installation Drawing for Manual Fallback Control System	12	01-Apr-24	12-Apr-24	12-Dec-24	23-Dec-24	07-Oct-23		DS6220: FS				
DS6240	Approval of Installation Drawing for Manual Fallback Control System	12	13-Apr-24	26-Apr-24	24-Dec-24	08-Jan-25			DS6230: FS, SC2190: FF				
<b>Operation Facility</b>		60	01-Apr-24	13-Jun-24	09-Nov-24	20-Jan-25							
DS6250	Prepare & Submit Installation Drawing for Operation Facility	12	01-Apr-24	15-Apr-24	09-Nov-24	22-Nov-24			DS2532: FS				
DS6260	Comment on Installation Drawing for Operation Facility	24	16-Apr-24	14-May-24	23-Nov-24	20-Dec-24			DS6250: FS				
DS6270	Resubmit Installation Drawing for Operation Facility	12	16-May-24	29-May-24	21-Dec-24	06-Jan-25			DS6260: FS				
DS6280	Approval of Installation Drawing for Operation Facility	12	30-May-24	13-Jun-24	07-Jan-25	20-Jan-25			DS6270: FS, SC2630: FF				
<b>Speed Enforcement System</b>		60	01-Apr-24	13-Jun-24	23-Sep-24	01-Mar-25							
DS6290	Prepare & Submit Installation Drawing for Speed Enforcement System	12	01-Apr-24	15-Apr-24	23-Sep-24	07-Oct-24			DS2472: FS				
DS6300	Comment on Installation Drawing for Speed Enforcement System	24	16-Apr-24	14-May-24	02-Jan-25	01-Feb-25			DS6290: FS				
DS6310	Resubmit Installation Drawing for Speed Enforcement System	12	16-May-24	29-May-24	03-Feb-25	15-Feb-25			DS6300: FS				
DS6320	Approval of Installation Drawing for Speed Enforcement System	12	30-May-24	13-Jun-24	17-Feb-25	01-Mar-25			DS6310: FS, SC2340: FF				
<b>Government Optical Fibre System</b>		60	01-Apr-24	13-Jun-24	07-Sep-24	19-Nov-24							
DS6330	Prepare & Submit Installation Drawing for Government Optical Fibre System	12	01-Apr-24	15-Apr-24	07-Sep-24	21-Sep-24			DS2650: FS, DS2592: SS				
DS6340	Comment on Installation Drawing for Government Optical Fibre System	24	16-Apr-24	14-May-24	23-Sep-24	22-Oct-24			DS6330: FS				
DS6350	Resubmit Installation Drawing for Government Optical Fibre System	12	16-May-24	29-May-24	23-Oct-24	05-Nov-24			DS6340: FS				
DS6360	Approval of Installation Drawing for Government Optical Fibre System	12	30-May-24	13-Jun-24	06-Nov-24	19-Nov-24			DS6350: FS, SC2550: FF				
<b>Power Distribution System</b>		64	01-Apr-24	26-Apr-24	01-Jun-24	27-Jun-24	20-Jan-24						
DS6401	Resubmit Installation Drawing for Power Distribution System	12	01-Apr-24	12-Apr-24	01-Jun-24	13-Jun-24	20-Jan-24		DS6400: FS				
DS6402	Approval of Installation Drawing for Power Distribution System	12	13-Apr-24	26-Apr-24	14-Jun-24	27-Jun-24			DS6401: FS, SC2460: FF				
<b>Installation Method Statement Submission</b>		160	01-Apr-24	11-Jul-24	23-May-24	31-Dec-24	10-Aug-23						
<b>Traffic Control Devices</b>		72	01-Apr-24	27-Jun-24	23-May-24	16-Aug-24							
DS2780	Prepare & Submit Installation Method Statement for Installation of TCSS Field Equipment	24	01-Apr-24	29-Apr-24	23-May-24	20-Jun-24			DS5890: FS 2				
DS2790	Comment on Installation Method Statement for Installation of TCSS Field Equipment	24	30-Apr-24	29-May-24	21-Jun-24	19-Jul-24			DS2780: FS				
DS2800	Resubmit Installation Method Statement for Installation of TCSS Field Equipment	12	30-May-24	13-Jun-24	20-Jul-24	02-Aug-24			DS2790: FS				
DS2810	Approval of Installation Method Statement for Installation of TCSS Field Equipment	12	14-Jun-24	27-Jun-24	03-Aug-24	16-Aug-24			DS2800: FS				
<b>CCTV Camera &amp; VD Camera</b>		72	01-Apr-24	27-Jun-24	27-May-24	20-Aug-24							
DS6410	Prepare & Submit Installation Method Statement for CCTV Camera & VD Camera	24	01-Apr-24	29-Apr-24	27-May-24	24-Jun-24			DS5990: FS, DS6190: FS 2				
DS6420	Comment on Installation Method Statement for CCTV Camera & VD Camera	24	30-Apr-24	29-May-24	25-Jun-24	23-Jul-24			DS6410: FS				
DS6430	Resubmit Installation Method Statement for CCTV Camera & VD Camera	12	30-May-24	13-Jun-24	24-Jul-24	06-Aug-24			DS6420: FS				
DS6440	Approval of Installation Method Statement for CCTV Camera & VD Camera	12	14-Jun-24	27-Jun-24	07-Aug-24	20-Aug-24			DS6430: FS				
<b>PABX, ET &amp; PA Systems</b>		72	09-Apr-24	05-Jul-24	29-Jun-24	23-Sep-24							
DS6450	Prepare & Submit Installation Method Statement for PABX, ET & PA Systems	24	09-Apr-24	07-May-24	29-Jun-24	27-Jul-24			DS6010: FS, DS6050: SS 6, DS6090: FS				
DS6460	Comment on Installation Method Statement for PABX, ET & PA Systems	24	08-May-24	05-Jun-24	29-Jul-24	24-Aug-24			DS6450: FS				



**GTECH Services (Hong Kong) Limited**

■ Remaining Work   
 ■ Actual Work   
 ■ Critical Activity   
 ◆ Milestone

Date	Revision	Checked	Approved
31-Mar-24	Rev. 0	MY	



Activity ID	Activity Name	Original Duration	Early Start	Early Finish	Late Start	Late Finish	Actual Start	Actual Finish	Predecessor Details	2024			
										Mar 27	Apr 28	May 29	Jun 30
DS6470	Resubmit Installation Method Statement for PABX, ET & PA Systems	12	06-Jun-24	20-Jun-24	26-Aug-24	07-Sep-24			DS6460: FS				
DS6480	Approval of Installation Method Statement for PABX, ET & PA Systems	12	21-Jun-24	05-Jul-24	09-Sep-24	23-Sep-24			DS6470: FS				
<b>Radio System</b>		72	09-Apr-24	05-Jul-24	29-Jul-24	23-Oct-24							
DS6490	Prepare & Submit Installation Method Statement for Radio System	24	09-Apr-24	07-May-24	29-Jul-24	24-Aug-24			DS6130: SS 6				
DS6500	Comment on Installation Method Statement for Radio System	24	08-May-24	05-Jun-24	26-Aug-24	23-Sep-24			DS6490: FS				
DS6510	Resubmit Installation Method Statement for Radio System	12	06-Jun-24	20-Jun-24	24-Sep-24	08-Oct-24			DS6500: FS				
DS6520	Approval of Installation Method Statement for Radio System	12	21-Jun-24	05-Jul-24	09-Oct-24	23-Oct-24			DS6510: FS				
<b>Power Distribution System</b>		99	01-Apr-24	26-Apr-24	01-Jun-24	27-Jun-24	10-Aug-23						
DS6550	Resubmit Installation Method Statement for Power Distribution System	6	01-Apr-24	12-Apr-24	01-Jun-24	13-Jun-24	10-Aug-23		DS6540: FS				
DS6560	Approval of Installation Method Statement for Power Distribution System	12	13-Apr-24	26-Apr-24	14-Jun-24	27-Jun-24			DS6550: FS				
<b>SEC System</b>		24	13-Jun-24	11-Jul-24	03-Dec-24	31-Dec-24							
DS7380	Prepare & Submit Installation Method Statement for SEC System	24	13-Jun-24	11-Jul-24	03-Dec-24	31-Dec-24			DS6290: FS 47				
<b>Detection System</b>		72	01-Apr-24	27-Jun-24	27-May-24	20-Aug-24							
DS7470	Prepare & Submit Installation Method Statement for Detection System	24	01-Apr-24	29-Apr-24	27-May-24	24-Jun-24			DS5990: FS, DS6190: FS 2				
DS7480	Comment on Installation Method Statement for Detection System	24	30-Apr-24	29-May-24	25-Jun-24	23-Jul-24			DS7470: FS				
DS7490	Resubmit Installation Method Statement for Detection System	12	30-May-24	13-Jun-24	24-Jul-24	06-Aug-24			DS7480: FS				
DS7500	Approval of Installation Method Statement for Detection System	12	14-Jun-24	27-Jun-24	07-Aug-24	20-Aug-24			DS7490: FS				
<b>FAT Plan Submissions, Equipment Procurement &amp; Manufacturing</b>		216	01-Apr-24	29-Jul-24	18-May-24	31-Oct-26	01-Aug-23						
<b>CCTV System</b>		46	01-Apr-24	03-May-24	19-Jul-24	20-Aug-24	02-Feb-24						
<b>FAT Plan Submission</b>		41	01-Apr-24	24-Apr-24	19-Jul-24	10-Aug-24	02-Feb-24						
DS4070	Resubmission of FAT Plan for CCTV System	12					02-Feb-24	06-Mar-24	DS4060: FS				
DS4080	Comment on FAT Plan/ Workshops (System Briefing & Comment Discussion)	12					07-Mar-24	26-Mar-24	DS4070: FS				
DS8140	Resubmission of FAT Plan for CCTV System	12	01-Apr-24	10-Apr-24	19-Jul-24	27-Jul-24	27-Mar-24		DS4080: FS				
DS8150	Approval of FAT Plan for CCTV System	12	11-Apr-24	24-Apr-24	29-Jul-24	10-Aug-24			DS8140: FS, SC1430: FF				
<b>Equipment FAT &amp; Manufacturing</b>		7	25-Apr-24	03-May-24	12-Aug-24	20-Aug-24							
EM1480	FAT of CCTV System	2	25-Apr-24	26-Apr-24	12-Aug-24	13-Aug-24			SC1440: FF, EM1050: FS, SC1450: FS, DS8150: FS				
DS4090	Submit CCTV System FAT Test Report	1	03-May-24	03-May-24	20-Aug-24	20-Aug-24			EM1480: FS 6				
<b>PABX System</b>		141					01-Aug-23	21-Mar-24					
<b>Equipment FAT &amp; Manufacturing</b>		141					01-Aug-23	21-Mar-24					
EM1060	Manufacturing & Delivery of PABX System	105					01-Aug-23	18-Mar-24	DS2750: FS, DS7570: FS				
EM1490	FAT of PABX System	10					19-Mar-24	19-Mar-24	DS4130: FS, SC1570: FF, EM1060: FS, SC1580: FS				
DS4140	Submit PABX System FAT Test Report	1					20-Mar-24	21-Mar-24	EM1490: FS 6				
<b>ET System</b>		85					01-Aug-23	15-Mar-24					
<b>Equipment FAT &amp; Manufacturing</b>		85					01-Aug-23	15-Mar-24					
EM1070	Manufacturing & Delivery of ET System	105					01-Aug-23	11-Mar-24	DS2770: FS 118, DS7580: FS				
EM1500	FAT of ET System	10					12-Mar-24	12-Mar-24	DS4180: FS, SC1700: FF, EM1070: FS, SC1710: FS				
DS4190	Submit ET System FAT Test Report	1					15-Mar-24	15-Mar-24	EM1500: FS 6				
<b>PA System</b>		1					29-Feb-24	01-Mar-24					
<b>Equipment FAT &amp; Manufacturing</b>		1					29-Feb-24	01-Mar-24					
DS4240	Submit PA System FAT Test Report	1					29-Feb-24	01-Mar-24	EM1510: FS 6				
<b>Traffic Control Devices</b>		96	01-Apr-24	30-Jun-24	18-May-24	16-Aug-24	10-Oct-23						
<b>Equipment FAT &amp; Manufacturing</b>		96	01-Apr-24	30-Jun-24	18-May-24	16-Aug-24	10-Oct-23						
<b>PVMS</b>		85	01-Apr-24	30-Jun-24	18-May-24	16-Aug-24	10-Oct-23						



**GTECH Services (Hong Kong) Limited**

■ Remaining Work   
 ■ Actual Work   
 ■ Critical Activity   
 ◆ Milestone

Date	Revision	Checked	Approved
31-Mar-24	Rev. 0	MY	

Activity ID	Activity Name	Original Duration	Early Start	Early Finish	Late Start	Late Finish	Actual Start	Actual Finish	Predecessor Details	2024			
										Mar 27	Apr 28	May 29	Jun 30
EM1030	Post-FAT Manufacturing & Delivery of Traffic Control Devices (PVMS)	85	01-Apr-24	30-Jun-24	18-May-24	16-Aug-24	10-Oct-23		DS4290: FF, SC1190: FF, EM1460: FS				
<b>LED Signage</b>		96	01-Apr-24	04-Jun-24	13-Jun-24	16-Aug-24	26-Feb-24						
EM1461	FAT of Traffic Control Devices (LED Signage)	13					26-Feb-24	01-Mar-24	EM1460: FS, EM1320: FS, SC1181: FS, DS8110: FS				
DS4291	Submit Traffic Control Devices FAT Test Report (LED Signage)	1					02-Mar-24	05-Mar-24	EM1461: FS				
DS8160	Resubmit Traffic Control Devices FAT Test Report (LED Signage)	1					06-Mar-24	11-Mar-24	DS4291: FS				
EM1650	Post-FAT Manufacturing & Delivery of Traffic Control Devices (LED Signage)	85	01-Apr-24	04-Jun-24	13-Jun-24	16-Aug-24	12-Mar-24		EM1461: FS, SC1190: FF, DS4291: FS, DS8160: FS				
<b>Central System</b>		55	01-Apr-24	27-May-24	13-Aug-24	07-Oct-24	20-Feb-24						
<b>FAT Plan Submission</b>		40	01-Apr-24	20-Apr-24	13-Aug-24	31-Aug-24	20-Feb-24						
DS8120	Resubmission of FAT Plan for Central System	12					20-Feb-24	26-Mar-24	DS4330: FS				
DS8130	Approval of FAT Plan for Central System	21	01-Apr-24	20-Apr-24	13-Aug-24	31-Aug-24	27-Mar-24		DS8120: FS				
<b>Equipment FAT &amp; Manufacturing</b>		29	21-Apr-24	27-May-24	01-Sep-24	07-Oct-24							
EM1580	FAT of Central System	30	21-Apr-24	20-May-24	01-Sep-24	30-Sep-24			SC1050: FF, EM1150: FS, SC1060: FS, DS8130: FS				
DS4340	Submit Central System FAT Test Report	1	27-May-24	27-May-24	07-Oct-24	07-Oct-24			EM1580: FS 6				
<b>Radio System</b>		45	01-Apr-24	02-May-24	20-Sep-24	23-Oct-24	02-Feb-24						
<b>FAT Plan Submission</b>		38	01-Apr-24	23-Apr-24	20-Sep-24	14-Oct-24	02-Feb-24						
DS4370	Resubmission of FAT Plan for Radio System	12					02-Feb-24	29-Feb-24	DS4360: FS				
DS4380	Comment on FAT Plan/ Workshops (System Briefing & Comment Discussion)	12					01-Mar-24	25-Mar-24	DS4370: FS				
DS8200	Resubmission of FAT Plan for Radio System	12	01-Apr-24	09-Apr-24	20-Sep-24	27-Sep-24	26-Mar-24		DS4380: FS				
DS8210	Approval of FAT Plan for Radio System	12	10-Apr-24	23-Apr-24	28-Sep-24	14-Oct-24			DS8200: FS, SC1950: FF				
<b>Equipment FAT &amp; Manufacturing</b>		7	24-Apr-24	02-May-24	15-Oct-24	23-Oct-24							
EM1520	FAT of Radio Distribution Network	2	24-Apr-24	25-Apr-24	15-Oct-24	16-Oct-24			EM1090: FS, SC1970: FS, SC1960: FF, DS8210: FS				
EM1610	FAT of Radio O&M (Mobile & Portable)	2	24-Apr-24	25-Apr-24	15-Oct-24	16-Oct-24			EM1090: FS, SC1970: FS, SC1960: FF, DS8210: FS				
DS4390	Submit Radio System FAT Test Report	1	02-May-24	02-May-24	23-Oct-24	23-Oct-24			EM1610: FS 6, EM1520: FS 6				
<b>Communication System</b>		125	01-Apr-24	11-Apr-24	22-Oct-26	31-Oct-26	01-Oct-23						
<b>Equipment FAT &amp; Manufacturing</b>		125	01-Apr-24	11-Apr-24	22-Oct-26	31-Oct-26	01-Oct-23						
EM1040	Manufacturing & Delivery of Communication System	104					01-Oct-23	29-Feb-24	DS2350: FS 144, DS7630: FS, DS2352: FS				
EM1470	FAT of Communication System	10					07-Mar-24	07-Mar-24	DS4430: FS, EM1040: FS, SC1310: FF, SC1320: FS				
DS4440	Submit Communication System FAT Test Report	1					08-Mar-24	19-Mar-24	EM1470: FS 6				
DS8170	Comment on FAT Report	12					20-Mar-24	25-Mar-24	DS4440: FS				
DS8180	Submit Communication System FAT Test Report	1					26-Mar-24	27-Mar-24	DS8170: FS				
DS8190	Approval of FAT Report for Communication System	12	01-Apr-24	11-Apr-24	22-Oct-26	31-Oct-26	28-Mar-24		DS8180: FS				
<b>Detection System</b>		74	01-Apr-24	29-Jun-24	24-May-24	20-Aug-24							
<b>FAT Plan Submission</b>		66	01-Apr-24	20-Jun-24	24-May-24	10-Aug-24							
DS4450	Submission of Detection System FAT Plan	18	01-Apr-24	22-Apr-24	24-May-24	14-Jun-24			DS2232: FS				
DS4460	Comment on FAT Plan/ Workshops (System Briefing & Comment Discussion)	24	23-Apr-24	22-May-24	15-Jun-24	13-Jul-24			DS4450: FS				
DS4470	Resubmission of FAT Plan for Detection System	12	23-May-24	05-Jun-24	15-Jul-24	27-Jul-24			DS4460: FS				
DS4480	Approval of FAT Plan for Detection System	12	06-Jun-24	20-Jun-24	29-Jul-24	10-Aug-24			DS4470: FS, SC2080: FF				
<b>Equipment FAT &amp; Manufacturing</b>		8	21-Jun-24	29-Jun-24	12-Aug-24	20-Aug-24							
EM1530	FAT of Detection System	2	21-Jun-24	22-Jun-24	12-Aug-24	13-Aug-24			DS4480: FS, SC2090: FF, EM1100: FS, SC2100: FS				
DS4490	Submit Detection System FAT Test Report	1	29-Jun-24	29-Jun-24	20-Aug-24	20-Aug-24			EM1530: FS 6				
<b>Power Distribution System</b>		89	01-Apr-24	30-May-24	14-Jun-24	12-Aug-24	01-Dec-23						
<b>Equipment Manufacturing</b>		89	01-Apr-24	30-May-24	14-Jun-24	12-Aug-24	01-Dec-23						
EM1620	Manufacturing & Delivery of Power Distribution System Equipment	89	01-Apr-24	30-May-24	14-Jun-24	12-Aug-24	01-Dec-23		SC2470: FF, DS7650: FS, DS2592: FS				



■ Remaining Work    ◆ Milestone  
■ Actual Work  
■ Critical Activity

Date	Revision	Checked	Approved
31-Mar-24	Rev. 0	MY	

Activity ID	Activity Name	Original Duration	Early Start	Early Finish	Late Start	Late Finish	Actual Start	Actual Finish	Predecessor Details	2024			
										Mar 27	Apr 28	May 29	Jun 30
<b>Government Optical Fibre System</b>													
<b>Equipment Manufacturing</b>													
EM1630	Manufacturing & Delivery of Government Optical Fibre System Equipment	105	01-Apr-24	30-May-24	21-Sep-24	19-Nov-24	01-Dec-23		DS2650: FS 200, SC2560: FF, DS7660: FS				
<b>Operation Facilities</b>													
<b>FAT Plan Submission</b>													
DS4600	Submission of Operation Facility FAT Plan	24	01-Apr-24	29-Apr-24	22-May-24	19-Jun-24			DS2532: FS				
DS4610	Comment on FAT Plan/ Workshops (System Briefing & Comment Discussion)	24	30-Apr-24	29-May-24	20-Jun-24	18-Jul-24			DS4600: FS				
DS4620	Resubmission of FAT Plan for Operation Facility	12	30-May-24	13-Jun-24	19-Jul-24	01-Aug-24			DS4610: FS				
DS4630	Approval of FAT Plan for Operation Facility	21	14-Jun-24	09-Jul-24	02-Aug-24	26-Aug-24			DS4620: FS, SC2650: FF				
<b>Speed Enforcement System</b>													
<b>FAT Plan Submission</b>													
DS4670	Submission of SES Bench Test Plan	24					21-Feb-24	19-Mar-24	DS4650: FS				
DS4690	Comment of SES Bench Test Plan/ Workshops (System Briefing & Comment Discussion)	24	01-Apr-24	17-Apr-24	01-Sep-26	16-Sep-26	20-Mar-24		DS4670: FS				
DS4710	Resubmission of SES Bench Test Plan	12	18-Apr-24	02-May-24	17-Sep-26	02-Oct-26			DS4690: FS				
DS4720	Approval of SES Bench Test Plan	12	03-May-24	17-May-24	03-Oct-26	16-Oct-26			DS4710: FS				
<b>Equipment FAT &amp; Manufacturing</b>													
EM1600	SEC System Bench Test	2	18-May-24	19-May-24	17-Oct-26	18-Oct-26			EM1570: FS 60, DS4720: FS				
DS4740	Submit SEC System Bech Test Report	1	01-Jun-24	01-Jun-24	31-Oct-26	31-Oct-26			EM1600: FS 12				
<b>Manual Fallback Control System</b>													
<b>Equipment FAT &amp; Manufacturing</b>													
EM1540	FAT of Manual Fallback Control System	30	01-Apr-24	30-Apr-24	11-Aug-24	09-Sep-24			DS4780: FS, SC2220: FF, EM1640: FS, DS7690: FS				
EM1110	Post-FAT Configuration of Manual Fallback Control System	90	01-May-24	29-Jul-24	11-Oct-24	08-Jan-25			EM1540: FS, DS4790: FF, SC2200: FF				
DS4790	Submit Manual Fallback Control System FAT Test Report	1	07-May-24	07-May-24	16-Sep-24	16-Sep-24			EM1540: FS 6				
<b>SCT Plan Submissions</b>													
<b>Central System</b>													
DS2940	Submission of Central System SCT Plan	24	28-May-24	25-Jun-24	02-Dec-24	30-Dec-24			DS4340: FS				
DS2950	Comment on SCT Plan/ Workshops (System Briefing & Comment Discussion)	24	26-Jun-24	24-Jul-24	31-Dec-24	28-Jan-25			DS2940: FS				
<b>Communication System</b>													
DS3020	Submission of Communication System SCT Plan	24	01-Apr-24	29-Apr-24	24-Oct-24	20-Nov-24			EM1040: FS				
DS3030	Comment on SCT Plan/ Workshops (System Briefing & Comment Discussion)	24	30-Apr-24	29-May-24	31-Dec-24	28-Jan-25			DS3020: FS				
DS3040	Resubmission of SCT Plan for Communication System	12	30-May-24	13-Jun-24	01-Feb-25	14-Feb-25			DS3030: FS				
DS3050	Approval of SCT Plan for Communication System	24	14-Jun-24	12-Jul-24	15-Feb-25	14-Mar-25			DS3040: FS, SC1340: FF				
<b>CCTV System</b>													
DS3060	Submission of CCTV System SCT Plan	24	01-Apr-24	29-Apr-24	03-Sep-24	02-Oct-24			EM1050: FS				
DS3070	Comment on SCT Plan/ Workshops (System Briefing & Comment Discussion)	24	30-Apr-24	29-May-24	30-Oct-24	26-Nov-24			DS3060: FS				
DS3080	Resubmission of SCT Plan for CCTV System	12	30-May-24	13-Jun-24	27-Nov-24	10-Dec-24			DS3070: FS				
DS3090	Approval of SCT Plan for CCTV System	24	14-Jun-24	12-Jul-24	11-Dec-24	09-Jan-25			DS3080: FS, SC1460: FF				
<b>PABX System</b>													
DS3100	Submission of PABX System SCT Plan	24	01-Apr-24	29-Apr-24	18-Oct-24	14-Nov-24			EM1060: FS				
DS3110	Comment on SCT Plan/ Workshops (System Briefing & Comment Discussion)	24	30-Apr-24	29-May-24	28-Dec-24	25-Jan-25			DS3100: FS				
DS3120	Resubmission of SCT Plan for PABX System	12	30-May-24	13-Jun-24	27-Jan-25	12-Feb-25			DS3110: FS				
DS3130	Approval of SCT Plan for PABX System	24	14-Jun-24	12-Jul-24	13-Feb-25	12-Mar-25			DS3120: FS, SC1600: FF				
<b>ET System</b>													
DS3140	Submission of ET System SCT Plan	24	01-Apr-24	29-Apr-24	17-Sep-24	17-Oct-24			EM1070: FS				
DS3150	Comment on SCT Plan/ Workshops (System Briefing & Comment Discussion)	24	30-Apr-24	29-May-24	01-Nov-24	28-Nov-24			DS3140: FS				
DS3160	Resubmission of SCT Plan for ET System	12	30-May-24	13-Jun-24	29-Nov-24	12-Dec-24			DS3150: FS				



Activity ID	Activity Name	Original Duration	Early Start	Early Finish	Late Start	Late Finish	Actual Start	Actual Finish	Predecessor Details	2024			
										Mar 27	Apr 28	May 29	Jun 30
DS3170	Approval of SCT Plan for ET System	24	14-Jun-24	12-Jul-24	13-Dec-24	11-Jan-25			DS3160: FS, SC1730: FF				
<b>PA System</b>		84	01-Apr-24	12-Jul-24	03-Oct-24	12-Feb-25							
DS3180	Submission of PA System SCT Plan	24	01-Apr-24	29-Apr-24	03-Oct-24	31-Oct-24			EM1080: FS				
DS3190	Comment on SCT Plan/ Workshops (System Briefing & Comment Discussion)	24	30-Apr-24	29-May-24	29-Nov-24	27-Dec-24			DS3180: FS				
DS3200	Resubmission of SCT Plan for PA System	12	30-May-24	13-Jun-24	28-Dec-24	11-Jan-25			DS3190: FS				
DS3210	Approval of SCT Plan for PA System	24	14-Jun-24	12-Jul-24	13-Jan-25	12-Feb-25			DS3200: FS, SC1850: FF				
<b>Radio System</b>		84	01-Apr-24	12-Jul-24	27-Aug-24	08-Mar-25							
DS3220	Submission of Radio System SCT Plan	24	01-Apr-24	29-Apr-24	27-Aug-24	24-Sep-24			EM1090: SS 30				
DS3230	Comment on SCT Plan/ Workshops (System Briefing & Comment Discussion)	24	30-Apr-24	29-May-24	24-Dec-24	22-Jan-25			DS3220: FS				
DS3240	Resubmission of SCT Plan for Radio System	12	30-May-24	13-Jun-24	23-Jan-25	08-Feb-25			DS3230: FS				
DS3250	Approval of SCT Plan for Radio System	24	14-Jun-24	12-Jul-24	10-Feb-25	08-Mar-25			DS3240: FS, SC1980: FF				
<b>Detection System</b>		84	01-Apr-24	12-Jul-24	09-Sep-24	17-Jan-25							
DS3260	Submission of Detection System SCT Plan	24	01-Apr-24	29-Apr-24	09-Sep-24	08-Oct-24			EM1100: FS				
DS3270	Comment on SCT Plan/ Workshops (System Briefing & Comment Discussion)	24	30-Apr-24	29-May-24	07-Nov-24	04-Dec-24			DS3260: FS				
DS3280	Resubmission of SCT Plan for Detection System	12	30-May-24	13-Jun-24	05-Dec-24	18-Dec-24			DS3270: FS				
DS3290	Approval of SCT Plan for Detection System	24	14-Jun-24	12-Jul-24	19-Dec-24	17-Jan-25			DS3280: FS, SC2110: FF				
<b>Manual Fallback Control System</b>		48	08-May-24	05-Jul-24	17-Sep-24	28-Jan-25							
DS3300	Submission of Manual Fallback Control System SCT Plan	24	08-May-24	05-Jun-24	17-Sep-24	17-Oct-24			DS4790: FS				
DS3310	Comment on SCT Plan/ Workshops (System Briefing & Comment Discussion)	24	06-Jun-24	05-Jul-24	31-Dec-24	28-Jan-25			DS3300: FS				
<b>Speed Enforcement System</b>		84	01-Apr-24	12-Jul-24	30-Nov-24	22-Mar-25							
DS3380	Submission of Speed Enforcement System SCT Plan	24	01-Apr-24	29-Apr-24	30-Nov-24	28-Dec-24			EM1130: FS				
DS3390	Comment on SCT Plan/ Workshops (System Briefing & Comment Discussion)	24	30-Apr-24	29-May-24	09-Jan-25	08-Feb-25			DS3380: FS				
DS3400	Resubmission of SCT Plan for Speed Enforcement System	12	30-May-24	13-Jun-24	10-Feb-25	22-Feb-25			DS3390: FS				
DS3410	Approval of SCT Plan for Speed Enforcement System	24	14-Jun-24	12-Jul-24	24-Feb-25	22-Mar-25			DS3400: FS, SC2370: FF				
<b>Power Distribution System</b>		48	31-May-24	27-Jul-24	13-Aug-24	09-Oct-24							
DS3420	Submission of Power Distribution System SCT Plan	24	31-May-24	28-Jun-24	13-Aug-24	09-Sep-24			EM1620: FS, DS2592: FS				
DS3430	Comment on SCT Plan/ Workshops (System Briefing & Comment Discussion)	24	29-Jun-24	27-Jul-24	10-Sep-24	09-Oct-24			DS3420: FS				
<b>Government Optical Fibre System</b>		48	31-May-24	27-Jul-24	16-Jan-25	15-Mar-25							
DS3460	Submission of Government Optical Fibre System SCT Plan	24	31-May-24	28-Jun-24	16-Jan-25	15-Feb-25			EM1630: FS				
DS3470	Comment on SCT Plan/ Workshops (System Briefing & Comment Discussion)	24	29-Jun-24	27-Jul-24	17-Feb-25	15-Mar-25			DS3460: FS				
<b>SAT Plan Submissions</b>		84	16-Apr-24	26-Jul-24	18-Oct-24	13-Mar-25							
<b>Central System</b>		18	26-Jun-24	17-Jul-24	07-Jan-25	27-Jan-25							
DS3500	Submission of Central System SAT Plan	18	26-Jun-24	17-Jul-24	07-Jan-25	27-Jan-25			DS2940: FS				
<b>Communication System</b>		80	16-Apr-24	22-Jul-24	07-Nov-24	13-Feb-25							
DS3580	Submission of Communication System SAT Plan	20	16-Apr-24	09-May-24	07-Nov-24	29-Nov-24			DS3020: SS 12				
DS3590	Comment on SAT Plan/ Workshops (System Briefing & Comment Discussion)	24	10-May-24	07-Jun-24	30-Nov-24	28-Dec-24			DS3580: FS				
DS3600	Resubmission of SAT Plan for Communication System	12	08-Jun-24	22-Jun-24	30-Dec-24	13-Jan-25			DS3590: FS				
DS3610	Approval of SAT Plan for Communication System	24	24-Jun-24	22-Jul-24	14-Jan-25	13-Feb-25			DS3600: FS, SC1350: FF				
<b>CCTV System</b>		48	30-May-24	26-Jul-24	01-Nov-24	27-Dec-24							
DS3620	Submission of CCTV System SAT Plan	24	30-May-24	27-Jun-24	01-Nov-24	28-Nov-24			DS3060: FS 24				
DS3630	Comment on SAT Plan/ Workshops (System Briefing & Comment Discussion)	24	28-Jun-24	26-Jul-24	29-Nov-24	27-Dec-24			DS3620: FS				
<b>PABX System</b>		24	28-Jun-24	26-Jul-24	13-Jan-25	12-Feb-25							
DS3660	Submission of PABX System SAT Plan	24	28-Jun-24	26-Jul-24	13-Jan-25	12-Feb-25			DS3100: FS 48				
<b>ET System</b>		24	14-Jun-24	12-Jul-24	29-Nov-24	27-Dec-24							
DS3700	Submission of ET System SAT Plan	24	14-Jun-24	12-Jul-24	29-Nov-24	27-Dec-24			DS3140: FS 36				
<b>PA System</b>		24	28-Jun-24	26-Jul-24	28-Dec-24	25-Jan-25							
DS3740	Submission of PA System SAT Plan	24	28-Jun-24	26-Jul-24	28-Dec-24	25-Jan-25			DS3180: FS 48				



■ Remaining Work ◆ Milestone  
■ Actual Work  
■ Critical Activity

Date	Revision	Checked	Approved
31-Mar-24	Rev. 0	MY	

Activity ID	Activity Name	Original Duration	Early Start	Early Finish	Late Start	Late Finish	Actual Start	Actual Finish	Predecessor Details	2024			
										Mar 27	Apr 28	May 29	Jun 30
<b>Radio System</b>		24	28-Jun-24	26-Jul-24	22-Nov-24	19-Dec-24							
DS3780	Submission of Radio System SAT Plan	24	28-Jun-24	26-Jul-24	22-Nov-24	19-Dec-24			DS3220: FS 48				
<b>Manual Fallback Control System</b>		24	06-Jun-24	05-Jul-24	18-Oct-24	14-Nov-24							
DS3860	Submission of Manual Fallback Control System SAT Plan	24	06-Jun-24	05-Jul-24	18-Oct-24	14-Nov-24			DS3300: FS				
<b>Speed Enforcement System</b>		60	30-Apr-24	12-Jul-24	30-Dec-24	13-Mar-25							
DS3940	Submission of Speed Enforcement System Reliability Test Plan	24	30-Apr-24	29-May-24	30-Dec-24	27-Jan-25			DS3380: FS				
DS3950	Comment on Reliability Test Plan/ Workshops (System Briefing & Comment Discussion)	24	30-May-24	27-Jun-24	28-Jan-25	27-Feb-25			DS3940: FS				
DS3960	Resubmission of Reliability Test Plan for Speed Enforcement System	12	28-Jun-24	12-Jul-24	28-Feb-25	13-Mar-25			DS3950: FS				
<b>Training Document &amp; O&amp;M Manual Submission for T2/TKOLTT TCSS</b>		65	23-May-24	08-Aug-24	06-May-25	22-Jul-25							
DS3980	Submit Document for System Description	6	23-May-24	29-May-24	06-May-25	12-May-25			DS3580: SS 30				
DS4010	Submit System Administration Manual	11	30-May-24	12-Jun-24	13-May-25	24-May-25			DS3980: FS				
DS4020	Submit Training Manual	48	13-Jun-24	08-Aug-24	26-May-25	22-Jul-25			DS4010: FS				
<b>Site Installation and Testing &amp; Commissioning</b>		209	01-Apr-24	09-Dec-24	23-May-24	31-Oct-26							
<b>Installation &amp; Testing Related to Stage 2 of Works</b>		187	27-Apr-24	09-Dec-24	28-Jun-24	31-Oct-26							
<b>Installation</b>		187	27-Apr-24	09-Dec-24	28-Jun-24	31-Oct-26							
<b>Portion 4 - TKO-LTT (LT Interchange)</b>		78	08-May-24	09-Aug-24	28-Jun-24	16-Jan-25							
SW1930	Install Cable Containments	48	08-May-24	05-Jul-24	28-Jun-24	23-Aug-24			SW1030: FS, DS6560: FS, DS6402: FS				
SW1960	Install Equipment in Kiosk C	12	06-Jun-24	20-Jun-24	06-Nov-24	19-Nov-24			SW1050: FS, DS4340: FS, DS4440: FS				
SW1940	Install CCTV Camera	36	28-Jun-24	09-Aug-24	04-Dec-24	16-Jan-25			SW1040: SS 12, SW1930: SS 12, DS4090: FS, DS6440: FS				
<b>Portion 1 - South Apron Up to SUS</b>		66	08-May-24	26-Jul-24	03-Jul-24	17-Sep-24							
SW2000	Install Cable Containments - the 1st Section	48	08-May-24	05-Jul-24	03-Jul-24	27-Aug-24			SW1220: FS, SC2480: FF, DS6560: FS, DS6402: FS				
SW2010	Install CCTV Camera	24	28-Jun-24	26-Jul-24	21-Aug-24	17-Sep-24			SW2000: SS 42, SC1470: FF, DS4090: FS, DS6440: FS				
<b>Portion 2 - Tunnel Section, Service Gallery, WVB &amp; EVB</b>		187	27-Apr-24	09-Dec-24	09-Sep-24	31-Oct-26							
SW2080	Install Cable Containments	187	27-Apr-24	09-Dec-24	09-Sep-24	31-Oct-26			SW2300: SS, SW2400: SS, SW2510: SS, SW2600: SS, SW2720: SS				
<b>Portion 3 - CKL Branch Tunnel in TKO-LTT Site</b>		79	27-Apr-24	01-Aug-24	28-Jan-25	20-Mar-25							
SW2230	Install Cable Containments	36	27-Apr-24	11-Jun-24	07-Feb-25	20-Mar-25			SW1860: FS, SC2480: FF, DS6560: FS, DS6402: FS				
SW2220	Install CCTV Camera	29	28-Jun-24	01-Aug-24	28-Jan-25	05-Mar-25			SW1860: SS 12, SC1470: FF, DS4090: FS, DS6440: FS				
<b>Underpass S21</b>		30	27-Apr-24	03-Jun-24	26-Apr-25	03-Jun-25							
SW2260	Install Cable Containment	14	27-Apr-24	14-May-24	26-Apr-25	14-May-25			AC1040: SS, SC2480: FF, DS6560: FS, DS6402: FS				
SW2280	Laying of Leaky Cable	30	27-Apr-24	03-Jun-24	26-Apr-25	03-Jun-25			SW2260: SS				
SW2290	Laying of Power Cable From TCSS Cabinet in T2 Area	14	07-May-24	23-May-24	17-May-25	03-Jun-25			SW2260: SS 7				
SW2270	Install YAGI Antenna	7	16-May-24	23-May-24	26-May-25	03-Jun-25			SW2260: FS				
<b>Portion 4 - TKO-LTT (LT Interchange)</b>		108	01-Apr-24	09-Aug-24	23-May-24	19-Nov-24							
SW1020	Inspect Civil Provisions & Submit Inspection Report	12	01-Apr-24	15-Apr-24	23-May-24	05-Jun-24			AC1030: SS, DS6600: FS, DS6680: FS, DS6760: FS, DS6840: FS				
SW1030	Rectify Civil Provision Defects by Others	18	16-Apr-24	07-May-24	06-Jun-24	27-Jun-24			SW1020: FS				
<b>Installation Works</b>		108	01-Apr-24	09-Aug-24	28-Jun-24	19-Nov-24							
SW1040	Install Cable Containments	48	01-Apr-24	29-May-24	28-Jun-24	23-Aug-24			DS6400: FS, DS6540: FS				
SW1050	Install Equipment Racks	24	08-May-24	05-Jun-24	07-Sep-24	07-Oct-24			SW1030: FS				
SW1100	Install Server Equipment	36	06-Jun-24	19-Jul-24	08-Oct-24	19-Nov-24			SW1050: FS, DS4440: FS, DS4340: FS				
SW1120	Install Equipment in Kiosk C	12	06-Jun-24	20-Jun-24	06-Nov-24	19-Nov-24			SW1050: FS, DS4340: FS, DS4440: FS				



■ Remaining Work ◆ ◆ Milestone  
■ Actual Work  
■ Critical Activity

Date	Revision	Checked	Approved
31-Mar-24	Rev. 0	MY	

Activity ID	Activity Name	Original Duration	Early Start	Early Finish	Late Start	Late Finish	Actual Start	Actual Finish	Predecessor Details	2024			
										Mar 27	Apr 28	May 29	Jun 30
SW1060	Install CCTV Camera	36	28-Jun-24	09-Aug-24	10-Sep-24	24-Oct-24			SW1040: SS 12, SW1930: SS 12, DS4090: FS, DS6440: FS				
SW1090	Install Video Wall Equipment (Administration Building)	21	28-Jun-24	23-Jul-24	26-Oct-24	19-Nov-24			SW1040: FS 24, SW1930: SS 24, SC1330: FF, DS4440: FS, DS4340: FS, DS4440: FF				
<b>Portion 1 - South Apron Up to SUS</b>		96	01-Apr-24	26-Jul-24	27-May-24	17-Sep-24							
SW1210	Inspect Civil Provisions & Submit Inspection Report	12	01-Apr-24	15-Apr-24	27-May-24	08-Jun-24			AC1000: SS				
SW1220	Rectify Civil Provision Defects by Others	18	16-Apr-24	07-May-24	11-Jun-24	02-Jul-24			SW1210: FS				
<b>Installation Works</b>		66	08-May-24	26-Jul-24	03-Jul-24	17-Sep-24							
SW1230	Install Cable Containments - the 1st Section	48	08-May-24	05-Jul-24	03-Jul-24	27-Aug-24			SW1220: FS, SC2480: FF, DS6560: FS, DS6402: FS				
SW1240	Install CCTV Camera	24	28-Jun-24	26-Jul-24	21-Aug-24	17-Sep-24			SW1230: SS 42, SC1470: FF, DS4090: FS, DS6440: FS				
<b>Portion 2 - Tunnel Section, Service Gallery, WVB &amp; EVB</b>		82	01-Apr-24	10-Jul-24	29-Aug-24	31-Oct-26							
<b>Tunnel Section</b>		79	01-Apr-24	06-Jul-24	29-Aug-24	21-Nov-24							
<b>Tunnel Section - CH 6+568 to CH 7+100</b>		46	01-Apr-24	27-May-24	28-Sep-24	07-Nov-24							
SW2860	Inspect Civil Provisions & Submit Inspection Report	3	01-Apr-24	03-Apr-24	28-Sep-24	02-Oct-24			AC1050: SS				
SW2870	Rectify Civil Provision Defects by Others	6	05-Apr-24	11-Apr-24	03-Oct-24	09-Oct-24			SW2860: FS				
<b>Installation Works</b>		24	27-Apr-24	27-May-24	10-Oct-24	07-Nov-24							
SW2300	Install Cable Containment	24	27-Apr-24	27-May-24	10-Oct-24	07-Nov-24			SC2480: FF, SW2870: FS, DS6560: FS, DS6402: FS				
<b>Tunnel Section - CH 7+100 to CH 7+600</b>		36	13-Apr-24	27-May-24	29-Aug-24	08-Oct-24							
SW2880	Inspect Civil Provisions & Submit Inspection Report	3	13-Apr-24	16-Apr-24	29-Aug-24	31-Aug-24			AC1060: SS				
SW2890	Rectify Civil Provision Defects by Others	6	17-Apr-24	23-Apr-24	02-Sep-24	07-Sep-24			SW2880: FS				
<b>Installation Works</b>		24	27-Apr-24	27-May-24	09-Sep-24	08-Oct-24							
SW2400	Install Cable Containment	24	27-Apr-24	27-May-24	09-Sep-24	08-Oct-24			SC2480: FF, SW2890: FS, DS6560: FS, DS6402: FS				
<b>Tunnel Section - CH 7+600 to CH 8+100</b>		33	28-May-24	06-Jul-24	15-Oct-24	21-Nov-24							
SW2900	Inspect Civil Provisions & Submit Inspection Report	3	28-May-24	30-May-24	15-Oct-24	17-Oct-24			AC1070: SS				
SW2910	Rectify Civil Provision Defects by Others	6	31-May-24	06-Jun-24	18-Oct-24	24-Oct-24			SW2900: FS				
<b>Installation Works</b>		24	07-Jun-24	06-Jul-24	25-Oct-24	21-Nov-24							
SW2510	Install Cable Containment	24	07-Jun-24	06-Jul-24	25-Oct-24	21-Nov-24			SC2480: FF, EM1620: FS, SW2910: FS, DS6560: FS, DS6402: FS				
<b>West Ventilation Building</b>		82	01-Apr-24	10-Jul-24	16-Oct-24	31-Oct-26							
SW1360	Inspect Civil Provisions & Submit Inspection Report	12	01-Apr-24	15-Apr-24	24-Sep-26	09-Oct-26			AC1010: SS, KD1010: FS 359				
SW1370	Rectify Civil Provision Defects by Others	18	16-Apr-24	07-May-24	10-Oct-26	31-Oct-26			SW1360: FS				
<b>Installation Works</b>		82	01-Apr-24	10-Jul-24	16-Oct-24	20-Jan-25							
SW1650	Install Cable Containments	24	01-Apr-24	29-Apr-24	16-Oct-24	12-Nov-24			SC2480: FF, DS6400: FS, DS6540: FS				
SW1660	Position Equipment Rack	12	30-Apr-24	14-May-24	23-Nov-24	06-Dec-24			SW1650: FS				
SW1670	Install Network Equipment	36	28-May-24	10-Jul-24	07-Dec-24	20-Jan-25			SW1660: FS, SC1330: FF, DS4340: FS, DS4440: FS				
<b>East Ventilation Building</b>		82	01-Apr-24	10-Jul-24	16-Oct-24	31-Oct-26							
SW2960	Inspect Civil Provisions & Submit Inspection Report	12	01-Apr-24	15-Apr-24	24-Sep-26	09-Oct-26			AC1010: SS, KD1010: FS				
SW2970	Rectify Civil Provision Defects by Others	18	16-Apr-24	07-May-24	10-Oct-26	31-Oct-26			SW2960: FS				
<b>Installation Works</b>		82	01-Apr-24	10-Jul-24	16-Oct-24	20-Jan-25							
SW1750	Install Cable Containments	24	01-Apr-24	29-Apr-24	16-Oct-24	12-Nov-24			SC2480: FF, DS6400: FS, DS6540: FS				
SW1760	Position Equipment Rack	12	30-Apr-24	14-May-24	23-Nov-24	06-Dec-24			SW1750: FS				
SW1770	Install Network Equipment	36	28-May-24	10-Jul-24	07-Dec-24	20-Jan-25			SW1760: FS, SC1330: FF, DS4340: FS, DS4440: FS				
<b>Portion 3 - CKL Branch Tunnel in TKO-LTT Site</b>		101	01-Apr-24	01-Aug-24	04-Jan-25	14-Mar-25							
SW1850	Inspect Civil Provisions & Submit Inspection Report	3	01-Apr-24	03-Apr-24	04-Jan-25	07-Jan-25			AC1020: SS				
SW1860	Rectify Civil Provision Defects by Others	7	05-Apr-24	12-Apr-24	08-Jan-25	15-Jan-25			SW1850: FS				
<b>Installation Works</b>		79	27-Apr-24	01-Aug-24	16-Jan-25	14-Mar-25							



■ Remaining Work ◆ Milestone  
■ Actual Work  
■ Critical Activity

Date	Revision	Checked	Approved
31-Mar-24	Rev. 0	MY	



Activity ID	Activity Name	Original Duration	Early Start	Early Finish	Late Start	Late Finish	Actual Start	Actual Finish	Predecessor Details	2024			
										Mar 27	Apr 28	May 29	Jun 30
SW1890	Install Cable Containments	36	27-Apr-24	11-Jun-24	01-Feb-25	14-Mar-25			SW1860: FS, SC2480: FF, DS6560: FS, DS6402: FS				
SW1870	Install CCTV Camera	29	28-Jun-24	01-Aug-24	16-Jan-25	21-Feb-25			SW1860: FS, SC1470: FF, DS4090: FS, DS6440: FS				

